

P. L. 94-171 COUNTY BLOCK MAP (CENSUS 2000)

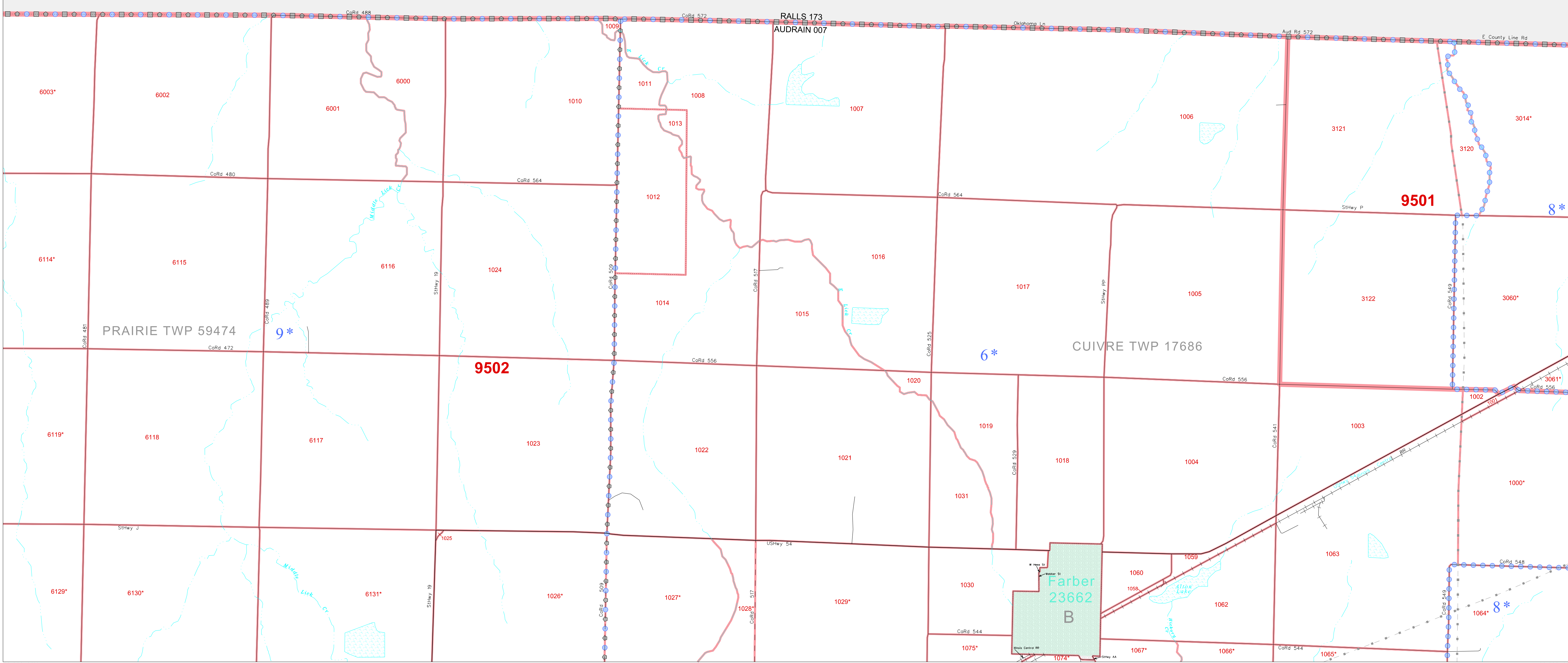
39 402466N
91 091181W

39 402466N
91 091181W

GEOGRAPHIC AREAS LEGEND

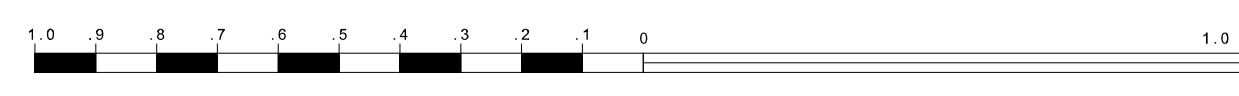
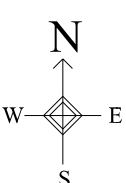
SYMBOL	NAME STYLE
*****	INTERNATIONAL
//////	STATE
■■■■■	COUNTY
□□□□□	MINOR CIVIL DIV. ¹
■■■■■	Incorporated Place ²
■■■■■	Census Designated Place ²
-----	Corporate Offset Boundary
●●●●●	Voting District ³
■■■■■	Census Tract
■■■■■	BLOCK ³
■	Military
■	Inset
■	Out Area

1 A "*" following a place name indicates that the place is coterminous with a MCD. A "-" indicates that the place is also a false MCD. In both cases, the MCD name is shown only when it differs from the place name.
 2 A "*" following a VTD code indicates an actual voting district. Its absence indicates that the VTD is a pseudo voting district or no information is available as to its status.
 3 A "*" following a block number indicates that the block number is repeated elsewhere in the block.



39 269766N
91 091181W

39 269766N
91 091181W



The plotted map scale is 1:20000

Sheet Location within County



Key to Adjacent Sheets

4	5	6
10	11	12

ST: Missouri (29)
 COU: Audrain (007)
 SHEET 5 OF 16 PARENT SHEETS