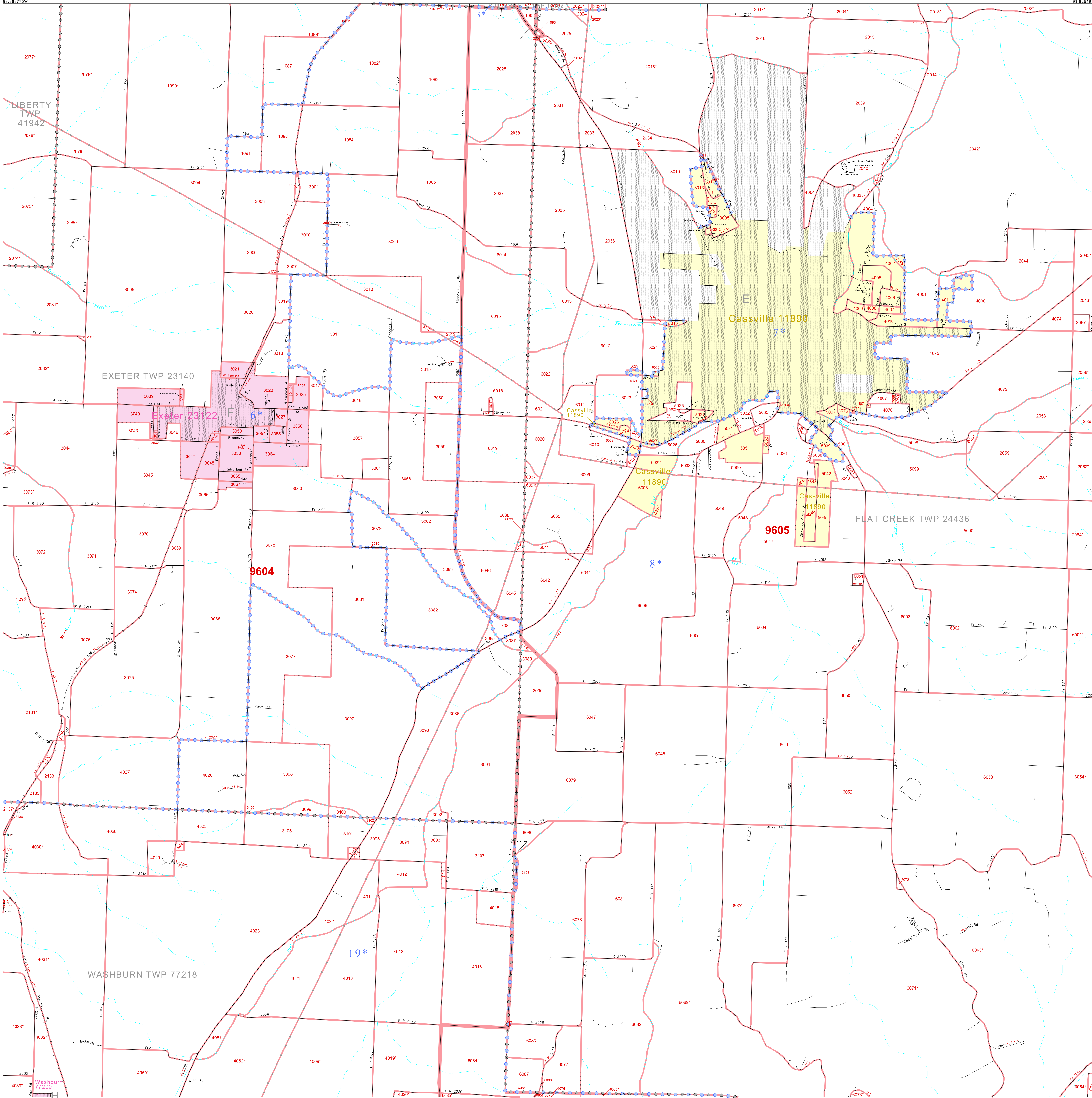


P. L. 94-171 COUNTY BLOCK MAP (CENSUS 2000)

36 715250N  
93.969775W

36 715250N  
93.924977W



GEOGRAPHIC AREAS LEGEND

SYMBOL	NAME STYLE
*****	INTERNATIONAL
//////	STATE
■■■■■	COUNTY
□□□□□	MINOR CIVIL DIV. <sup>1</sup>
■	Incorporated Place <sup>2</sup>
■	Census Designated Place <sup>2</sup>
.....	Corporate Offset Boundary
.....	Voting District <sup>3</sup>
■	Census Tract
■	BLOCK <sup>3</sup>

1 A "\*" following a place name indicates that the place is coterminous with a MCD. A "-" indicates that the place is also a false MCD. In both cases, the MCD name is shown only when it differs from the place name.

2 A "\*" following a VTD code indicates an actual voting district. Its absence indicates that the VTD is a pseudo voting district or no information is available as to its status.

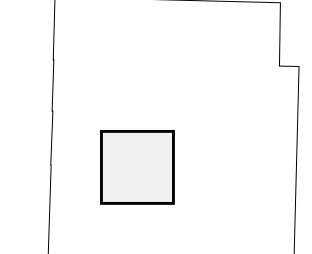
3 A "\*" following a block number indicates that the block number is repeated elsewhere in the block.

Military Inset Out Area



The plotted map scale is 1:17500

Sheet Location within County



Key to Adjacent Sheets

5	6	7
9	10	11
13	14	15

ST: Missouri (29)  
COU: Barry (009)  
SHEET 10 OF 16 PARENT SHEETS

