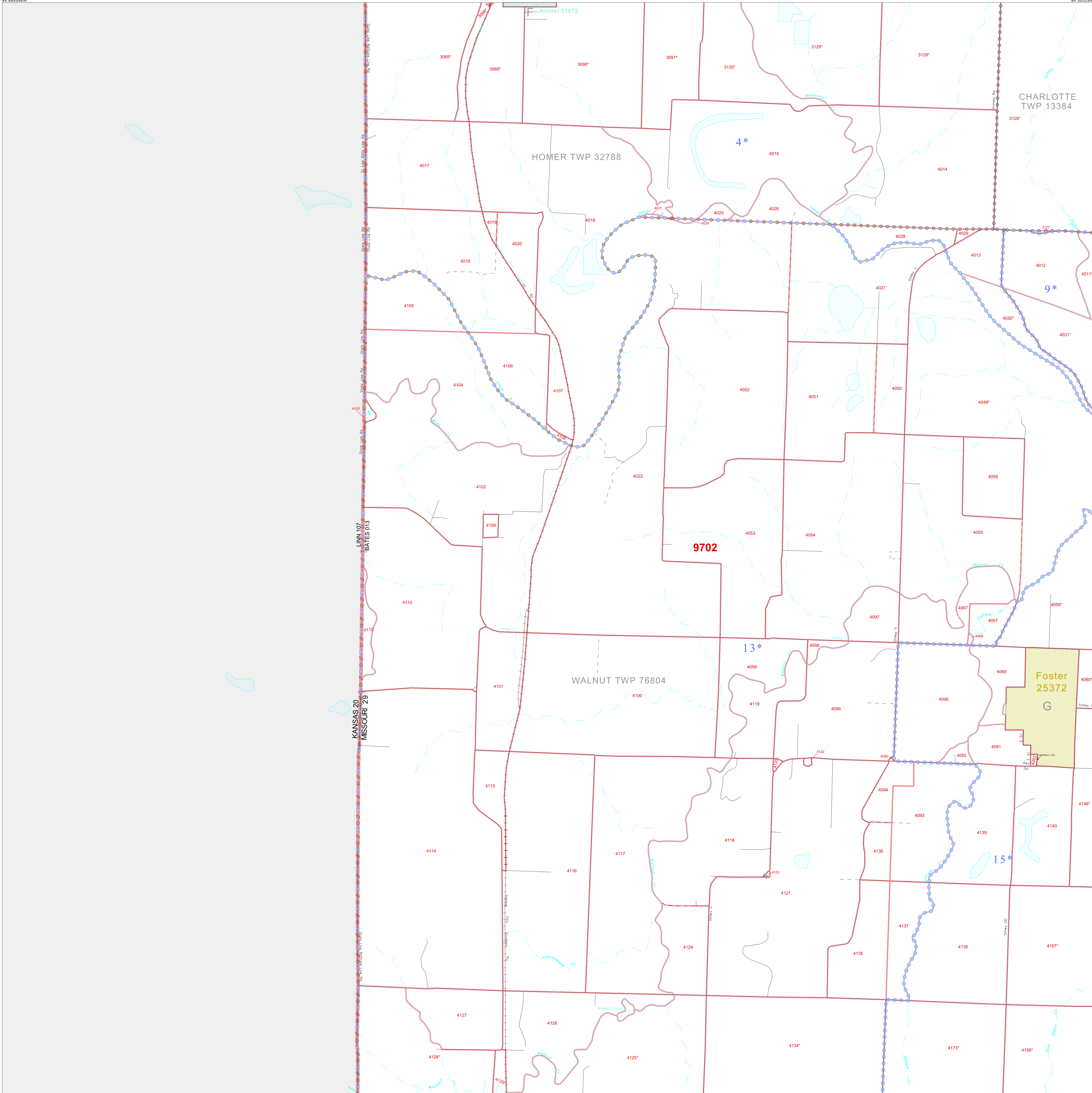


P. L. 94-171 COUNTY BLOCK MAP (CENSUS 2000)

38 251880N
94.668990W

38 251880N
94.668990W



GEOGRAPHIC AREAS LEGEND

SYMBOL	NAME STYLE
*****	INTERNATIONAL
//////	STATE
□□□□□	COUNTY
○●○●○	MINOR CIVIL DIV. ¹
Yellow box	Incorporated Place ¹
Light Green box	Census Designated Place ¹
.....	Corporate Offset Boundary
.....	Voting District ²
Red line	Census Tract
Red line	BLOCK ³

1 A "*" following a place name indicates that the place is coterminous with a MCD. A "-" indicates that the place is also a false MCD. In both cases, the MCD name is shown only when it differs from the place name.

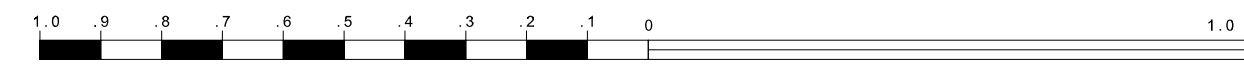
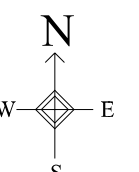
2 A "*" following a VTD code indicates an actual voting district. Its absence indicates that the VTD is a pseudo voting district or no information is available as to its status.

3 A "*" following a block number indicates that the block number is repeated elsewhere in the block.

Inset Out Area

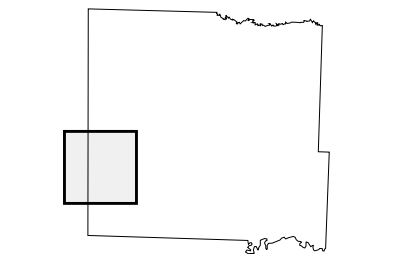
38.119158N
94.668990W

38.119158N
94.668990W



The plotted map scale is 1:20000

Sheet Location within County



Key to Adjacent Sheets

5	6
9	10
13	14

ST: Missouri (29)
COU: Bates (013)
SHEET 9 OF 16 PARENT SHEETS

All legal boundaries and names are as of January 1, 2000. The boundaries shown on this map are for Census Bureau statistical data collection and tabulation purposes only; their depiction and designation for statistical purposes does not constitute a determination of jurisdictional authority or rights of ownership or entitlement. U.S. DEPARTMENT OF COMMERCE Economics and Statistics Administration U.S. Census Bureau