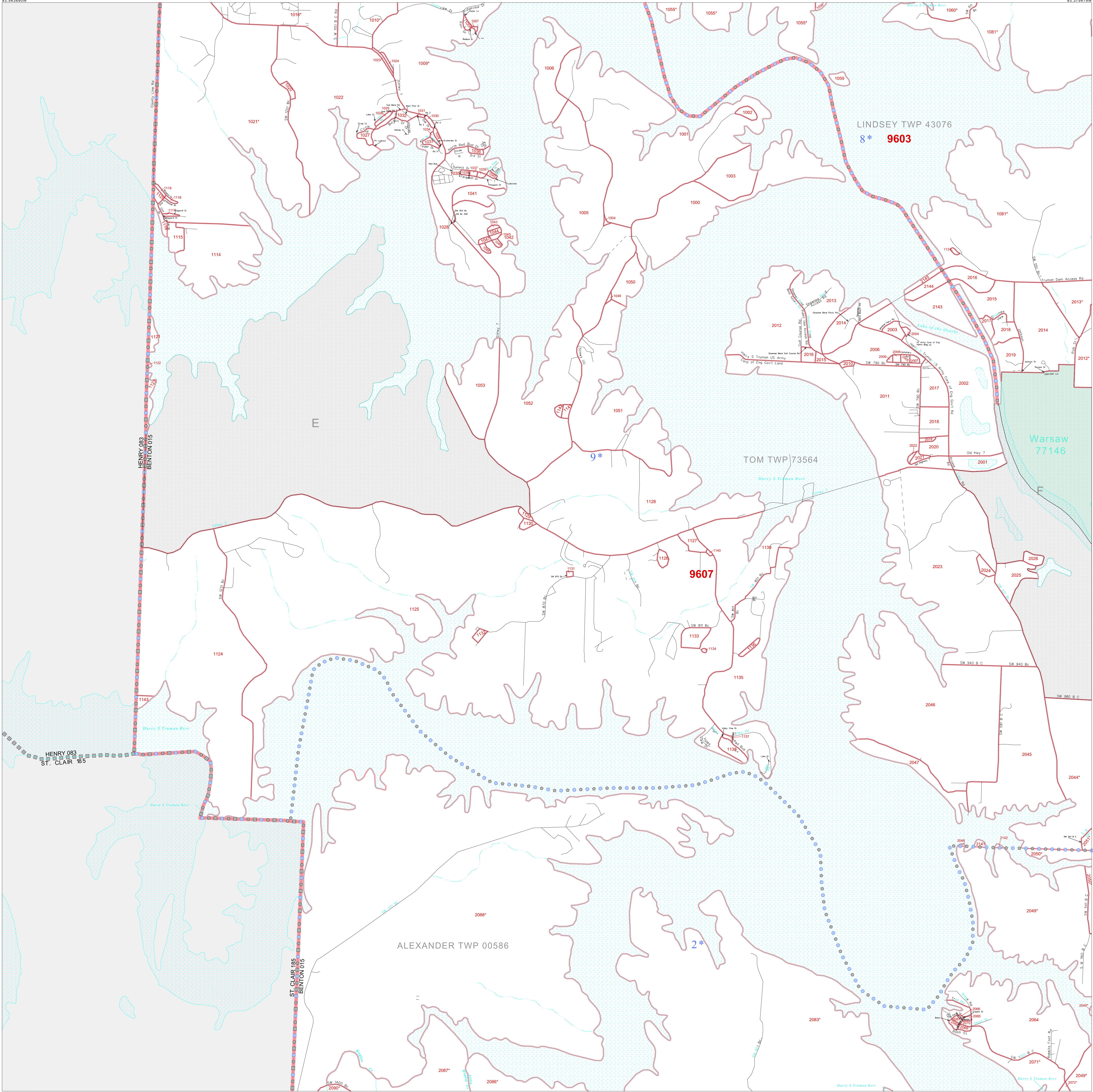


P. L. 94-171 COUNTY BLOCK MAP (CENSUS 2000)

38 298955N  
93.543890W

38 298955N  
93.375479W



GEOGRAPHIC AREAS LEGEND

SYMBOL	NAME STYLE
*****	INTERNATIONAL
//////	STATE
■■■■■	COUNTY
□□□□□	MINOR CIVIL DIV.
Yellow box	Incorporated Place
Pink box	Census Designated Place
.....	Corporate Offset Boundary
.....	Voting District
Red outline	Census Tract
Red outline	BLOCK

1 A "\*" following a place name indicates that the place is coterminous with a MCD. A "-" indicates that the place is also a false MCD. In both cases, the MCD name is shown only when it differs from the place name.

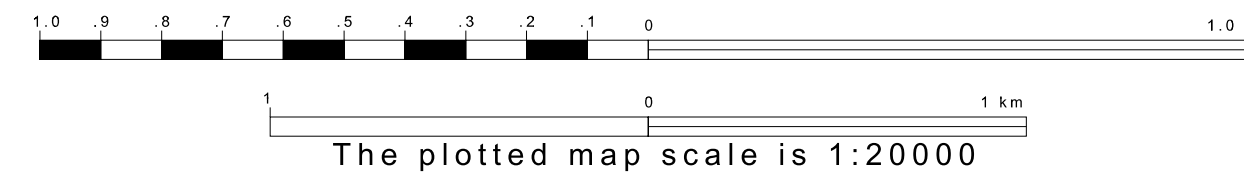
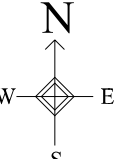
2 A "\*" following a VTD code indicates an actual voting district. Its absence indicates that the VTD is a pseudo voting district or no information is available as to its status.

3 A "-" following a block number indicates that the block number is repeated elsewhere in the block.

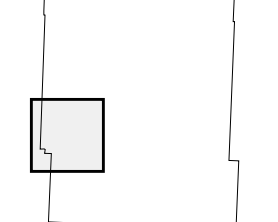
Military Inset Out Area

38 166234N  
93.543890W

38 166234N  
93.375479W



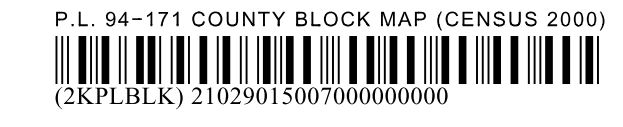
Sheet Location within County



Key to Adjacent Sheets

4	5
7	8
10	11

ST: Missouri (29)  
COU: Benton (015)  
SHEET 7 OF 12 PARENT SHEETS



All legal boundaries and names are as of January 1, 2000. The boundaries shown on this map are for Census Bureau statistical data collection and tabulation purposes only; their depiction and designation for statistical purposes does not constitute a determination of jurisdictional authority or rights of ownership or entitlement. U.S. DEPARTMENT OF COMMERCE Economics and Statistics Administration U.S. Census Bureau