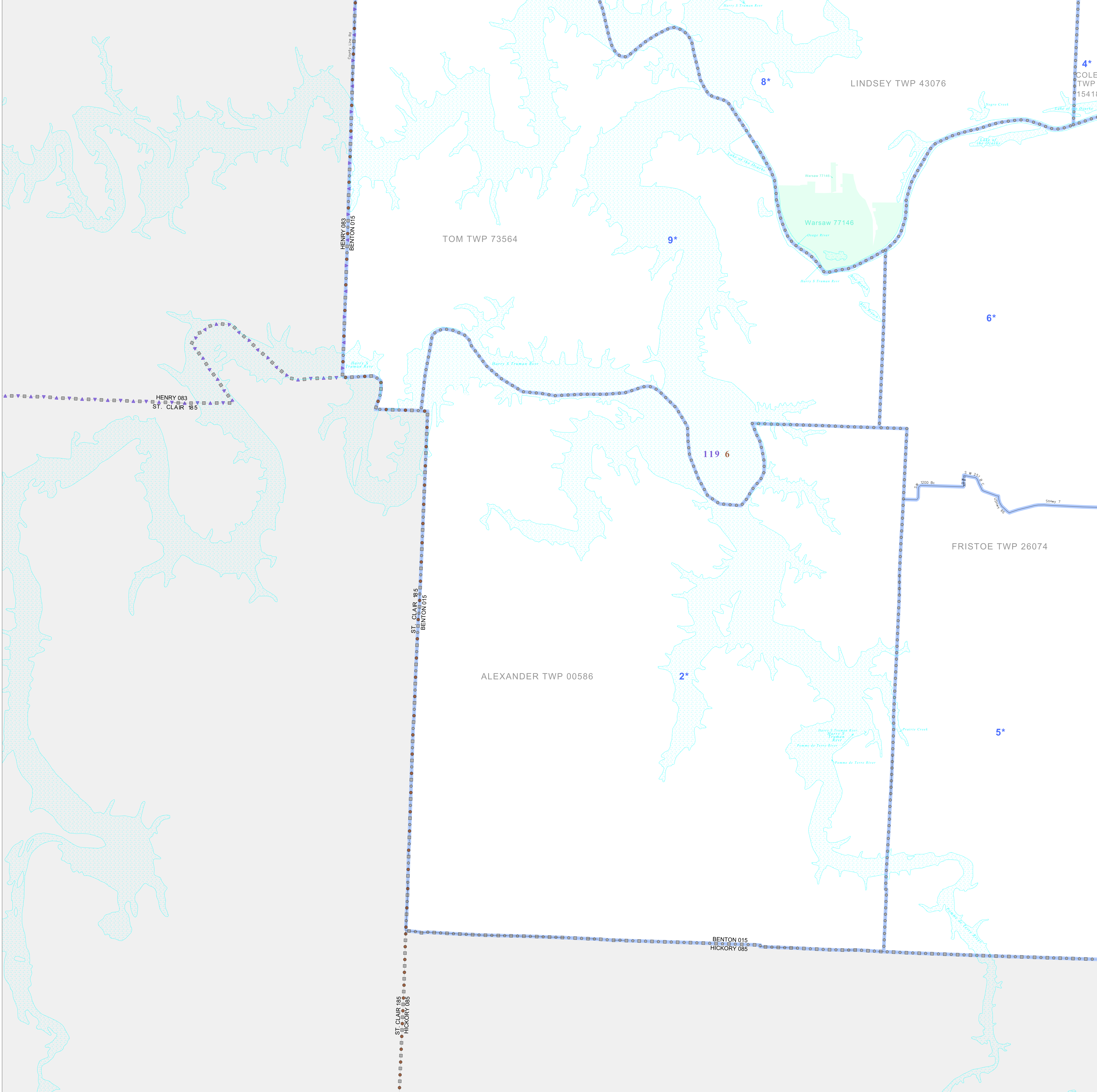


P.L. 94-171 VOTING DISTRICT/STATE LEGISLATIVE DISTRICT OUTLINE MAP (CENSUS 2000)

38 298955N
93 628094W

38 298955N
93 291273W



GEOGRAPHIC AREAS LEGEND

SYMBOL	NAME STYLE
*****	INTERNATIONAL
//////	STATE
□□□□	COUNTY
□□□□	MINOR CIVIL DIV ¹
■ ■ ■ ■	Incorporated Place ¹
■ ■ ■ ■	Census Designated Place ²
—	Voting District
● ● ● ●	SLD—Senate
▲ ▲ ▲ ▲	SLD—House
□ □ □ □	Military
□ □ □ □	Inset
□ □ □ □	Out Area

Abbreviation Reference: AIR = American Indian Reservation; SDAISA = State Designated American Indian Statistical Area

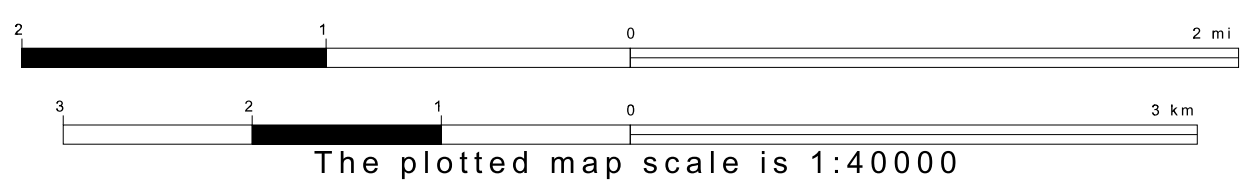
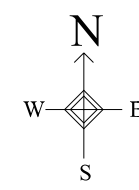
¹ A "*" following a place name indicates that the place is coterminous with a MCD. A "-" indicates that the place is also a false MCD. In both cases, the MCD name is shown only when it differs from the place name.
² A "*" following a VTD code indicates an actual voting district. Its absence indicates that the VTD is a pseudo voting district or no information is available as to its status.

Voting Districts

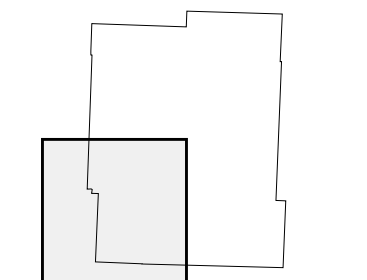
Code	Name
1*	Alexander Voting District
2*	Cole's Voting District
3*	Fristoe's 15 Voting District
4*	Fristoe's 9 Voting District
5*	Lindsey's 5 Voting District
6*	Town Voting District

38 033514N
93 628094W

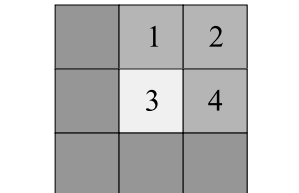
38 033514N
93 291273W



Sheet Location within County



Key to Adjacent Sheets



ST: Missouri (29)
 COU: Benton (015)
 SHEET 3 OF 4 PARENT SHEETS

