

P. L. 94-171 COUNTY BLOCK MAP (CENSUS 2000)

38 201438N  
92 901336W

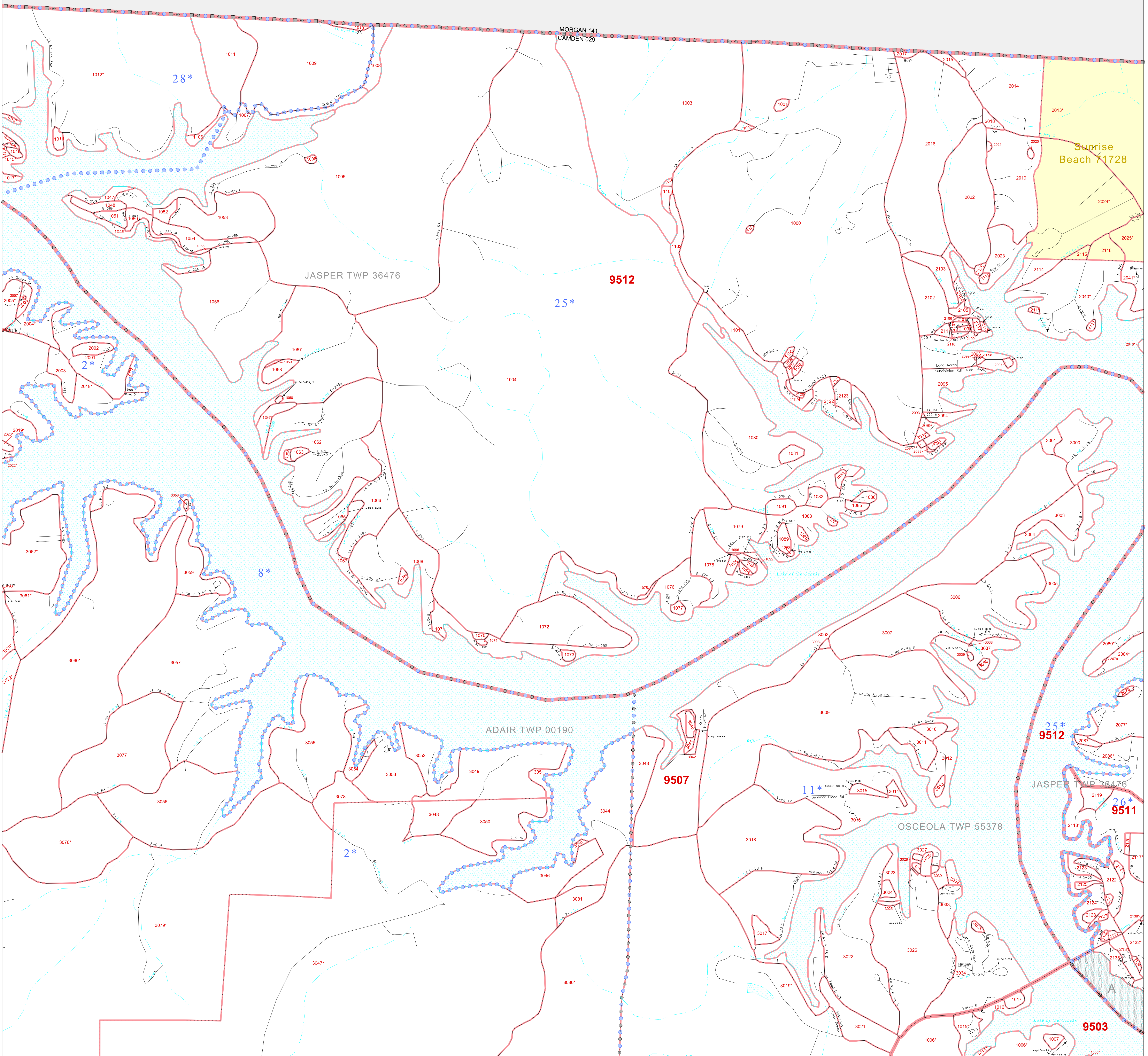
38 201438N  
92 796581W

GEOGRAPHIC AREAS LEGEND

SYMBOL	NAME STYLE
*****	INTERNATIONAL
//////	STATE
■■■■■	COUNTY
□□□□□	MINOR CIVIL DIV. <sup>1</sup>
■	Incorporated Place <sup>2</sup>
■	Census Designated Place <sup>2</sup>
.....	Corporate Offset Boundary
.....	Voting District <sup>3</sup>
—	Census Tract
—	BLOCK <sup>3</sup>

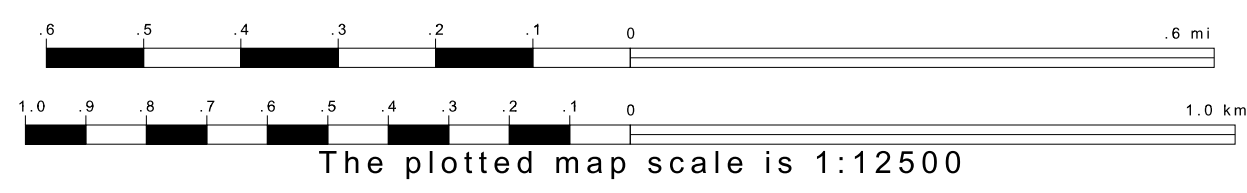
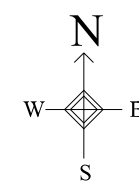
1 A "\*" following a place name indicates that the place is coterminous with a MCD. A "-" indicates that the place is also a false MCD. In both cases, the MCD name is shown only when it differs from the place name.  
2 A "\*" following a VTD code indicates an actual voting district. Its absence indicates that the VTD is a pseudo voting district or no information is available as to its status.  
3 A "\*" following a block number indicates that the block number is repeated elsewhere in the block.

Military Inset Out Area

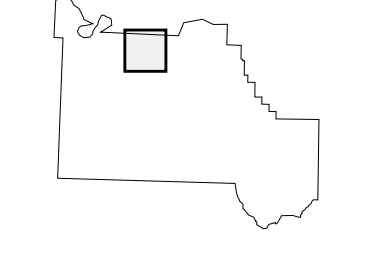


38 118482N  
92 901336W

38 118482N  
92 796581W



Sheet Location within County



Key to Adjacent Sheets

2	3
6	7
11	12
13	

ST: Missouri (29)  
COU: Camden (029)  
SHEET 7 OF 32 PARENT SHEETS

