

P.L. 94-171 COUNTY BLOCK MAP (CENSUS 2000)

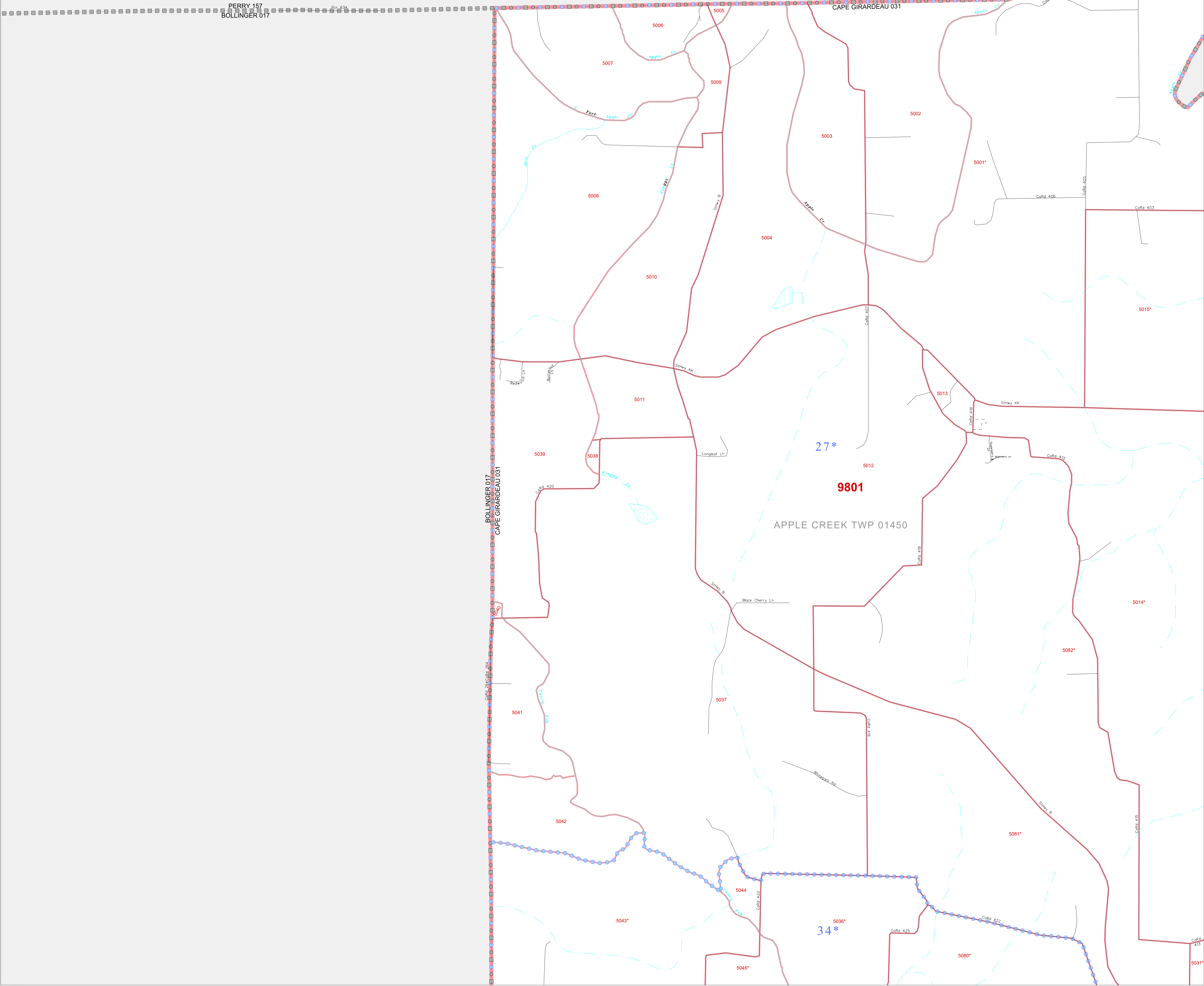
37 615058N
89 903790W

37 615058N
89 799850W

GEOGRAPHIC AREAS LEGEND

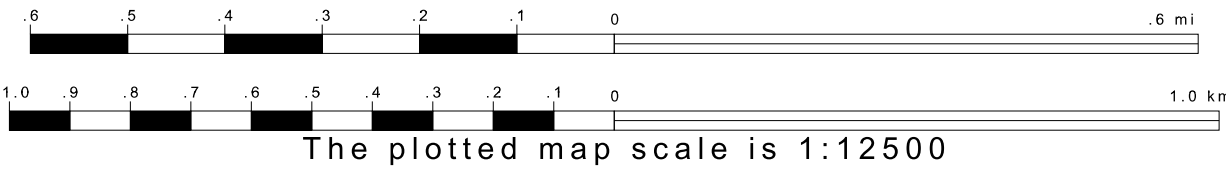
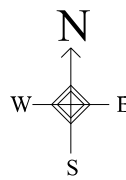
SYMBOL	NAME STYLE
*****	INTERNATIONAL
//////	STATE
	COUNTY
●●●●●	MINOR CIVIL DIV ¹
 	Incorporated Place ¹
 	Census Designated Place ¹
-----	Corporate Offset Boundary
●●●●●	Voting District ²
 	Census Tract
 	BLOCK ³
 	Military
 	Inset
 	Out Area

- 1 A "*" following a place name indicates that the place is coterminous with a MCD. A "-" indicates that the place is also a false MCD. In both cases, the MCD name is shown only when it differs from the place name.
- 2 A "*" following a VTD code indicates an actual voting district. Its absence indicates that the VTD is a pseudo voting district or no information is available as to its status.
- 3 A "-" following a block number indicates that the block number is repeated elsewhere in the block.

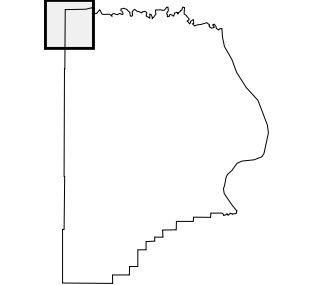


37 532095N
89 903790W

37 532095N
89 799850W



Sheet Location within County



Key to Adjacent Sheets

	1	2
	5	6

ST: Missouri (29)
COU: Cape Girardeau (031)
SHEET 1 OF 26 PARENT SHEETS

