

P.L. 94-171 VOTING DISTRICT/STATE LEGISLATIVE DISTRICT OUTLINE MAP (CENSUS 2000)

37 346167N  
89 893339W

37 386167N  
89 727092W

GEOGRAPHIC AREAS LEGEND

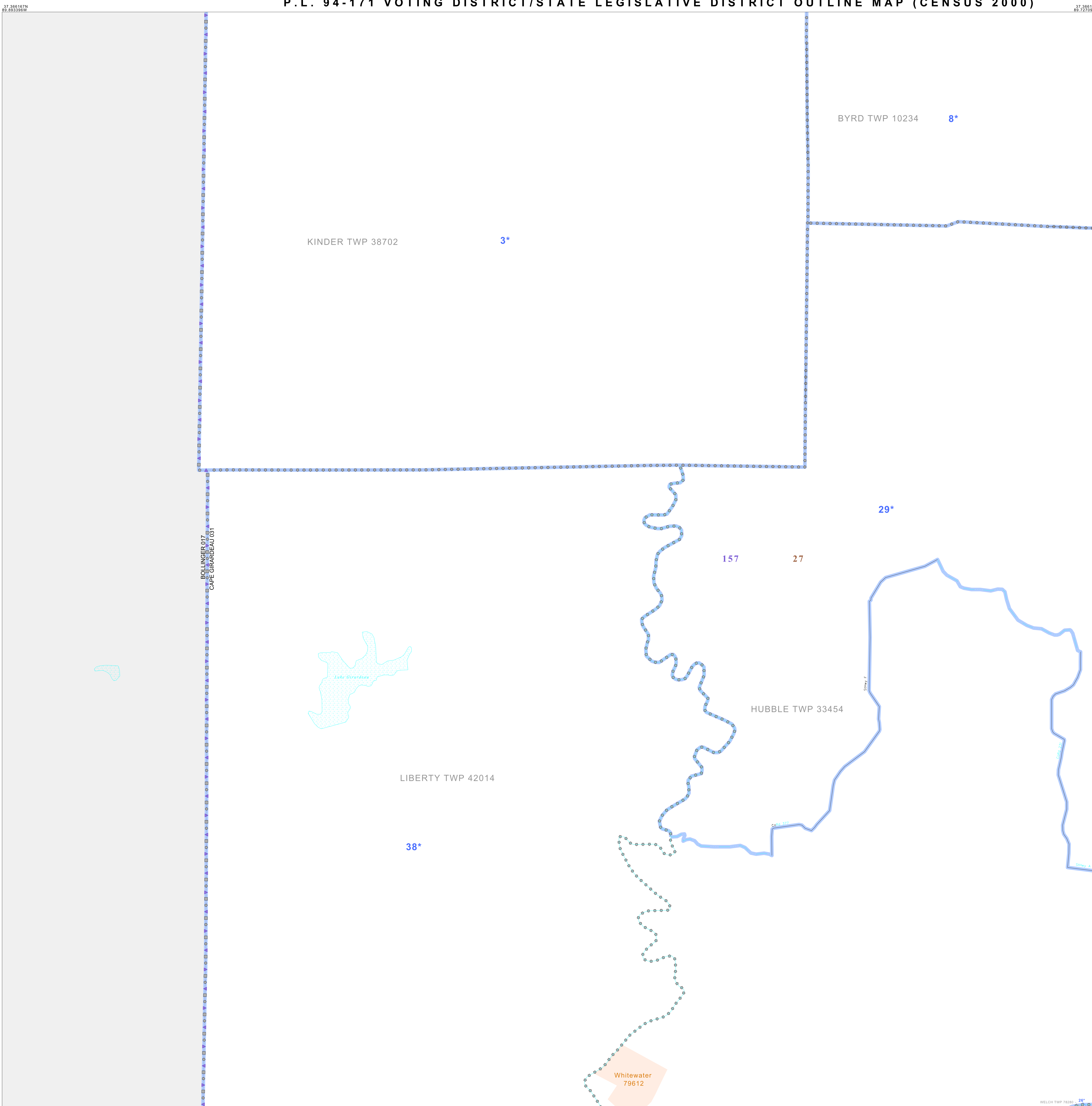
SYMBOL	NAME STYLE
*****	INTERNATIONAL
//////	STATE
□□□□□□	COUNTY
○●○●○●	MINOR CIVIL DIV. <sup>1</sup>
■	Incorporated Place <sup>1</sup>
■	Census Designated Place <sup>2</sup>
—	Voting District
●●●●●●	SLD-Senate
▲▲▲▲▲▲	SLD-House

Abbreviation Reference: AIR - American Indian Reservation; SDAISA - State Designated American Indian Statistical Area

<sup>1</sup> A " " following a place name indicates that the place is coterminous with a MCD. A " " indicates that the place is also a false MCD. In both cases, the MCD name is shown only when it differs from the place name.  
<sup>2</sup> A " " following a VTD code indicates an actual voting district. Its absence indicates that the VTD is a pseudo voting district or no information is available as to its status.

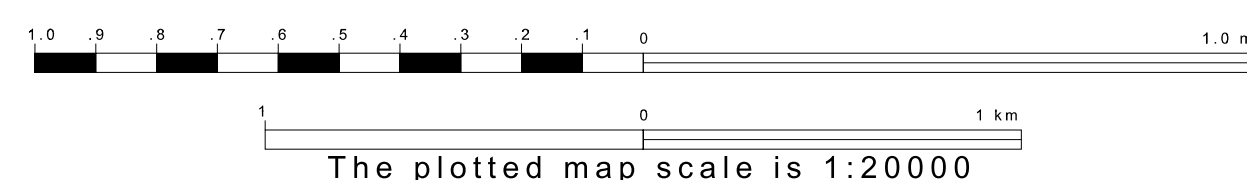
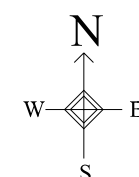
Voting Districts

Code	Name
3*	Berfordville Voting District
8*	Byrd's S&S Voting District
29*	Della Voting District
27*	Gordonville Voting District
38*	Whitewater Voting District

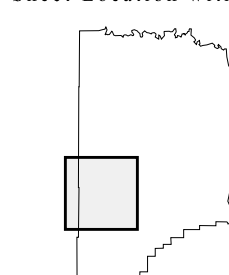


37 233425N  
89 893339W

37 233425N  
89 727092W



Sheet Location within County



Key to Adjacent Sheets

4	5
7	8
10	11

ST: Missouri (29)  
 COU: Cape Girardeau (031)  
 SHEET 7 OF 11 PARENT SHEETS

