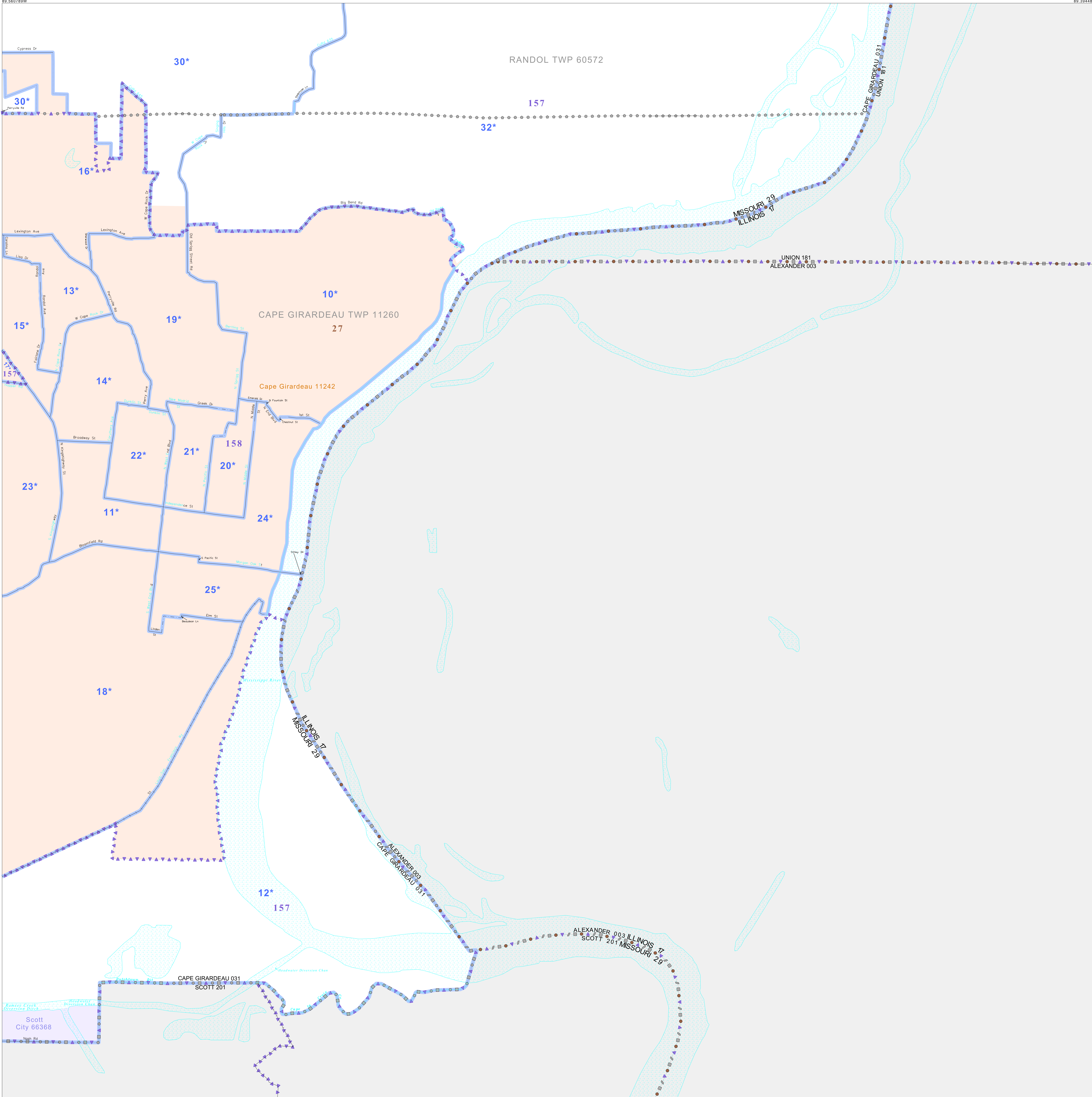


P.L. 94-171 VOTING DISTRICT/STATE LEGISLATIVE DISTRICT OUTLINE MAP (CENSUS 2000)

37 366167N
89 560789W

37 366167N
89 394480W



GEOGRAPHIC AREAS LEGEND

SYMBOL	NAME STYLE
*****	INTERNATIONAL
-----	STATE
=====	COUNTY
-----	MINOR CIVIL DIV ¹
-----	Incorporated Place ¹
-----	Census Designated Place ²
-----	Voting District
-----	SLD-Senate
-----	SLD-House
-----	Minority
-----	Inset
-----	Out Area

Abbreviation Reference: AIR - American Indian Reservation; SDAISA - State Designated American Indian Statistical Area

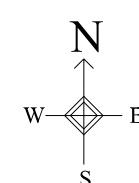
¹ A "*" following a place name indicates that the place is coterminous with a MCD. A "-" indicates that the place is also a false MCD. In both cases, the MCD name is shown only when it differs from the place name.
² A "*" following a VTD code indicates an actual voting district. Its absence indicates that the VTD is a pseudo voting district or no information is available as to its status.

Voting Districts

Code	Name
10*	CapeGirardeauPrecinct1
11*	CapeGirardeauPrecinct11
12*	CapeGirardeauPrecinct12
13*	CapeGirardeauPrecinct13
14*	CapeGirardeauPrecinct14
15*	CapeGirardeauPrecinct15
16*	CapeGirardeauPrecinct16
17*	CapeGirardeauPrecinct17
18*	CapeGirardeauPrecinct18
19*	CapeGirardeauPrecinct19
20*	CapeGirardeauPrecinct20
21*	CapeGirardeauPrecinct21
22*	CapeGirardeauPrecinct22
23*	CapeGirardeauPrecinct23
24*	CapeGirardeauPrecinct24
25*	CapeGirardeauPrecinct25
26*	CapeGirardeauPrecinct26
27*	Illinois Precinct
28*	Illinois Precinct
29*	Illinois Precinct
30*	Illinois Precinct
31*	Illinois Precinct
32*	Illinois Precinct
33*	WellHolcomb Voting District

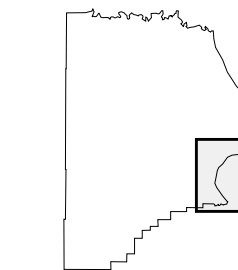
37 233425N
89 560789W

37 233425N
89 394480W



The plotted map scale is 1:20000

Sheet Location within County



Key to Adjacent Sheets

5	6
8	9
11	

ST: Missouri (29)
 COU: Cape Girardeau (031)
 SHEET 9 OF 11 PARENT SHEETS

