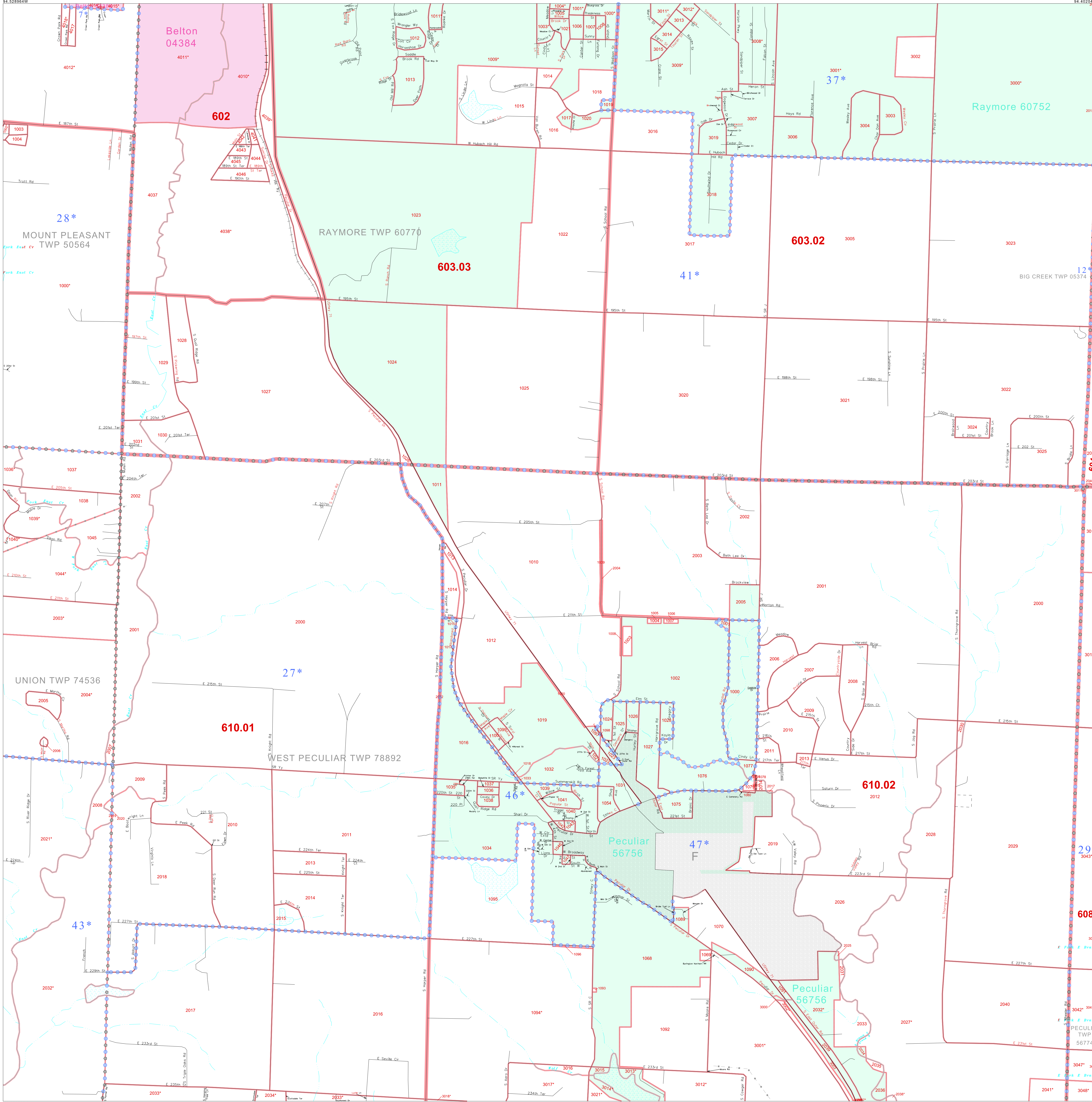


P.L. 94-171 COUNTY BLOCK MAP (CENSUS 2000)

38 795540N  
94.528964W

38 795540N  
94.402949W



**GEOGRAPHIC AREAS LEGEND**

SYMBOL	NAME STYLE
*****	INTERNATIONAL
//////	STATE
■■■■■	COUNTY
●●●●●	MINOR CIVIL DIV. <sup>1</sup>
Yellow box	Incorporated Place <sup>1</sup>
Pink box	Census Designated Place <sup>1</sup>
Red dashed line	Corporate Offset Boundary
Blue dashed line	Voting District <sup>2</sup>
Red solid line	Census Tract
Blue dashed line	BLOCK <sup>3</sup>
Blue dashed line	Military

Inset    Out Area

<sup>1</sup> A "\*" following a place name indicates that the place is coterminous with a MCD. A "-" indicates that the place is also a false MCD. In both cases, the MCD name is shown only when it differs from the place name.

<sup>2</sup> A "\*" following a VTD code indicates an actual voting district. Its absence indicates that the VTD is a pseudo voting district or no information is available as to its status.

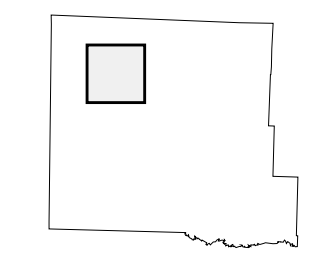
<sup>3</sup> A "\*" following a block number indicates that the block number is repeated elsewhere in the block.

38 696008N  
94.528964W

38 696008N  
94.402949W



Sheet Location within County



Key to Adjacent Sheets

1	2	3
6	7	8
11	12	13

ST: Missouri (29)  
COU: Cass (037)  
SHEET 7 OF 25 PARENT SHEETS

All legal boundaries and names are as of January 1, 2000. The boundaries shown on this map are for Census Bureau statistical data collection and tabulation purposes only; their depiction and designation for statistical purposes does not constitute a determination of jurisdictional authority or rights of ownership or entitlement. U.S. DEPARTMENT OF COMMERCE Economics and Statistics Administration U.S. Census Bureau