

P. L. 94-171 COUNTY BLOCK MAP (CENSUS 2000)

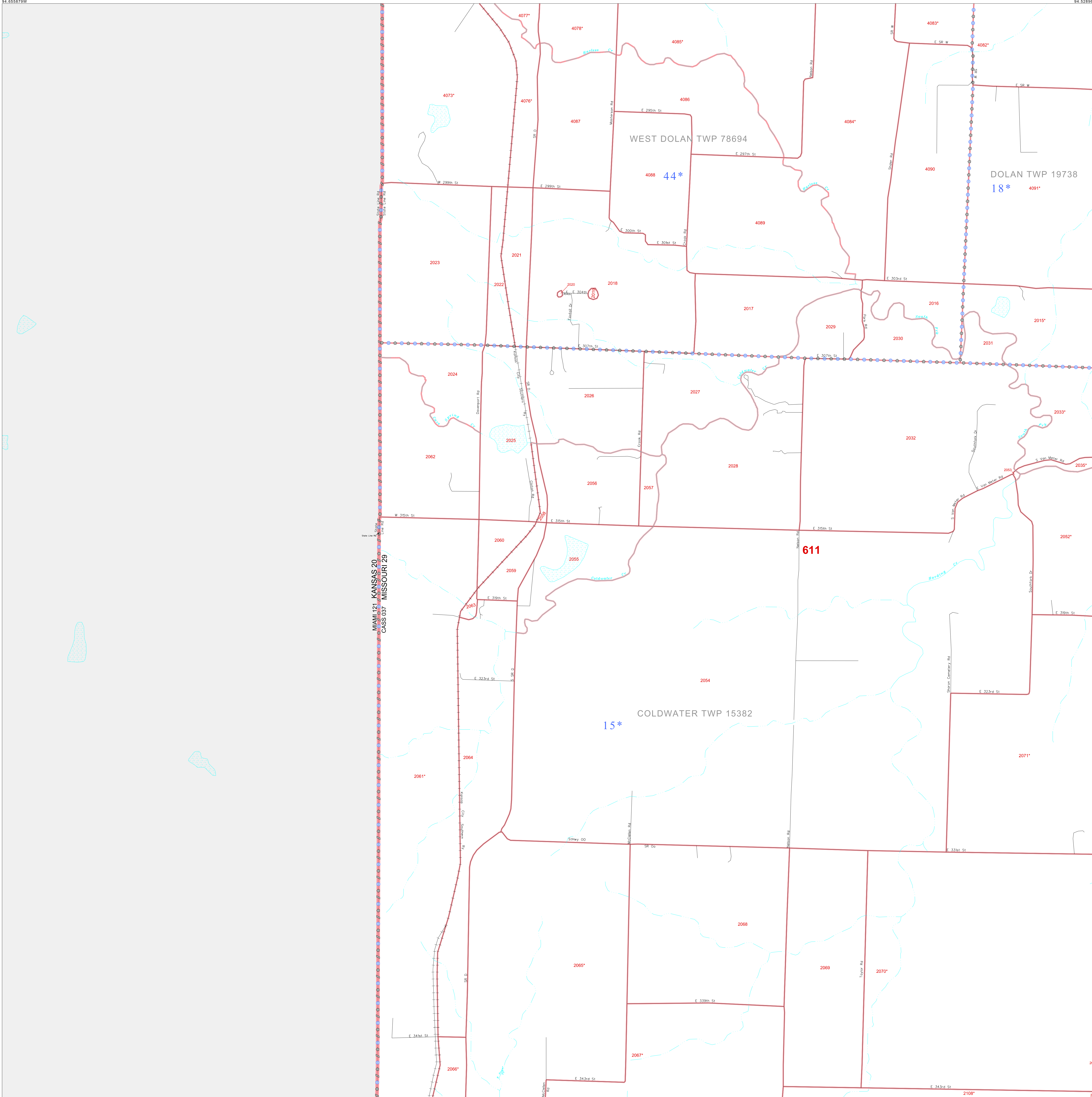
38.596471N  
94.655879W

38.596471N  
94.655879W

GEOGRAPHIC AREAS LEGEND

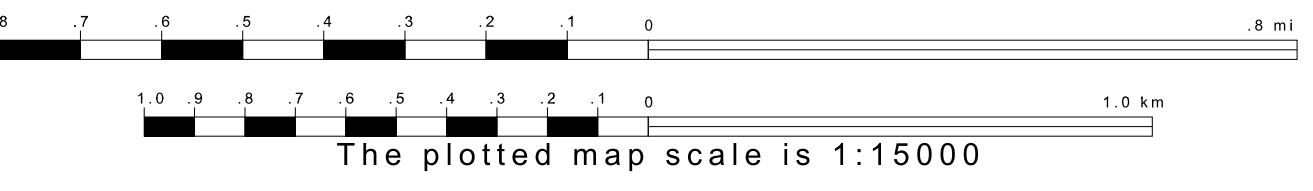
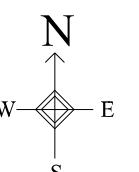
SYMBOL	NAME STYLE
☆☆☆☆	INTERNATIONAL
//////	STATE
□□□□	COUNTY
□□□□	MINOR CIVIL DIV <sup>1</sup>
■ ■ ■ ■	Incorporated Place <sup>2</sup>
■ ■ ■ ■	Census Designated Place <sup>2</sup>
.....	Corporate Offset Boundary
●●●●	Voting District <sup>3</sup>
—	Census Tract
—	BLOCK <sup>3</sup>
■ ■ ■ ■	Military
Inset	Out Area

1 A "\*" following a place name indicates that the place is coterminous with a MCD. "A\*" indicates that the place is also a false MCD. In both cases, the MCD name is shown only when it differs from the place name.  
 2 A "\*" following a VTD code indicates an actual voting district. Its absence indicates that the VTD is a pseudo voting district or no information is available as to its status.  
 3 A "\*" following a block number indicates that the block number is repeated elsewhere in the block.

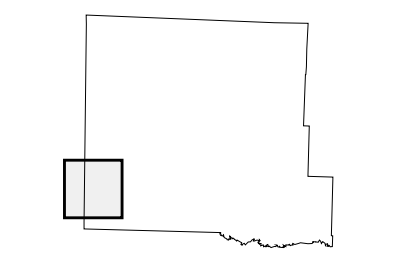


38.496336N  
94.655879W

38.496336N  
94.655879W



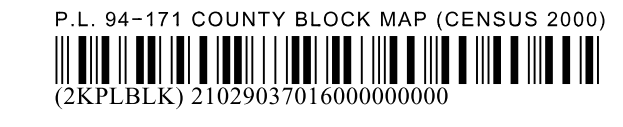
Sheet Location within County



Key to Adjacent Sheets

11	12
16	17
21	22

ST: Missouri (29)  
 COU: Cass (037)  
 SHEET 16 OF 25 PARENT SHEETS



All legal boundaries and names are as of January 1, 2000. The boundaries shown on this map are for Census Bureau statistical data collection and tabulation purposes only; their depiction and designation for statistical purposes does not constitute a determination of jurisdictional authority or rights of ownership or entitlement. U.S. DEPARTMENT OF COMMERCE Economics and Statistics Administration U.S. Census Bureau