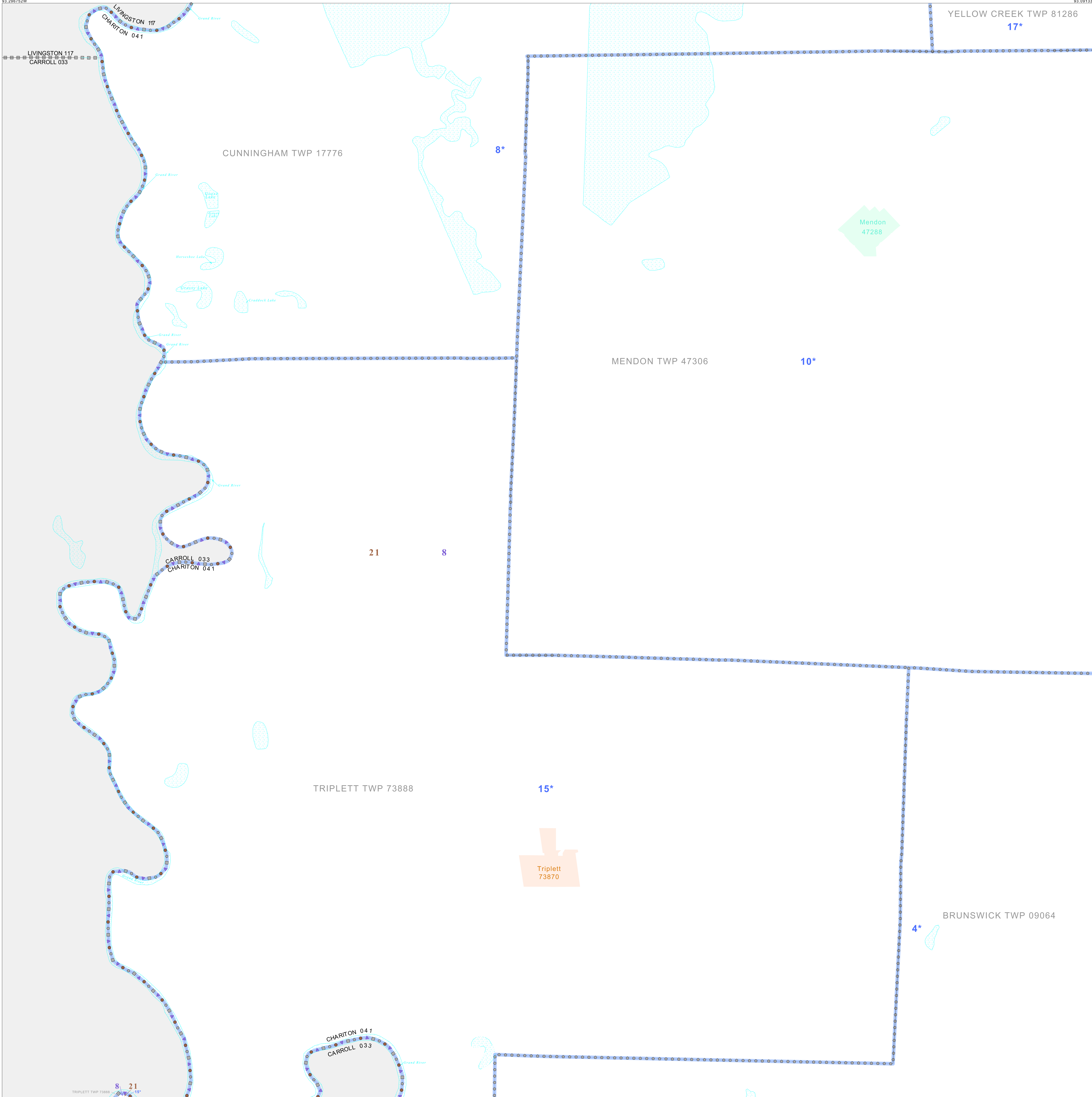


P.L. 94-171 VOTING DISTRICT/STATE LEGISLATIVE DISTRICT OUTLINE MAP (CENSUS 2000)

39 464328N  
93 290752W

39 464328N  
93 290752W



**GEOGRAPHIC AREAS LEGEND**

SYMBOL	NAME STYLE
*****	INTERNATIONAL
=====	STATE
=====	COUNTY
=====	MINOR CIVIL DIV. <sup>1</sup>
=====	Incorporated Place <sup>1</sup>
=====	Census Designated Place <sup>1</sup>
=====	Voting District <sup>2</sup>
=====	SLD-Senate
=====	SLD-House

Abbreviation Reference: AIR - American Indian Reservation; SDAISA - State Designated American Indian Statistical Area

1 A "\*" following a place name indicates that the place is coextensive with a MCD. A "-" indicates that the place is also a false MCD. In both cases, the MCD name is shown only when it differs from the place name.

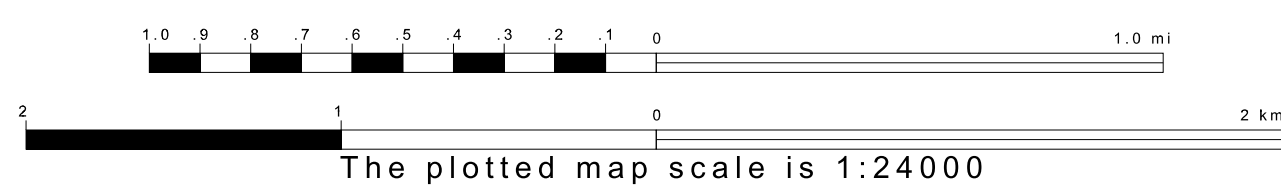
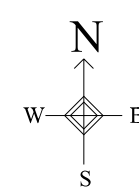
2 A "\*" following a VTD code indicates an actual voting district. Its absence indicates that the VTD is a pseudo voting district or no information is available as to its status.

**Voting Districts**

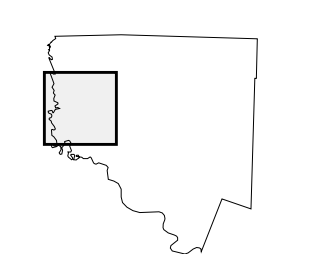
Code	Name
4*	Brunswick Voting District
8*	Cunningham Voting District
10*	Mendon Voting District
15*	Triplet Voting District
17*	YellowCreek Voting District

39 464328N  
93 290752W

39 464328N  
93 290752W



Sheet Location within County



Key to Adjacent Sheets

1	2
4	5
7	8

ST: Missouri (29)  
COU: Chariton (041)  
SHEET 4 OF 11 PARENT SHEETS

