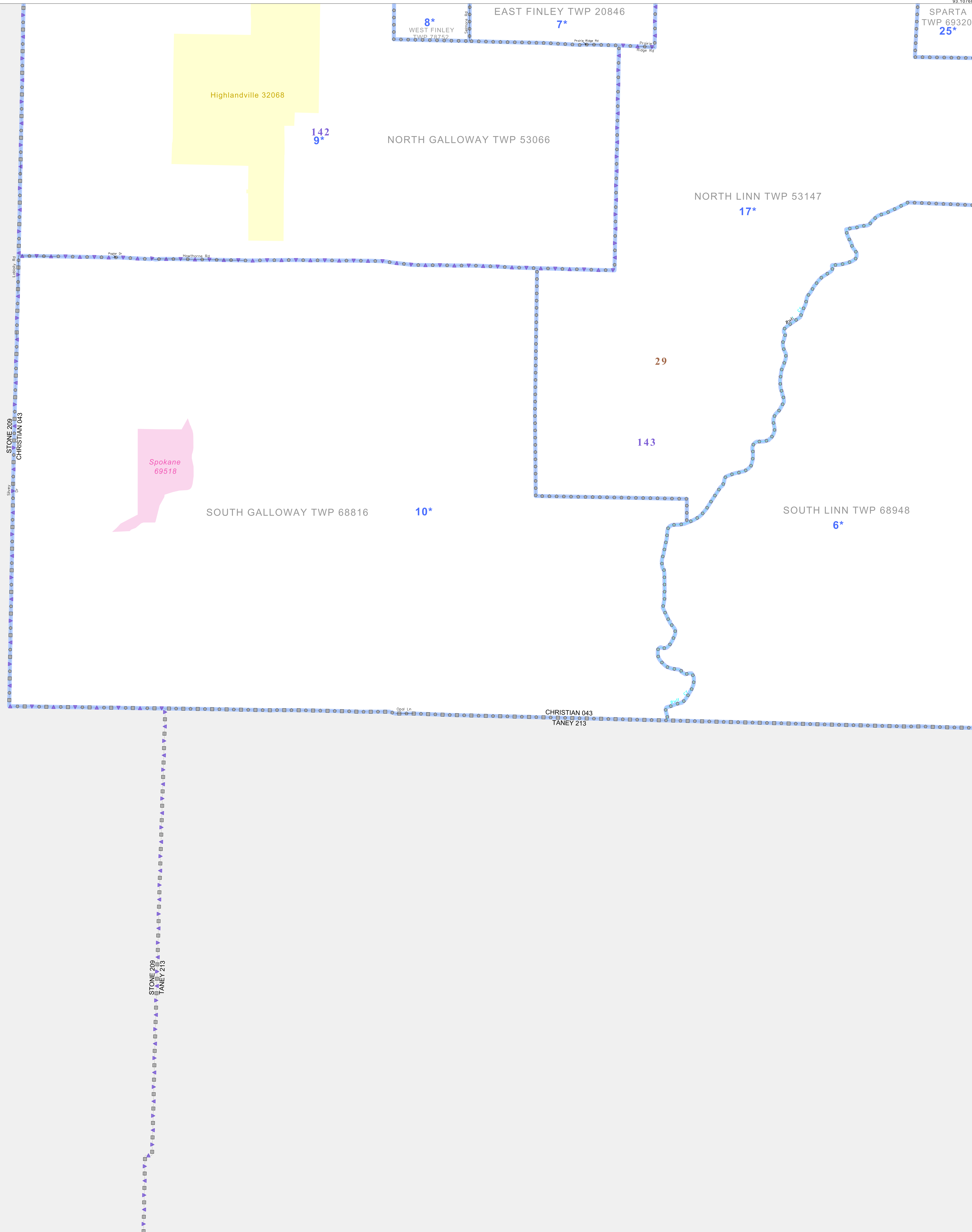


P.L. 94-171 VOTING DISTRICT/STATE LEGISLATIVE DISTRICT OUTLINE MAP (CENSUS 2000)

36 953786N
93 405409W

36 953786N
93 107685W



GEOGRAPHIC AREAS LEGEND

SYMBOL	NAME STYLE
*****	INTERNATIONAL
//////	STATE
□□□□	COUNTY
○ ○ ○ ○ ○	MINOR CIVIL DIV ¹
■ ■ ■ ■ ■	Incorporated Place ¹
■ ■ ■ ■ ■	Census Designated Place ²
— — — — —	Voting District
● ● ● ● ●	SLD—Senate
▲ ▲ ▲ ▲ ▲	SLD—House

Abbreviation Reference: AIR = American Indian Reservation; SDAISA = State Designated American Indian Statistical Area

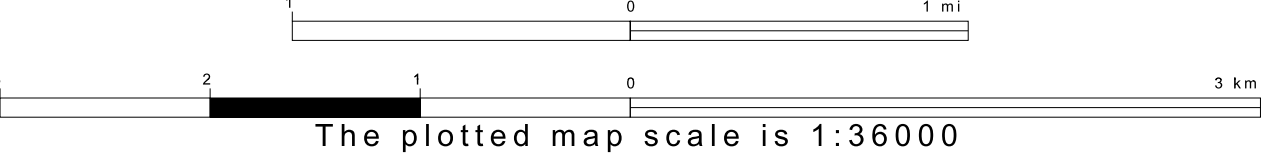
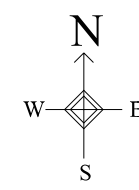
¹ A "*" following a place name indicates that the place is coterminous with a MCD. A "-" indicates that the place is also a MCD. In both cases, the MCD name is shown only when it differs from the place name.
² A "*" following a VTD code indicates an actual voting district. Its absence indicates that the VTD is a pseudo voting district or no information is available as to its status.

Voting Districts

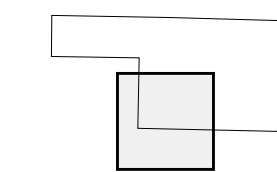
Code	Name
6*	Chadwick Voting District
7*	FolleyEast Voting District
8*	FolleyWest Voting District
9*	GallowayNorth Voting District
10*	GallowaySouth Voting District
17*	NorthLinn Voting District
29*	Sparta Voting District

36 714834N
93 405409W

36 714834N
93 107685W



Sheet Location within County



Key to Adjacent Sheets

1	2	3
4	5	

ST: Missouri (29)
 COU: Christian (043)
 SHEET 4 OF 5 PARENT SHEETS

