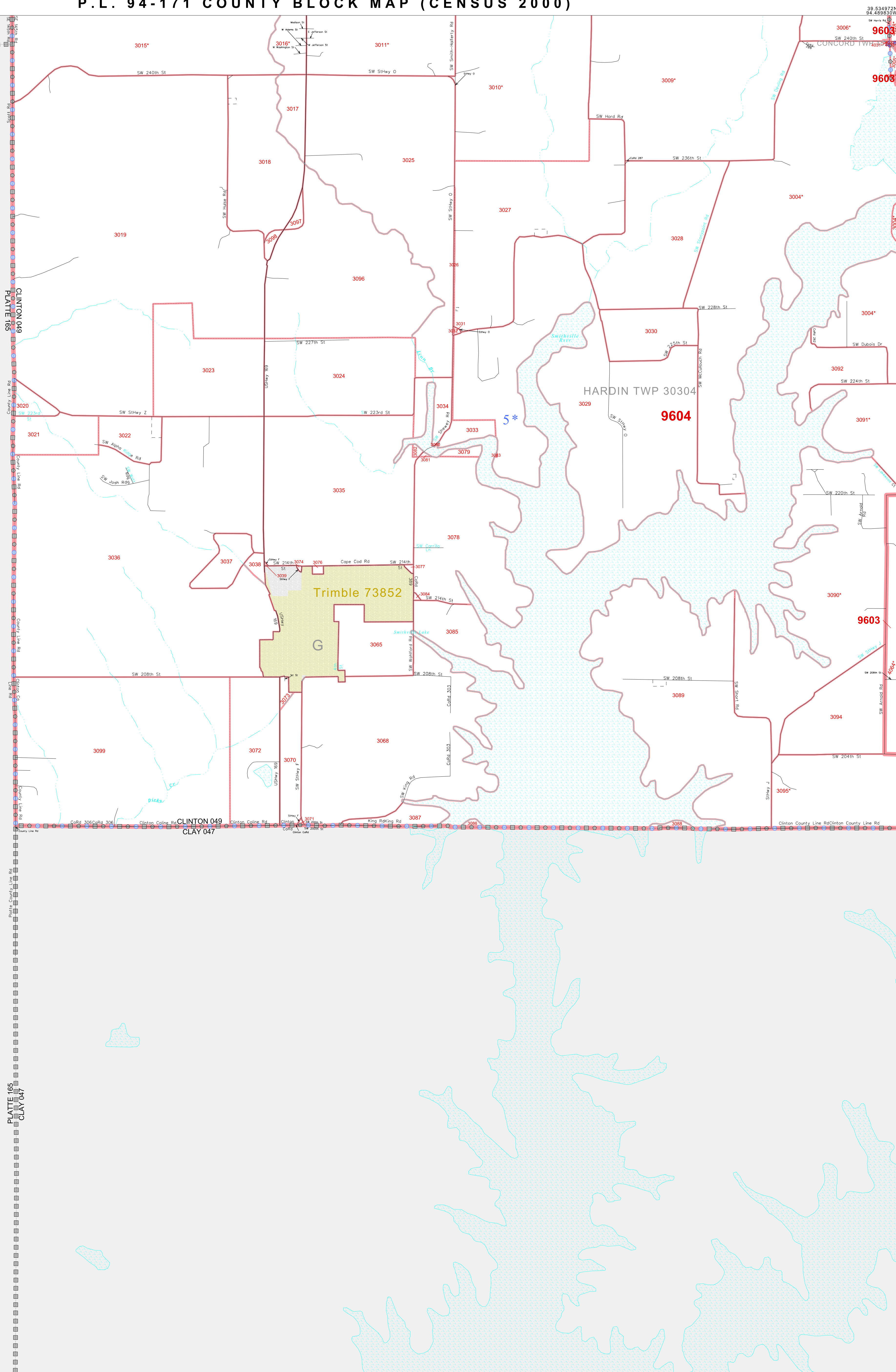


P.L. 94-171 COUNTY BLOCK MAP (CENSUS 2000)

39 534972N
94 661351W

39 534972N
94 661351W

BUCHANAN 021
PLATTE 165



GEOGRAPHIC AREAS LEGEND

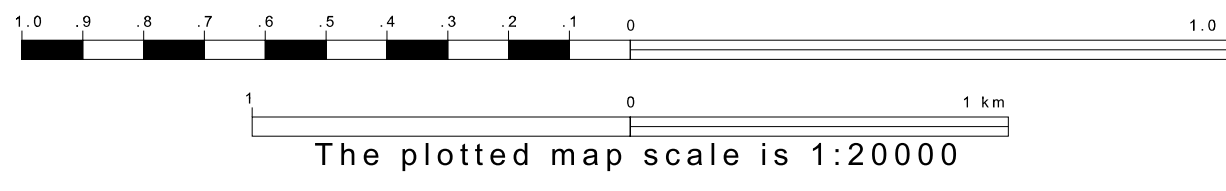
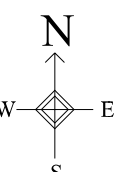
SYMBOL	NAME STYLE
☆☆☆☆	INTERNATIONAL
//////	STATE
□□□□	COUNTY
□□□□□□	MINOR CIVIL DIV ¹
Yellow shaded area	Incorporated Place ¹
Light green shaded area	Census Designated Place ¹
Dashed line	Corporate Offset Boundary
Blue dashed line	Voting District ²
Red line	Census Tract
Red line with 'A' marker	BLOCK ³

1 A "*" following a place name indicates that the place is coterminous with a MCD. "A" indicates that the place is also a false MCD. In both cases, the MCD name is shown only when it differs from the place name.
 2 A "*" following a VTD code indicates an actual voting district. Its absence indicates that the VTD is a pseudo voting district or no information is available as to its status.
 3 "A" following a block number indicates that the block number is repeated elsewhere in the block.

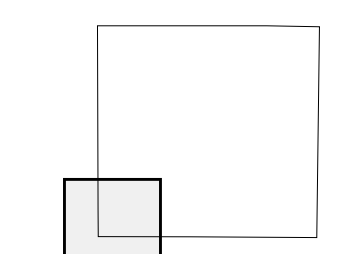
Military Inset Out Area

39 402282N
94 661351W

39 402282N
94 661351W



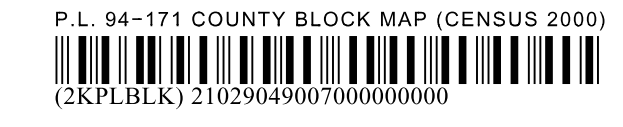
Sheet Location within County



Key to Adjacent Sheets

4	5
7	8

ST: Missouri (29)
 COU: Clinton (049)
 SHEET 7 OF 9 PARENT SHEETS



All legal boundaries and names are as of January 1, 2000. The boundaries shown on this map are for Census Bureau statistical data collection and tabulation purposes only; their depiction and designation for statistical purposes does not constitute a determination of jurisdictional authority or rights of ownership or entitlement. U.S. DEPARTMENT OF COMMERCE Economics and Statistics Administration U.S. Census Bureau