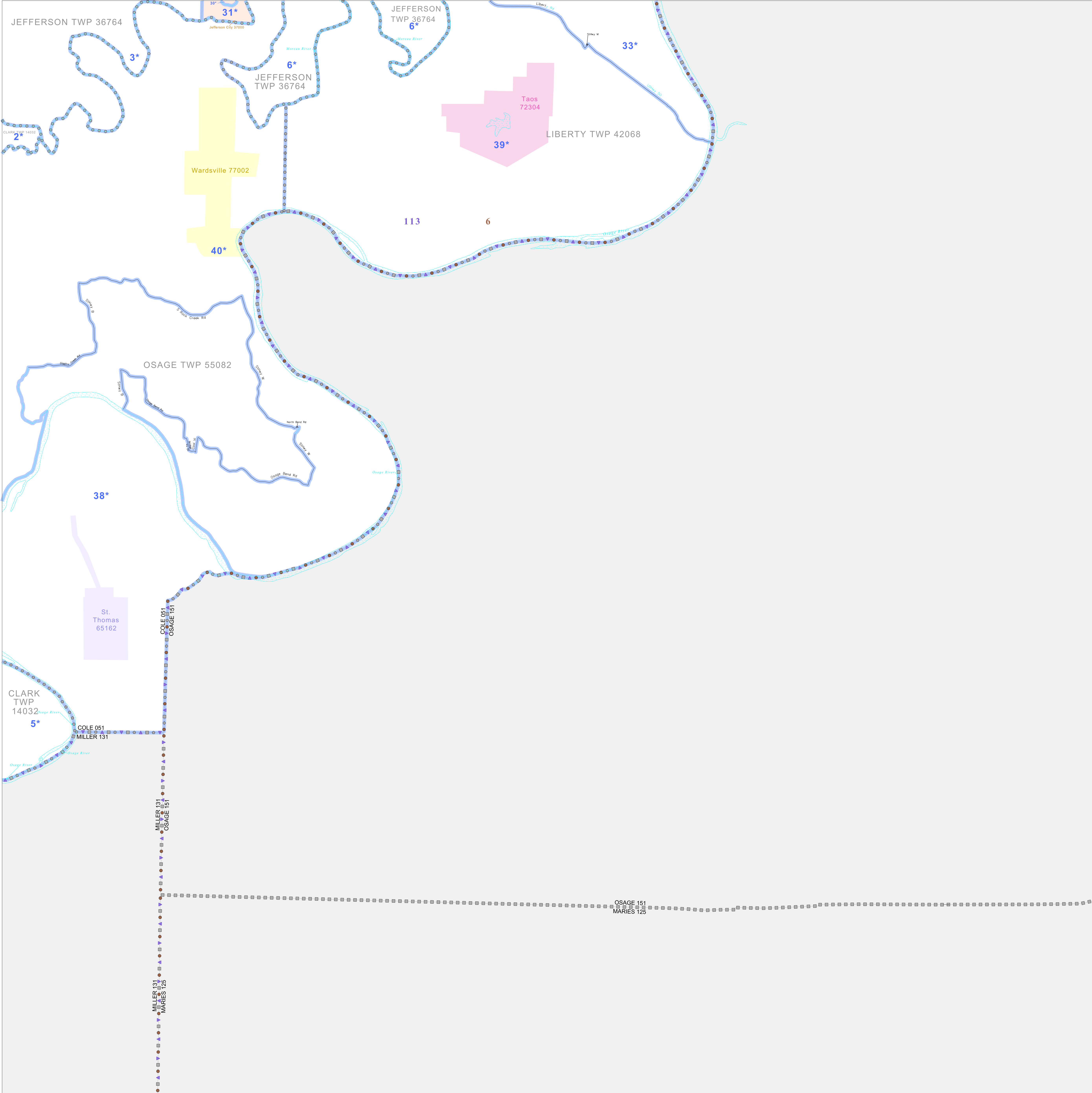


P.L. 94-171 VOTING DISTRICT/STATE LEGISLATIVE DISTRICT OUTLINE MAP (CENSUS 2000)

38 530922N  
92 249342W

38 530922N  
91 877653W



GEOGRAPHIC AREAS LEGEND

SYMBOL	NAME STYLE
*****	INTERNATIONAL
//////	STATE
□□□□□□	COUNTY
○ ○ ○ ○ ○ ○	MINOR CIVIL DIV. <sup>1</sup>
■ ■ ■ ■ ■ ■	Incorporated Place <sup>1</sup>
■ ■ ■ ■ ■ ■	Census Designated Place <sup>2</sup>
—	Voting District
● ● ● ● ● ●	SLD-Senate
▲ ▲ ▲ ▲ ▲ ▲	SLD-House
□ □ □ □ □ □	Minority
□ □ □ □ □ □	Inset
□ □ □ □ □ □	Out Area

Abbreviation Reference: AIR - American Indian Reservation; SDAISA - State Designated American Indian Statistical Area

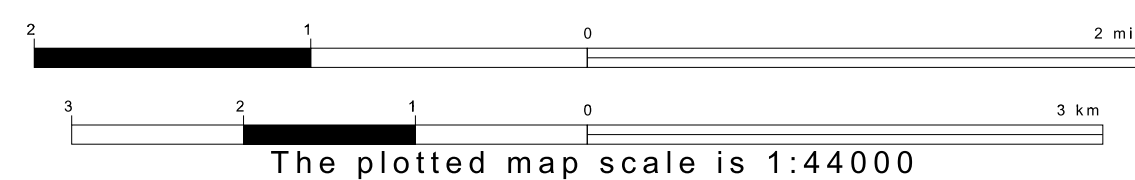
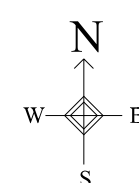
<sup>1</sup> A "\*" following a place name indicates that the place is coterminous with a MCD. A "\*" indicates that the place is also a MCD. In both cases, the MCD name is shown only when it differs from the place name.  
<sup>2</sup> A "\*" following a VTD code indicates an actual voting district. Its absence indicates that the VTD is a pseudo voting district or no information is available as to its status.

Voting Districts

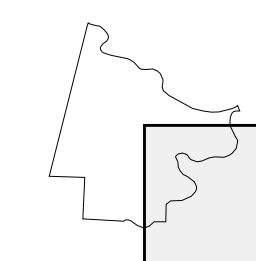
Code	Name
1*	Brazos Voting District
2*	C.C. General Voting District
3*	Esplanade Voting District
4*	Expressway/Rental Voting District
5*	JCMWardSPrairie1
6*	JCMWardSPrairie2
7*	Liberty/Osage Voting District
8*	St. Thomas Voting District
9*	Taos Voting District
10*	Wardville

38 238948N  
92 249342W

38 238948N  
91 877653W



Sheet Location within County



Key to Adjacent Sheets

1	2
3	4

ST: Missouri (29)  
 COU: Cole (051)  
 SHEET 4 OF 4 PARENT SHEETS

