

GEOGRAPHIC AREAS LEGEND

SYMBOL	NAME STYLE
*****	INTERNATIONAL
//////	STATE
□□□□□□	COUNTY
○ ○ ○ ○ ○	MINOR CIVIL DIV ¹
■ ■ ■ ■ ■	Incorporated Place ¹
■ ■ ■ ■ ■	Census Designated Place ¹
— — — — —	Voting District ²
● ● ● ● ●	SLD-Senate
▲ ▲ ▲ ▲ ▲	SLD-House

Military Inset Out Area

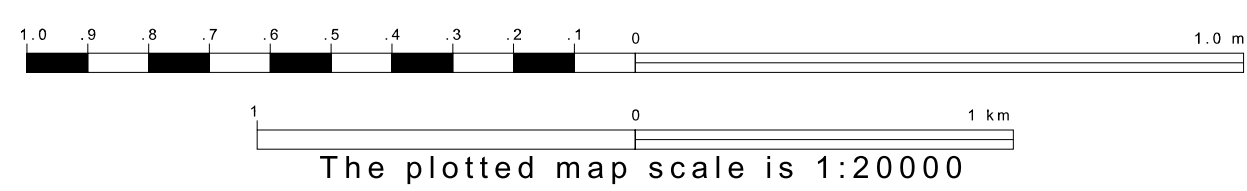
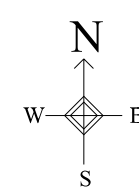
Abbreviation Reference: AIR - American Indian Reservation; SDAISA - State Designated American Indian Statistical Area

¹ A "*" following a place name indicates that the place is coterminous with a MCD. A "-" indicates that the place is also a false MCD. In both cases, the MCD name is shown only when it differs from the place name.

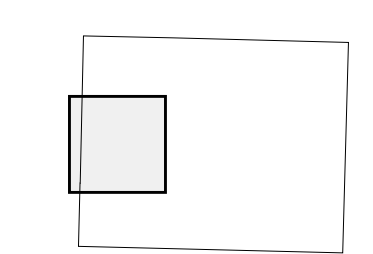
² A "*" following a VTD code indicates an actual voting district. Its absence indicates that the VTD is a pseudo voting district or no information is available as to its status.

Voting Districts

Code	Name
2*	Cedar&Ernest Voting District
4*	Eastlockwood Voting District
5*	Grant&Smith Voting District
13*	WestCenter&S.Sac. Voting District
13*	Westlockwood&Marion Voting District



Sheet Location within County



Key to Adjacent Sheets

1	2
4	5
7	8

ST: Missouri (29)
COU: Dade (057)
SHEET 4 OF 9 PARENT SHEETS

