

P. L. 94-171 COUNTY BLOCK MAP (CENSUS 2000)

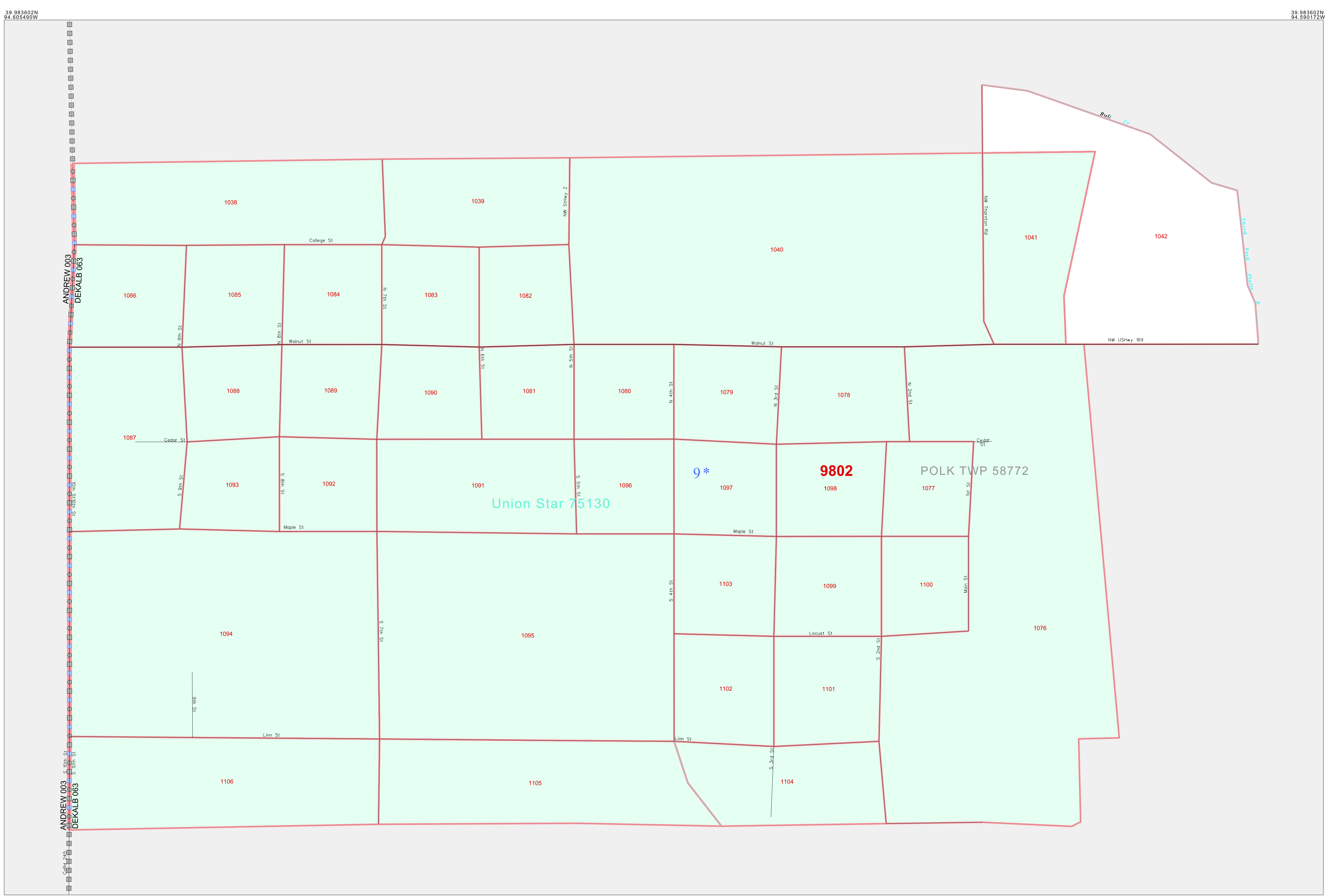
GEOGRAPHIC AREAS LEGEND

SYMBOL	NAME STYLE
*****	INTERNATIONAL
///////	STATE
■■■■■	COUNTY
○○○○○	MINOR CIVIL DIV ¹
■ ■ ■ ■ ■	Incorporated Place ²
■ ■ ■ ■ ■	Census Designated Place ²
.....	Corporate Offset Boundary
●●●●●	Voting District ³
■■■■■	Census Tract
■■■■■	BLOCK ³
■ ■ ■ ■ ■	Military
Inset	Inset
Out Area	Out Area

1 A "*" following a place name indicates that the place is coterminous with a MCD. A "-" indicates that the place is also a false MCD. In both cases, the MCD name is shown only when it differs from the place name.

2 A "*" following a VTD code indicates an actual voting district. Its absence indicates that the VTD is a pseudo voting district or no information is available as to its status.

3 A "*" following a block number indicates that the block number is repeated elsewhere in the block.



39 983602N 94 605490W

39 975786N 94 605490W

ANDREWS 003 DEKALB 063

ANDREWS 003 DEKALB 063

Sheet Location within County

Key to Adjacent Sheets

A01

ST: Missouri (29)
COU: DeKalb (063)
INSET SHEET A01

The plotted map scale is 1:2000

0 100 yd

0 100 m