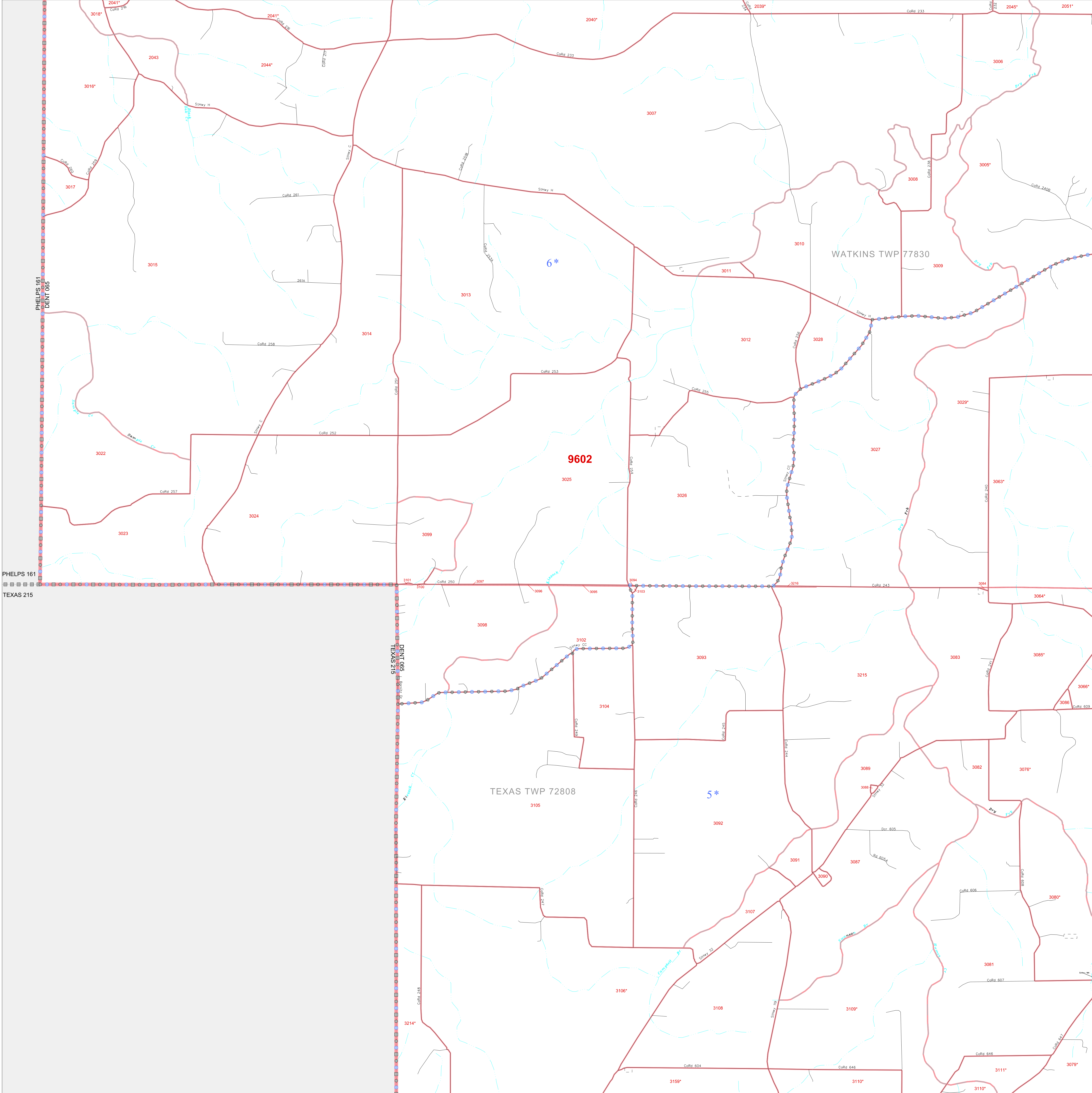


P. L. 94-171 COUNTY BLOCK MAP (CENSUS 2000)

37 669710N
91 814882W

37 669710N
91 848054W



GEOGRAPHIC AREAS LEGEND

SYMBOL	NAME STYLE
☆☆☆☆	INTERNATIONAL
//////	STATE
□□□□	COUNTY
○●○●	MINOR CIVIL DIV. ¹
Yellow box	Incorporated Place ¹
Light blue box	Census Designated Place ¹
Red dashed line	Corporate Offset Boundary
Blue dashed line	Voting District ²
Red solid line	Census Tract
Red dashed line	BLOCK ³

1 A "*" following a place name indicates that the place is coterminous with a MCD. "A*" indicates that the place is also a false MCD. In both cases, the MCD name is shown only when it differs from the place name.

2 A "*" following a VTD code indicates an actual voting district. Its absence indicates that the VTD is a pseudo voting district or no information is available as to its status.

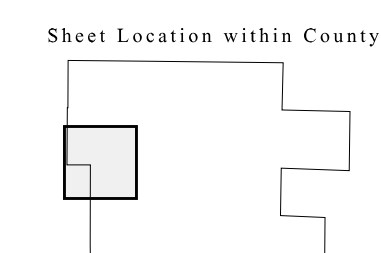
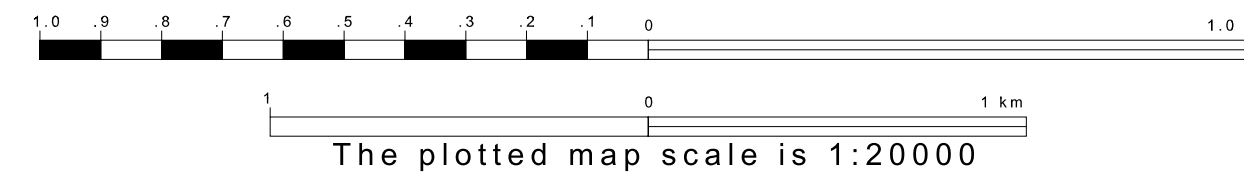
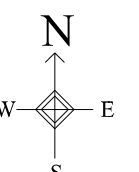
3 A "*" following a block number indicates that the block number is repeated elsewhere in the block.

Military Inset Out Area

PHELPS 161
TEXAS 215

37 536973N
91 814882W

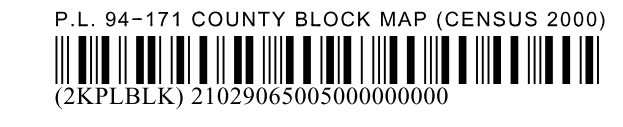
37 536973N
91 848054W



Key to Adjacent Sheets

1	2
5	6
9	10

ST: Missouri (29)
COU: Dent (065)
SHEET 5 OF 12 PARENT SHEETS



All legal boundaries and names are as of January 1, 2000. The boundaries shown on this map are for Census Bureau statistical data collection and tabulation purposes only; their depiction and designation for statistical purposes does not constitute a determination of jurisdictional authority or rights of ownership or entitlement. U.S. DEPARTMENT OF COMMERCE Economics and Statistics Administration U.S. Census Bureau