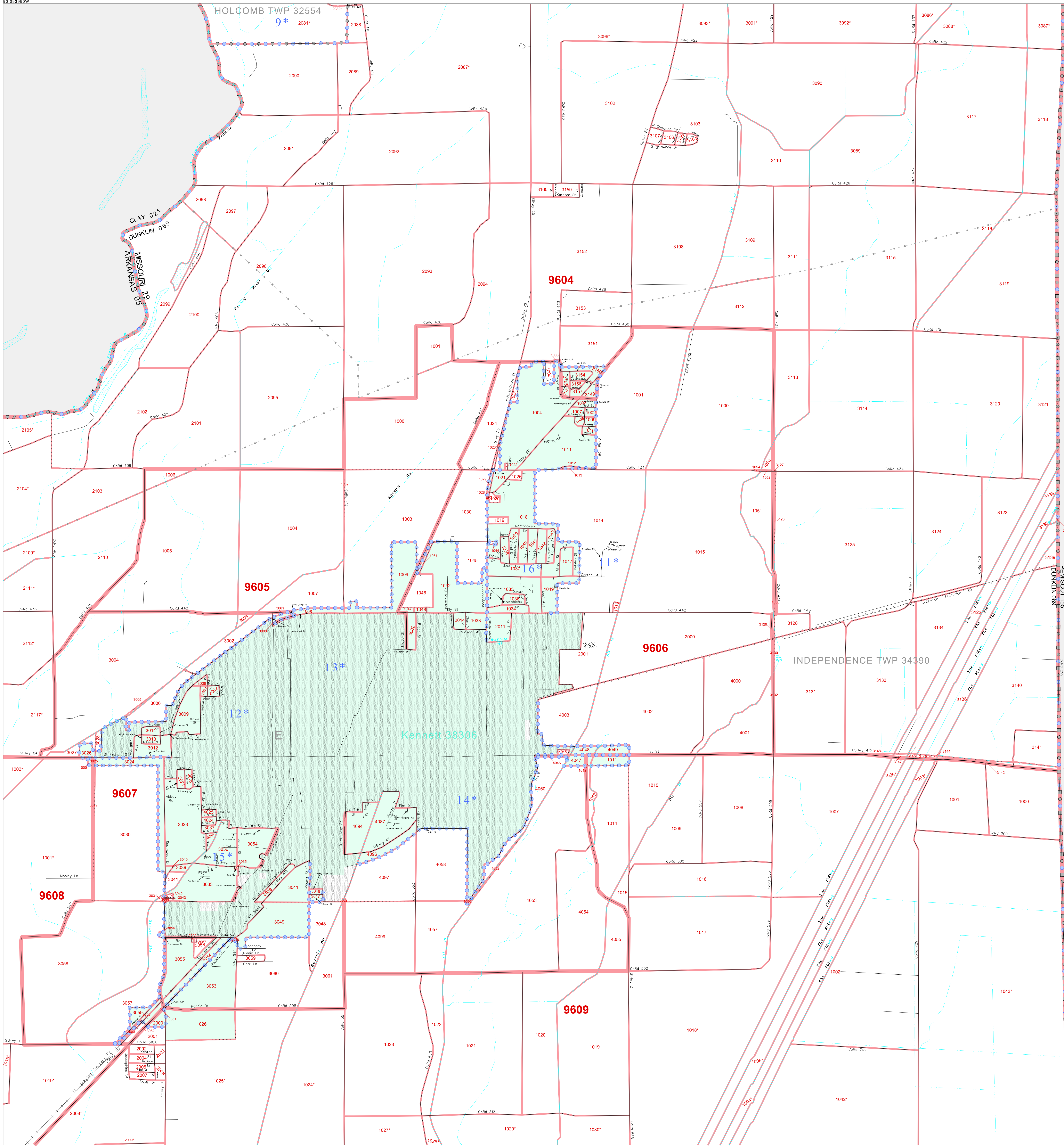


P. L. 94-171 COUNTY BLOCK MAP (CENSUS 2000)

36 197145N  
90 093990W

36 197145N  
89 990456W

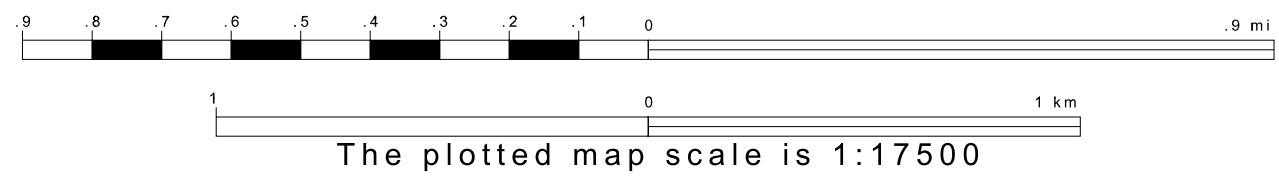
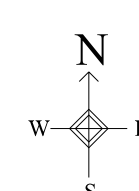


GEOGRAPHIC AREAS LEGEND

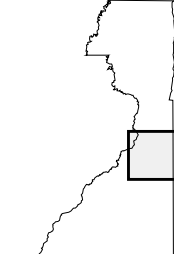
SYMBOL	NAME	STYLE
*****	INTERNATIONAL	
//////	STATE	
■■■■■	COUNTY	
□□□□□	MINOR CIVIL DIV.	
Yellow box	Incorporated Place <sup>1</sup>	
Pink box	Census Designated Place <sup>2</sup>	
.....	Corporate Offset Boundary	
.....	Voting District <sup>3</sup>	
Red line	Census Tract	
Blue dashed line	Military	

1 A "\*" following a place name indicates that the place is coterminous with a MCD. A "-" indicates that the place is also a false MCD. In both cases, the MCD name is shown only when it differs from the place name.  
 2 A "\*" following a VTD code indicates an actual voting district. Its absence indicates that the VTD is a pseudo voting district or no information is available as to its status.  
 3 A "\*" following a block number indicates that the block number is repeated elsewhere in the block.

Inset Out Area



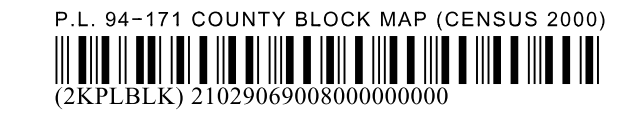
Sheet Location within County



Key to Adjacent Sheets

5	6
7	8
10	11

ST: Missouri (29)  
 COU: Dunklin (069)  
 SHEET 8 OF 14 PARENT SHEETS



All legal boundaries and names are as of January 1, 2000. The boundaries shown on this map are for Census Bureau statistical data collection and tabulation purposes only; their depiction and designation for statistical purposes does not constitute a determination of jurisdictional authority or rights of ownership or entitlement. U.S. DEPARTMENT OF COMMERCE Economics and Statistics Administration U.S. Census Bureau