

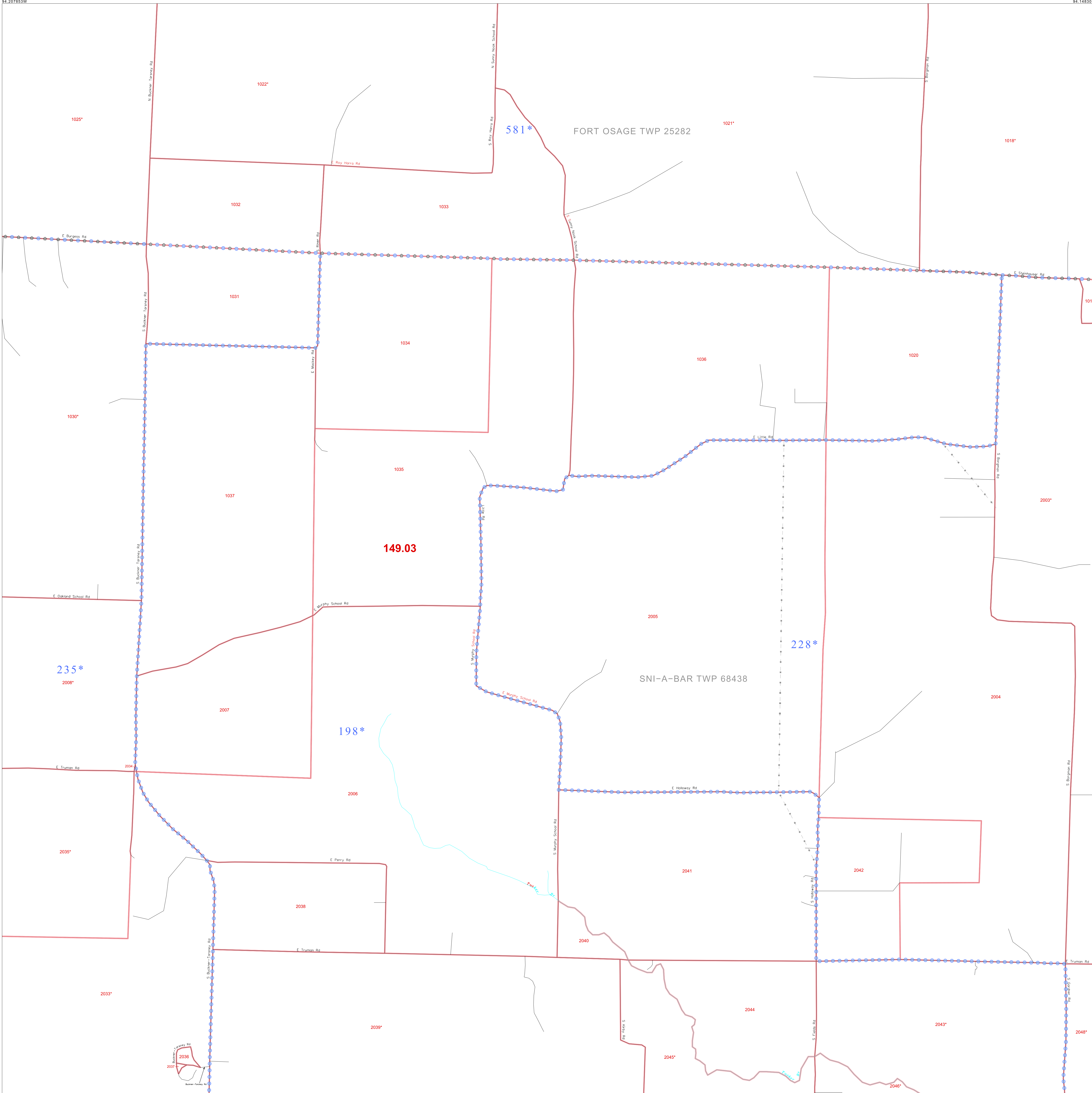
39 104708N
94 207853W

39 104708N
94 148303W

GEOGRAPHIC AREAS LEGEND

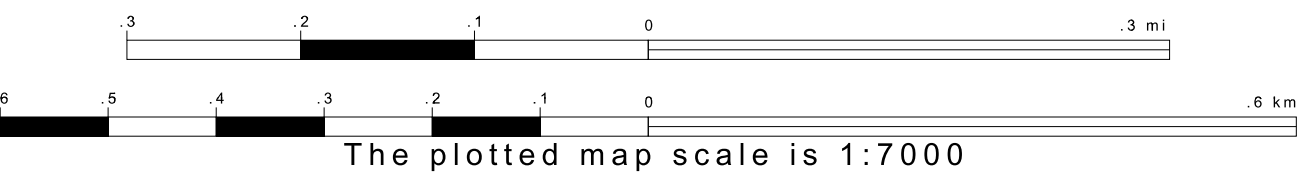
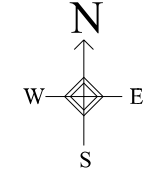
SYMBOL	NAME STYLE
*****	INTERNATIONAL
///////	STATE
■■■■■	COUNTY
●●●●●	MINOR CIVIL DIV. ¹
	Incorporated Place Census Designated Place
	Corporate Offset Boundary
●●●●●	Voting District ²
	Census Tract
■	BLOCK ³

1 A "*" following a place name indicates that the place is coterminous with a MCD. A "-" indicates that the place is also a false MCD. In both cases, the MCD name is shown only when it differs from the place name.
 2 A "*" following a VTD code indicates an actual voting district. Its absence indicates that the VTD is a pseudo voting district or no information is available as to its status.
 3 A "*" following a block number indicates that the block number is separated elsewhere in the block.

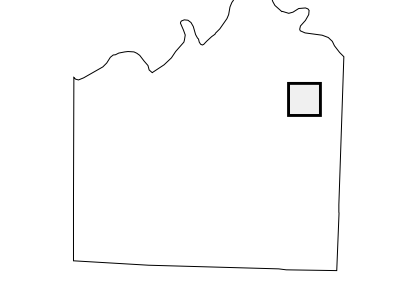


39 058262N
94 207853W

39 058262N
94 148303W



Sheet Location within County



Key to Adjacent Sheets

16	17	18
25	26	27
34	35	36

ST: Missouri (29)
 COU: Jackson (095)
 SHEET 26 OF 72 PARENT SHEETS

P. L. 94-171 COUNTY BLOCK MAP (CENSUS 2000)
 (CKFLBLK) 2102909302000000000

All legal boundaries and names are as of January 1, 2000.
 The boundaries shown on this map are for Census Bureau statistical data collection and tabulation purposes only; their depiction and designation for statistical purposes does not constitute a determination of jurisdictional authority or rights of ownership or entitlement.
 U.S. DEPARTMENT OF COMMERCE Economics and Statistics Administration U.S. Census Bureau