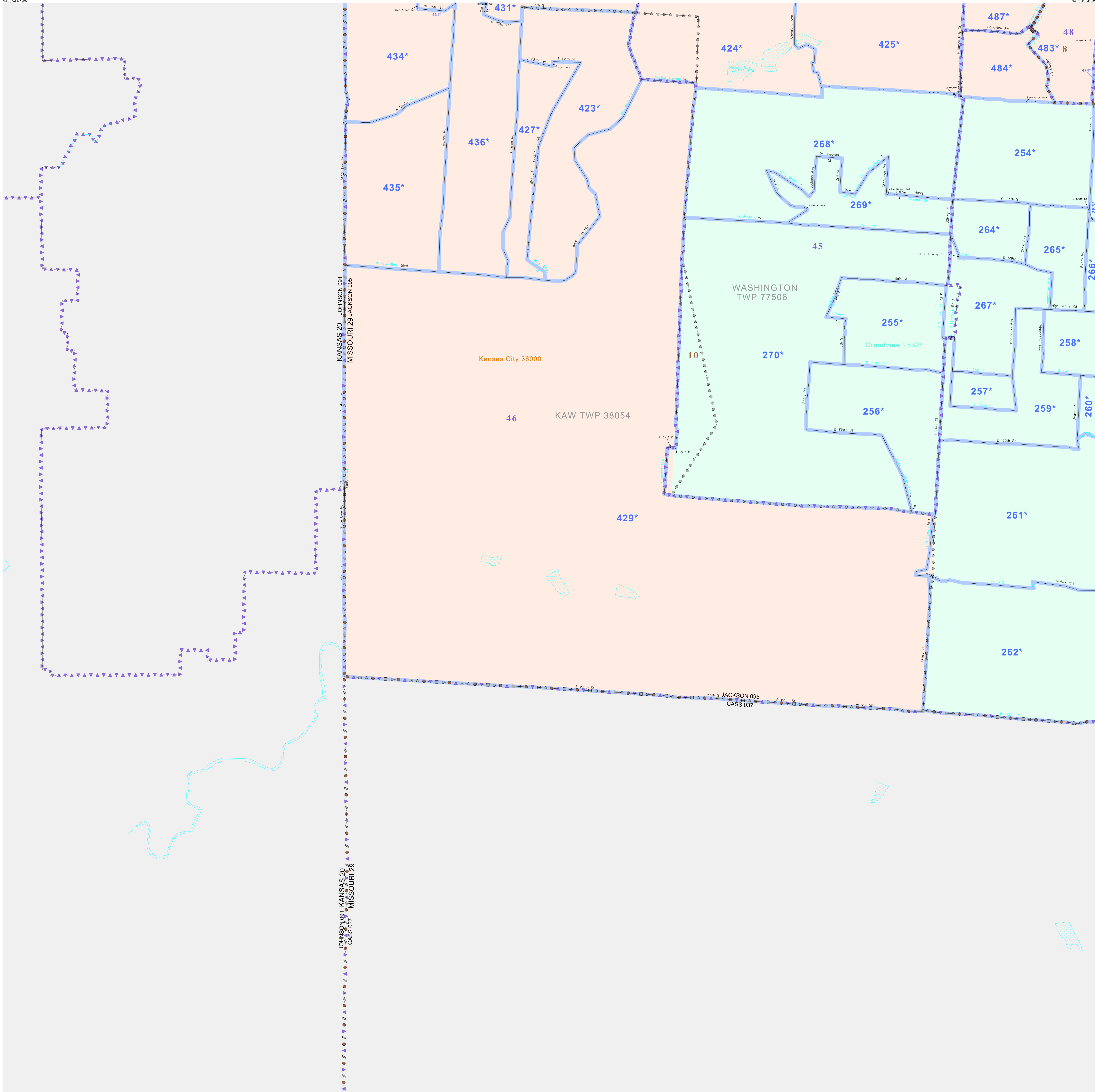


P.L. 94-171 VOTING DISTRICT/STATE LEGISLATIVE DISTRICT OUTLINE MAP (CENSUS 2000)

38 818922N
94 654479W

38 818922N
94 655603W



GEOGRAPHIC AREAS LEGEND

- | | |
|--------|--------------------------------------|
| SYMBOL | NAME STYLE |
| ***** | INTERNATIONAL |
| ----- | STATE |
| ===== | COUNTY |
| ----- | MINOR CIVIL DIV. ¹ |
| ----- | Incorporated Place ¹ |
| ----- | Census Designated Place ² |
| ----- | Voting District |
| ----- | SLD-Senate |
| ----- | SLD-House |

Abbreviation Reference: AIR - American Indian Reservation; SDAISA - State Designated American Indian Statistical Area

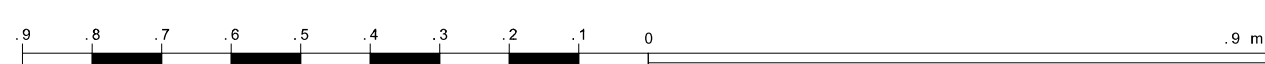
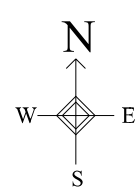
¹ A "*" following a place name indicates that the place is coterminous with a MCD. A "*" indicates that the place is also a false MCD. In both cases, the MCD name is shown only when it differs from the place name.
² A "*" following a VTD code indicates an actual voting district. Its absence indicates that the VTD is a pseudo voting district or no information is available as to its status.

Voting Districts

Code	Name
254*	WashingtonNo.1 Voting District
255*	WashingtonNo.10 Voting District
256*	WashingtonNo.11 Voting District
257*	WashingtonNo.12 Voting District
258*	WashingtonNo.13 Voting District
259*	WashingtonNo.14 Voting District
260*	WashingtonNo.15 Voting District
261*	WashingtonNo.16 Voting District
262*	WashingtonNo.17 Voting District
263*	WashingtonNo.2 Voting District
264*	WashingtonNo.3 Voting District
265*	WashingtonNo.4 Voting District
266*	WashingtonNo.5 Voting District
267*	WashingtonNo.6 Voting District
268*	WashingtonNo.7 Voting District
269*	WashingtonNo.8 Voting District
270*	WashingtonNo.9 Voting District
424*	KCW20P07
425*	KCW20P08
426*	KCW20P09
427*	KCW20P10
428*	KCW20P11&12
429*	KCW20P13
430*	KCW20P14&15
431*	KCW20P16
432*	KCW20P17
433*	KCW20P18
434*	KCW20P19
435*	KCW20P20
436*	KCW20P21
437*	KCW20P22
438*	KCW20P23
439*	KCW20P24
440*	KCW20P25
441*	KCW20P26
442*	KCW20P27
443*	KCW20P28
444*	KCW20P29
445*	KCW20P30
446*	KCW20P31
447*	KCW20P32
448*	KCW20P33
449*	KCW20P34
450*	KCW20P35
451*	KCW20P36
452*	KCW20P37
453*	KCW20P38
454*	KCW20P39
455*	KCW20P40
456*	KCW20P41
457*	KCW20P42
458*	KCW20P43
459*	KCW20P44
460*	KCW20P45
461*	KCW20P46
462*	KCW20P47
463*	KCW20P48
464*	KCW20P49
465*	KCW20P50
466*	KCW20P51
467*	KCW20P52
468*	KCW20P53
469*	KCW20P54
470*	KCW20P55
471*	KCW20P56
472*	KCW20P57
473*	KCW20P58
474*	KCW20P59
475*	KCW20P60
476*	KCW20P61
477*	KCW20P62
478*	KCW20P63
479*	KCW20P64
480*	KCW20P65
481*	KCW20P66
482*	KCW20P67
483*	KCW20P68
484*	KCW20P69
485*	KCW20P70
486*	KCW20P71
487*	KCW20P72

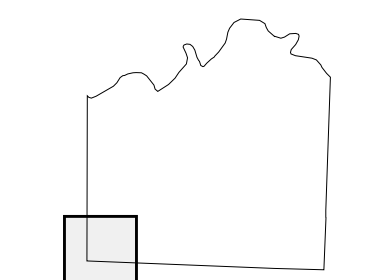
38 802805N
94 654479W

38 802805N
94 655603W



The plotted map scale is 1:17500

Sheet Location within County



Key to Adjacent Sheets

8	9
12	13

ST: Missouri (29)
 COU: Jackson (095)
 SHEET 12 OF 15 PARENT SHEETS

