

CENSUS TRACT OUTLINE MAP (CENSUS 2000)

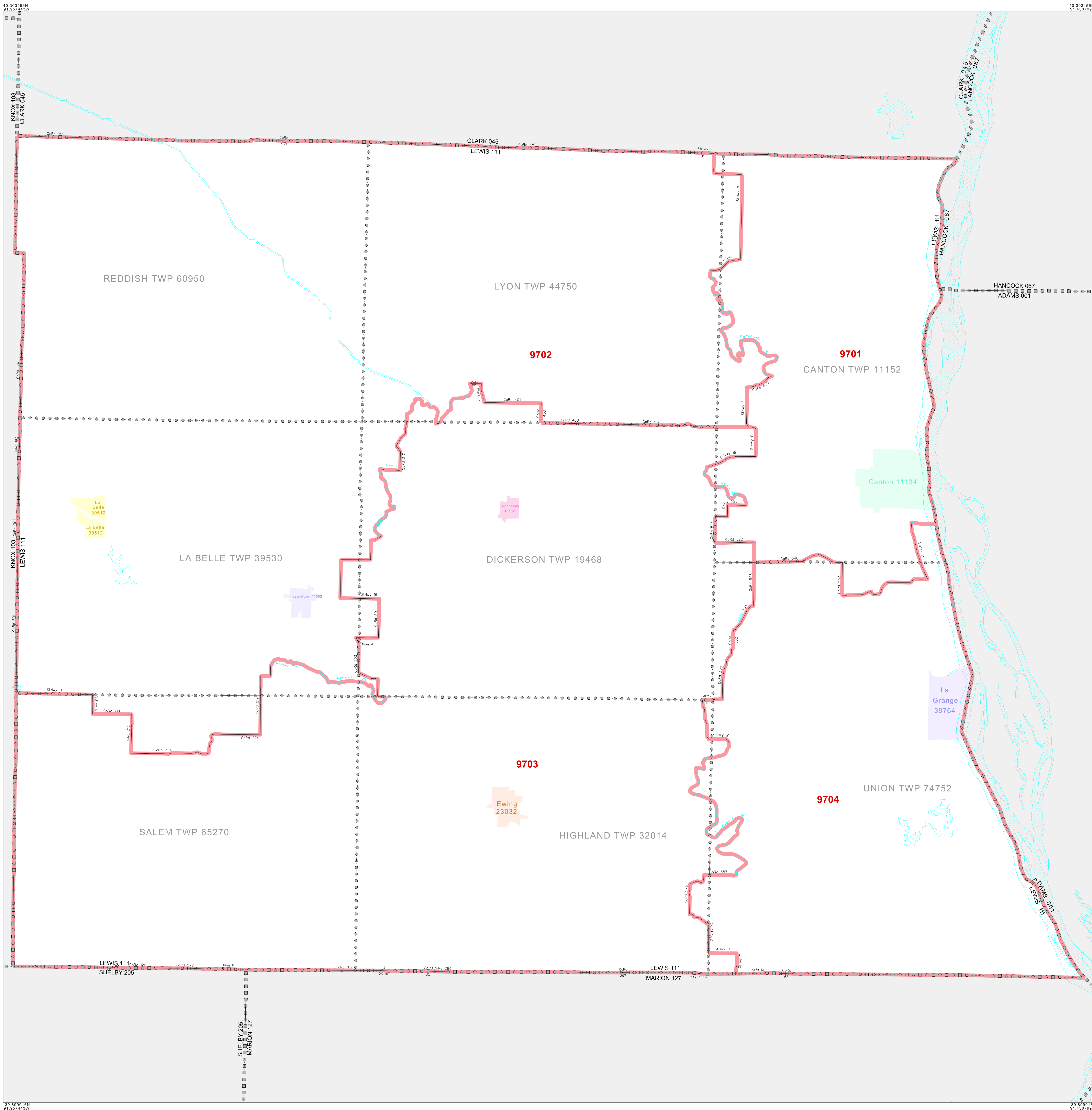
ABBREVIATED LEGEND

| SYMBOL | NAME STYLE |
|--------|---------------------------------------|
| ☆☆☆☆ | INTERNATIONAL |
| ***** | AIR (FEDERAL) |
| ◆◆◆◆◆ | Trust Land |
| ◇◇◇◇◇ | OTSA / TDSA |
| ▨▨▨▨▨ | TRIBAL SUBDIVISION |
| ▨▨▨▨▨ | AIR (State) |
| ◇◇◇◇◇ | SDA/SA |
| ▨▨▨▨▨ | STATE |
| ▨▨▨▨▨ | COUNTY |
| ▨▨▨▨▨ | MINOR CIVIL DIV' Consolidated City |
| ▨▨▨▨▨ | Incorporated Place ¹ |
| ▨▨▨▨▨ | Census Designated Place ¹ |
| ▨▨▨▨▨ | Census Tract |

Abbreviation Reference: AIR = American Indian Reservation; Trust Land = OTF-Reservation Trust Land; OTSA = Oklahoma Tribal Statistical Area; TDSA = Tribal Designated Statistical Area; Tribal Subdivision = American Indian Tribal Subdivision; SDA/SA = State Designated American Indian Statistical Area

¹ A "*" following a place name indicates that the place is coterminous with a MCD. A "-" indicates that the place is also a false MCD. In both cases, the MCD name is shown only when it differs from the place name.

| FEATURES | FEATURES |
|--------------------|---------------------|
| All Roads | Stream/Channel |
| Railroad | Intermittent Stream |
| Pipe/Power Line | River/Lake |
| Physical Feature | Glacier |
| Navigable Boundary | |
| Military | Inset |
| | Out Area |



All legal boundaries and names are as of January 1, 2000. The boundaries shown on this map are for Census Bureau statistical data collection and tabulation purposes only; their depiction and designation for statistical purposes does not constitute a determination of jurisdictional authority or rights of ownership or entitlement. U.S. DEPARTMENT OF COMMERCE Economics and Statistics Administration U.S. Census Bureau

ST: Missouri (29)
COU: Lewis (111)
SHEET 1 OF 1 PARENT SHEET

