

P.L. 94-171 VOTING DISTRICT/STATE LEGISLATIVE DISTRICT OUTLINE MAP (CENSUS 2000)

40.162577N
91.694121W

40.162577N
91.621352W



GEOGRAPHIC AREAS LEGEND

SYMBOL	NAME STYLE
*****	INTERNATIONAL
//////	STATE
■■■■■■	COUNTY
○○○○○○	MINOR CIVIL DIV ¹
■■■■■■	Incorporated Place ¹
■■■■■■	Census Designated Place ²
■■■■■■	Voting District ²
●●●●●●	SLD-Senate
▲▲▲▲▲▲	SLD-House

Military
 Inset
 Out Area

Abbreviation Reference: AIR - American Indian Reservation; SDAISA - State Designated American Indian Statistical Area

¹ A "*" following a place name indicates that the place is coterminous with a MCD. A "-" indicates that the place is also a false MCD. In both cases, the MCD name is shown only when it differs from the place name.

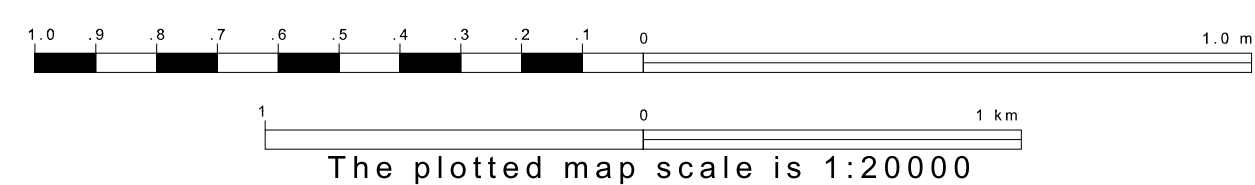
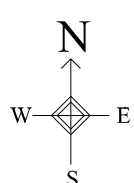
² A "*" following a VTD code indicates an actual voting district. Its absence indicates that the VTD is a pseudo voting district or no information is available as to its status.

Voting Districts

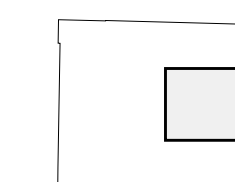
Code	Name
1*	Canton Voting District
2*	Durham Voting District
3*	Waynesville Voting District
8*	Monticello-Benjamin Voting District
11*	Williamstown-Dorrado Voting District

40.034898N
91.694121W

40.034898N
91.621352W



Sheet Location within County



Key to Adjacent Sheets

2	3	4
6	7	8
10	11	12

ST: Missouri (29)
 COU: Lewis (111)
 SHEET 7 OF 12 PARENT SHEETS

