

P.L. 94-171 VOTING DISTRICT/STATE LEGISLATIVE DISTRICT OUTLINE MAP (CENSUS 2000)

39 905518N
93 812032W

39 905518N
93 812032W



GEOGRAPHIC AREAS LEGEND

SYMBOL	NAME STYLE
*****	INTERNATIONAL
//////	STATE
□□□□□□	COUNTY
○ ○ ○ ○ ○ ○	MINOR CIVIL DIV. ¹
■ ■ ■ ■ ■ ■	Incorporated Place ¹
■ ■ ■ ■ ■ ■	Census Designated Place ²
— — — — —	Voting District
● ● ● ● ● ●	SLD-Senate
▲ ▲ ▲ ▲ ▲ ▲	SLD-House

Military
 Inset
 Out Area

Abbreviation Reference: AIR - American Indian Reservation; SDAISA - State Designated American Indian Statistical Area
¹ A "*" following a place name indicates that the place is coterminous with a MCD. A "-" indicates that the place is also a false MCD. In both cases, the MCD name is shown only when it differs from the place name.
² A "*" following a VTD code indicates an actual voting district. Its absence indicates that the VTD is a pseudo voting district or no information is available as to its status.

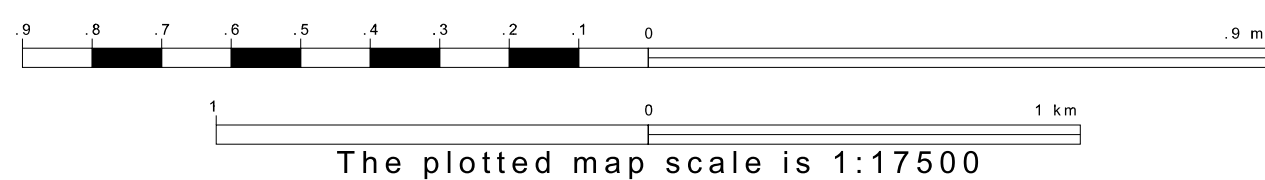
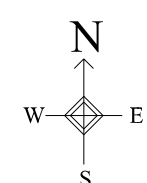
Voting Districts

Code	Name
12*	Jackson Voting District
15*	Mooreville Voting District
17*	Shopton Voting District

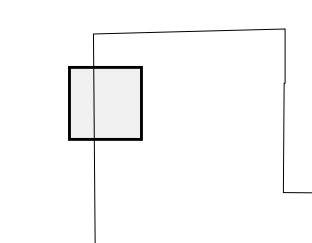


39 789418N
93 812032W

39 789418N
93 812032W



Sheet Location within County



Key to Adjacent Sheets

1	2
4	5
7	8

ST: Missouri (29)
 COU: Livingston (117)
 SHEET 4 OF 14 PARENT SHEETS

