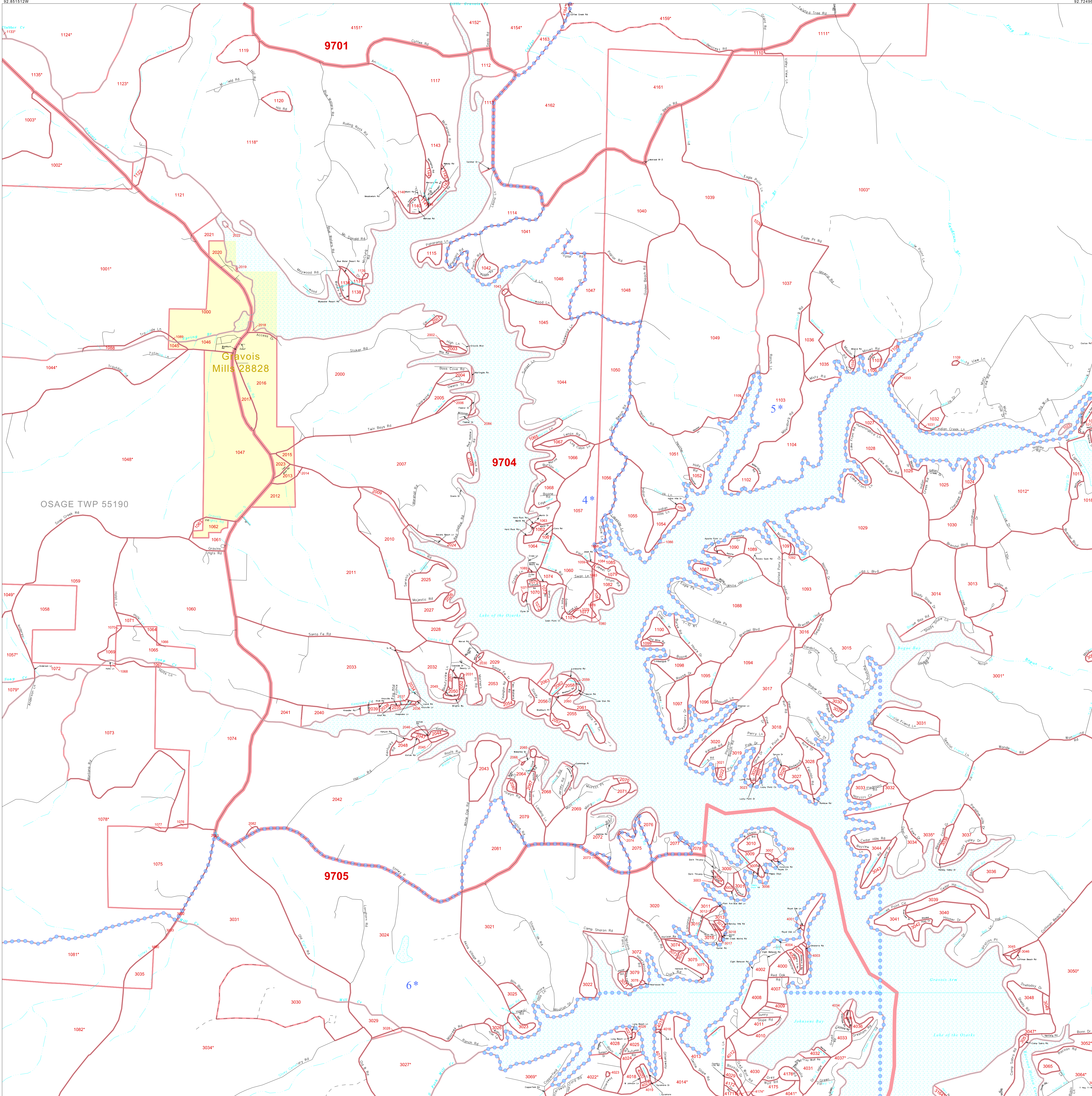


P. L. 94-171 COUNTY BLOCK MAP (CENSUS 2000)

38 340000N  
92 851512W

38 340000N  
92 724960W



GEOGRAPHIC AREAS LEGEND

- SYMBOL NAME STYLE
- \*\*\*\*\* INTERNATIONAL
- ////// STATE
- COUNTY
- MINOR CIVIL DIV.
- Incorporated Place<sup>1</sup>
- Census Designated Place<sup>2</sup>
- Corporate Offset Boundary
- Voting District<sup>3</sup>
- Census Tract<sup>3</sup>
- BLOCK<sup>3</sup>

1 A "\*" following a place name indicates that the place is coterminous with a MCD. A "-" indicates that the place is also a false MCD. In both cases, the MCD name is shown only when it differs from the place name.

2 A "\*" following a VTD code indicates an actual voting district. Its absence indicates that the VTD is a pseudo voting district or no information is available as to its status.

3 A "\*" following a block number indicates that the block number is repeated elsewhere in the block.

OSAGE TWP 55190

Gravois Mills 28828

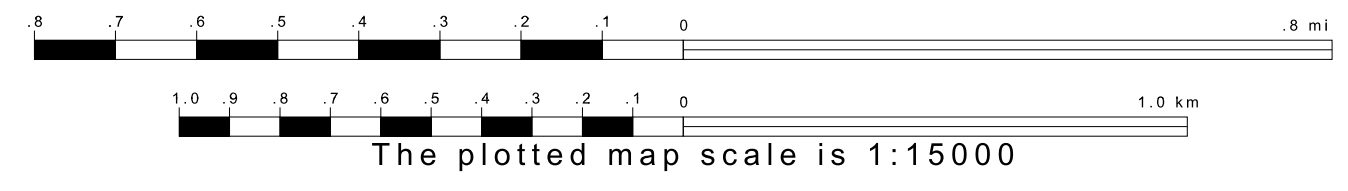
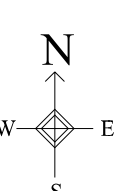
9705

9704

9701

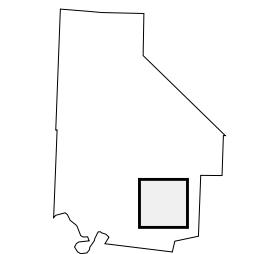
38 240462N  
92 851512W

38 240462N  
92 724960W



The plotted map scale is 1:15000

Sheet Location within County



Key to Adjacent Sheets

12	13	14
16	17	18
20	21	22

ST: Missouri (29)  
COU: Morgan (141)  
SHEET 17 OF 22 PARENT SHEETS



All legal boundaries and names are as of January 1, 2000. The boundaries shown on this map are for Census Bureau statistical data collection and tabulation purposes only; their depiction and designation for statistical purposes does not constitute a determination of jurisdictional authority or rights of ownership or entitlement. U.S. DEPARTMENT OF COMMERCE Economics and Statistics Administration U.S. Census Bureau