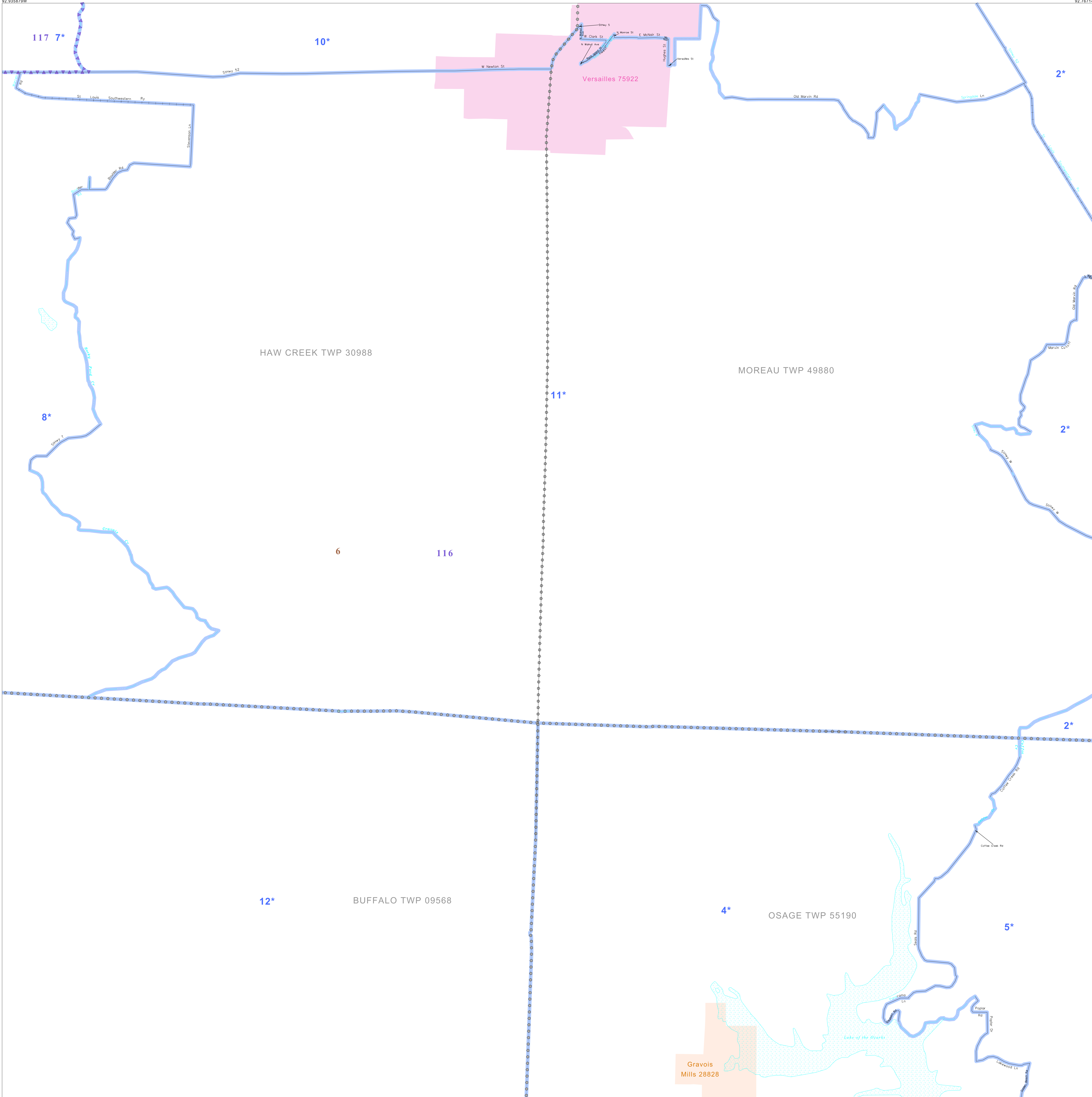


P.L. 94-171 VOTING DISTRICT/STATE LEGISLATIVE DISTRICT OUTLINE MAP (CENSUS 2000)

38 439530N
92 935870W

38 439530N
92 787143W



GEOGRAPHIC AREAS LEGEND

SYMBOL	NAME STYLE
*****	INTERNATIONAL
//////	STATE
□□□□□□	COUNTY
○●○●○●	MINOR CIVIL DIV. ¹
■	Incorporated Place ¹
■	Census Designated Place ¹
—	Voting District
●●●●●	SLD-Senate
▲▲▲▲▲	SLD-House

Abbreviation Reference: AIR = American Indian Reservation; SDAISA = State Designated American Indian Statistical Area

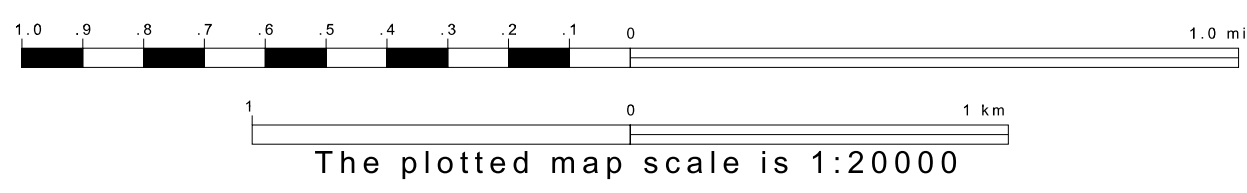
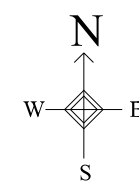
¹ A "*" following a place name indicates that the place is consecutive with a MCD. A "-" indicates that the place is also a MCD. In both cases, the MCD name is shown only when it differs from the place name.
² A "*" following a VTD code indicates an actual voting district. Its absence indicates that the VTD is a pseudo voting district or no information is available as to its status.

Voting Districts

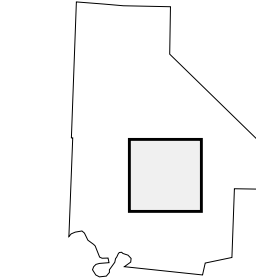
Code	Name
2*	Barnett&2 Voting District
4*	GravoisMills Voting District
5*	IndianCreek Voting District
7*	StoverNorth Voting District
8*	StoverSouth Voting District
10*	VersaillesNorth&Excelsior&FairgroundNorth Voting District
11*	VersaillesSouth&FairgroundSouth Voting District
12*	Webb Voting District

38 306821N
92 935870W

38 306821N
92 787143W



Sheet Location within County



Key to Adjacent Sheets

3	4	5
6	7	8
9	10	11

ST: Missouri (29)
COU: Morgan (141)
SHEET 7 OF 11 PARENT SHEETS



All legal boundaries and names are as of January 1, 2000. The boundaries shown on this map are for Census Bureau statistical data collection and tabulation purposes only; their depiction and designation for statistical purposes does not constitute a determination of jurisdictional authority or rights of ownership or entitlement. U.S. DEPARTMENT OF COMMERCE Economics and Statistics Administration U.S. Census Bureau