

38 439539N
92 767143W

38 439539N
92 998407W

GEOGRAPHIC AREAS LEGEND

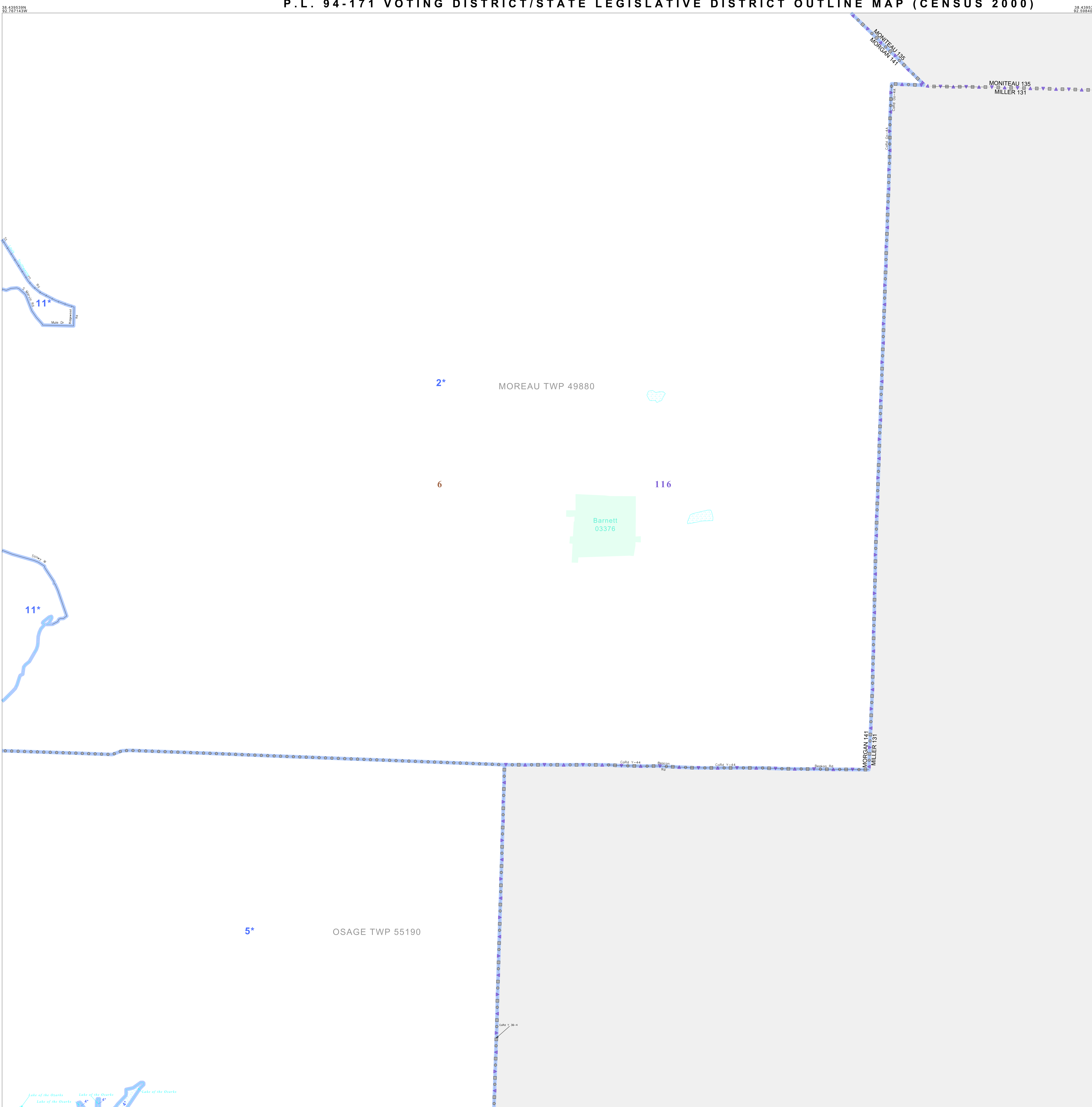
SYMBOL	NAME STYLE
*****	INTERNATIONAL
//////	STATE
□□□□	COUNTY
○ ○ ○ ○	MINOR CIVIL DIV ¹
■ ■ ■ ■	Incorporated Place ¹
■ ■ ■ ■	Census Designated Place ²
—	Voting District
● ● ● ●	SLD-Senate
▲ ▲ ▲ ▲	SLD-House
□ □ □ □	Boundary
□ □ □ □	Inset
□ □ □ □	Out Area

Abbreviation Reference: AIR - American Indian Reservation; SDAISA - State Designated American Indian Statistical Area

¹ A "*" following a place name indicates that the place is coterminous with a MCD. A "-" indicates that the place is also a false MCD. In both cases, the MCD name is shown only when it differs from the place name.
² A "*" following a VTD code indicates an actual voting district. Its absence indicates that the VTD is a pseudo voting district or no information is available as to its status.

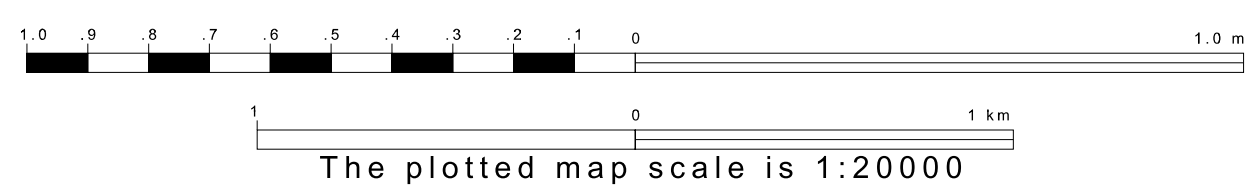
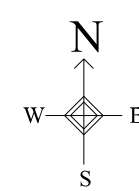
Voting Districts

Code	Name
2*	Barnett1&2 Voting District
4*	Graves Mills Voting District
5*	Indian Creek Voting District
11*	VeraillesSouthFairgroundsSouth Voting District

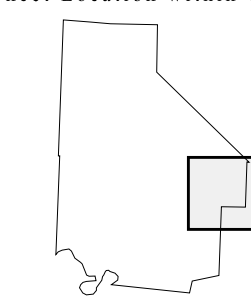


38 328823N
92 767143W

38 308823N
92 998407W



Sheet Location within County



Key to Adjacent Sheets

4	5
7	8
10	11

ST: Missouri (29)
 COU: Morgan (141)
 SHEET 8 OF 11 PARENT SHEETS



P.L. 94-171 VTD/SLD OUTLINE MAP (Census 2000)
 (CKPLVTD) 2152914100800000000