

P.L. 94-171 COUNTY BLOCK MAP (CENSUS 2000)

**GEOGRAPHIC AREAS LEGEND**

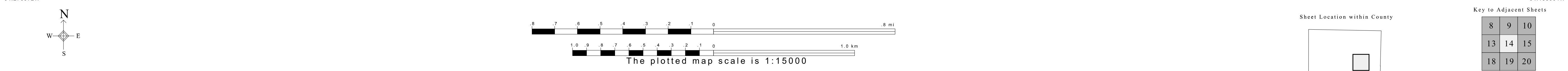
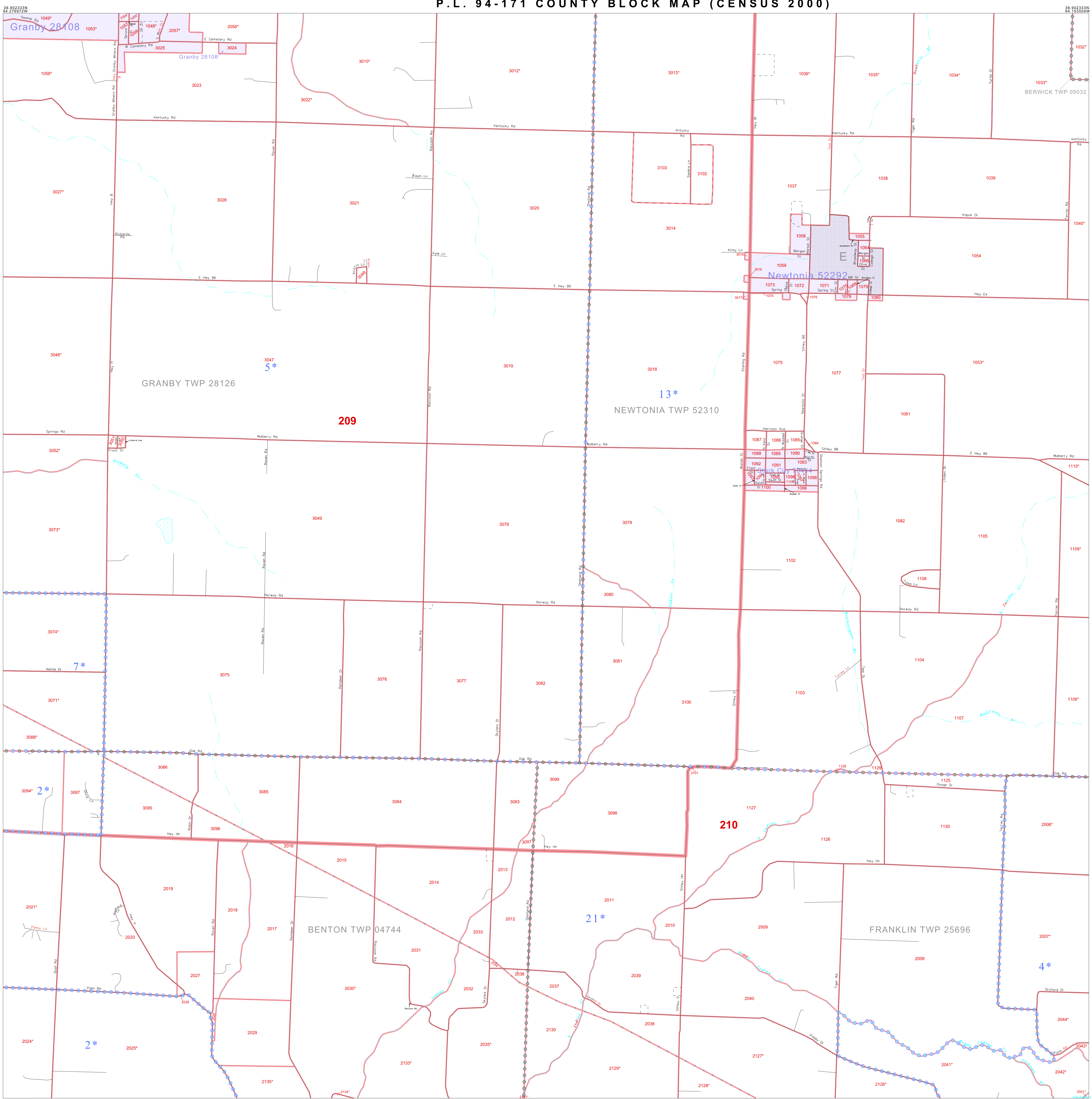
| SYMBOL  | NAME STYLE                           |
|---------|--------------------------------------|
| *****   | INTERNATIONAL                        |
| //////  | STATE                                |
| □□□□    | COUNTY                               |
| □□□□    | MINOR CIVIL DIV. <sup>1</sup>        |
| ■ ■ ■ ■ | Incorporated Place <sup>2</sup>      |
| ■ ■ ■ ■ | Census Designated Place <sup>2</sup> |
| -----   | Corporate Offset Boundary            |
| ●●●●    | Voting District <sup>3</sup>         |
| -----   | Census Tract                         |
| -----   | BLOCK <sup>3</sup>                   |
| -----   | Military                             |

Inset    Out Area

1 A "\*" following a place name indicates that the place is coterminous with a MCD. A "\*" indicates that the place is also a false MCD. In both cases, the MCD name is shown only when it differs from the place name.

2 A "\*" following a VTD code indicates an actual voting district. Its absence indicates that the VTD is a pseudo voting district or no information is available as to its status.

3 A "\*" following a block number indicates that the block number is repeated elsewhere in the block.



Key to Adjacent Sheets

|    |    |    |
|----|----|----|
| 8  | 9  | 10 |
| 13 | 14 | 15 |
| 18 | 19 | 20 |

ST: Missouri (29)  
 COU: Newton (145)  
 SHEET 14 OF 20 PARENT SHEETS