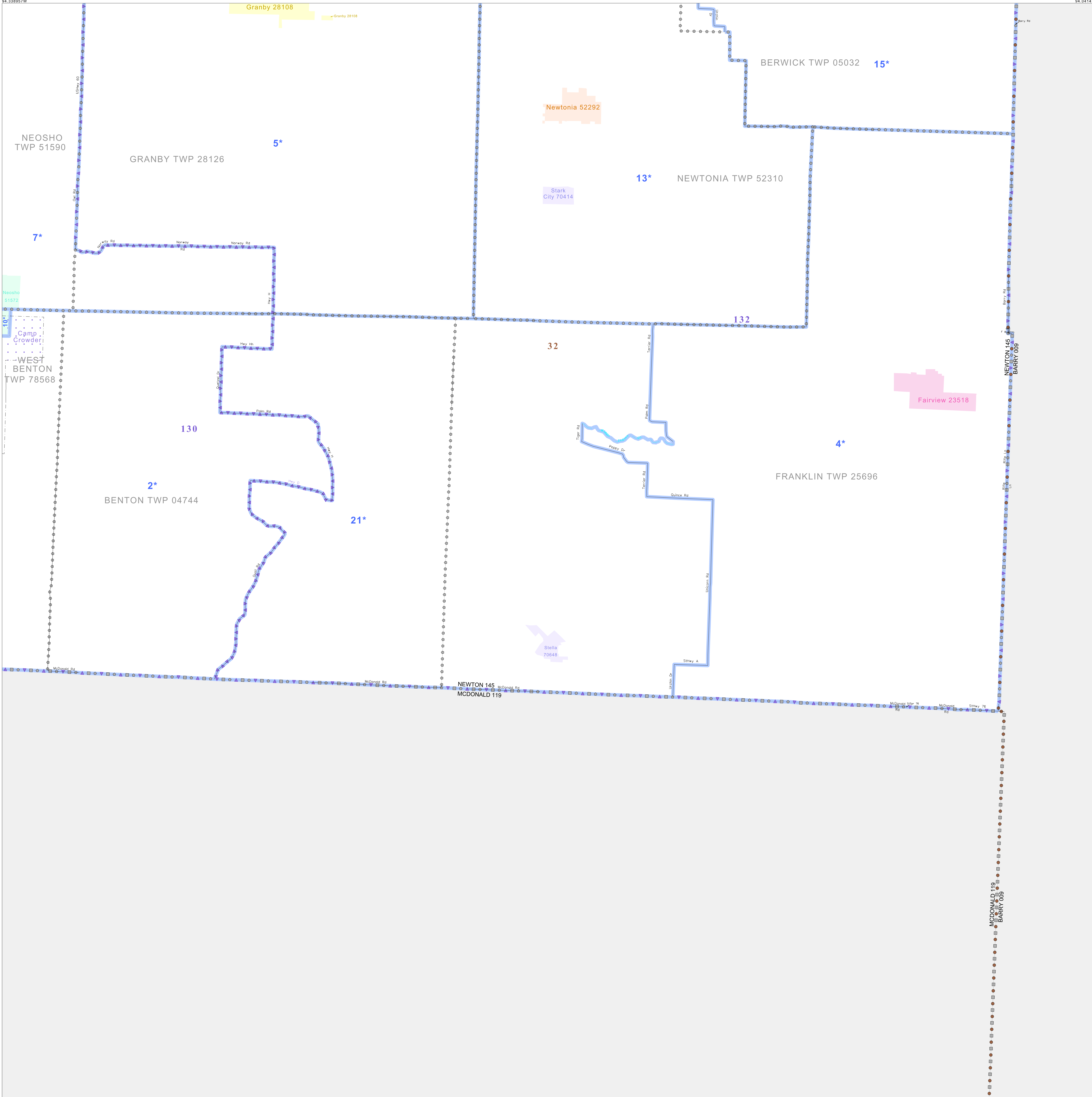


P.L. 94-171 VOTING DISTRICT/STATE LEGISLATIVE DISTRICT OUTLINE MAP (CENSUS 2000)

36 902333N
94 338957W

36 902333N
94 041433W



GEOGRAPHIC AREAS LEGEND

SYMBOL	NAME STYLE
*****	INTERNATIONAL
//////	STATE
□□□□	COUNTY
○	MINOR CIVIL DIV ¹
■	Incorporated Place ¹
■	Census Designated Place ²
—	Voting District
●●●●	SLD-Senate
▲▲▲▲	SLD-House

Abbreviation Reference: AIR - American Indian Reservation; SDAISA - State Designated American Indian Statistical Area

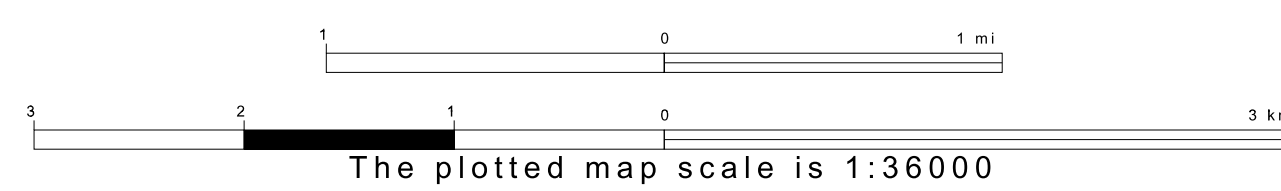
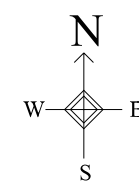
¹ A "*" following a place name indicates that the place is coterminous with a MCD. A "*" indicates that the place is also a MCD. In both cases, the MCD name is shown only when it differs from the place name.
² A "*" following a VTD code indicates an actual voting district. Its absence indicates that the VTD is a pseudo voting district or no information is available as to its status.

Voting Districts

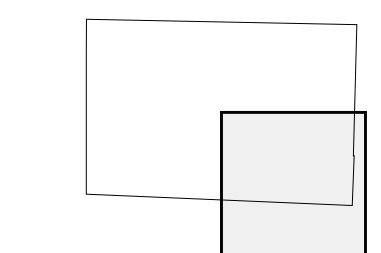
Code	Name
2*	Crowder Voting District
4*	Fairview Voting District
5*	Granby Voting District
7*	WestEast Voting District
13*	Newtonia Voting District
15*	Richter Voting District
21*	Stella Voting District

36 863378N
94 338957W

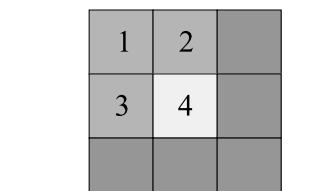
36 863378N
94 041433W



Sheet Location within County



Key to Adjacent Sheets



ST: Missouri (29)
 COU: Newton (145)
 SHEET 4 OF 4 PARENT SHEETS

