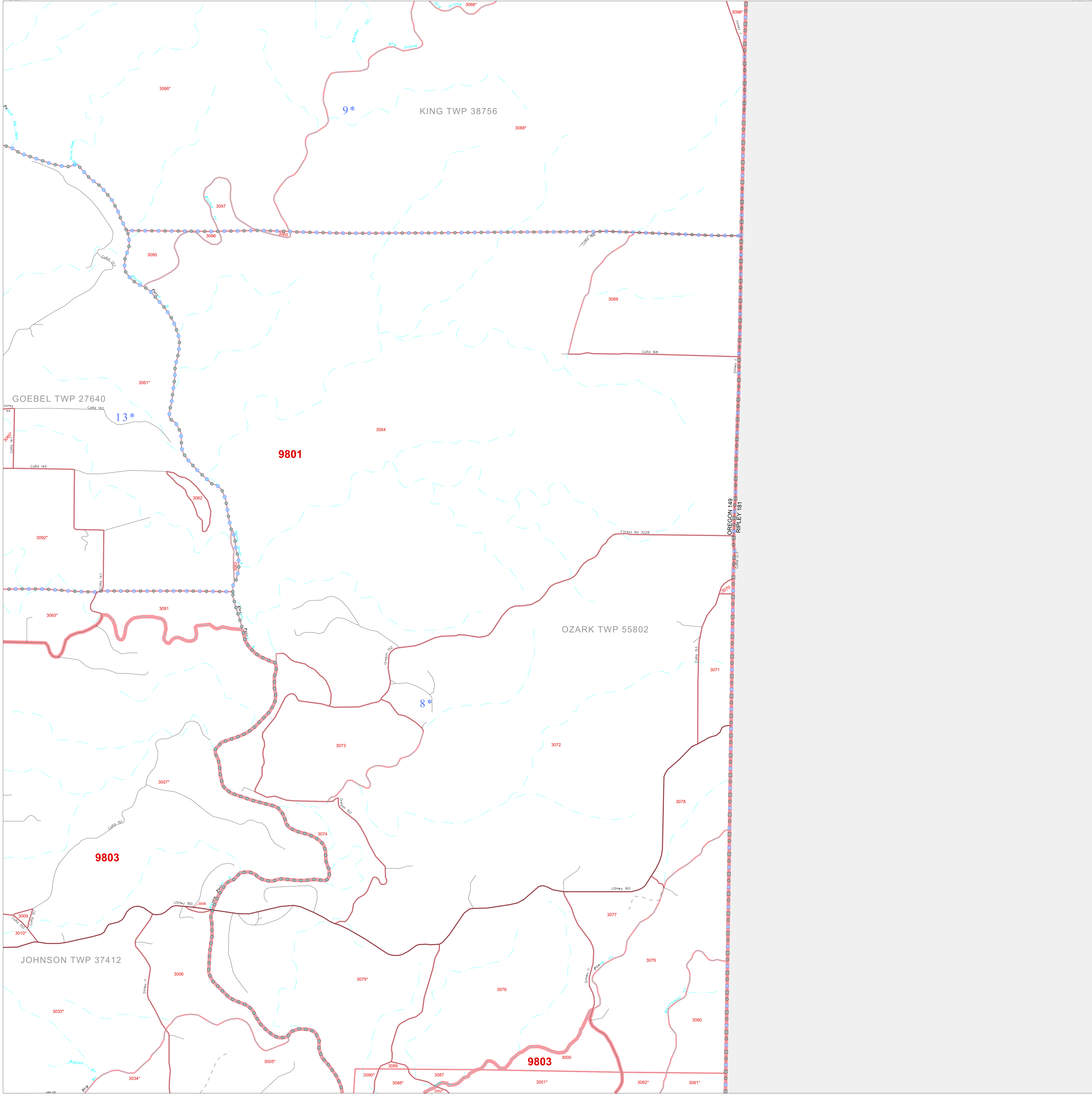


P.L. 94-171 COUNTY BLOCK MAP (CENSUS 2000)

36 759276N
91 232287W

36 759276N
91 232287W



GEOGRAPHIC AREAS LEGEND

SYMBOL	NAME STYLE
*****	INTERNATIONAL
///////	STATE
□□□□□	COUNTY
□□□□□	MINOR CIVIL DIV ¹
■ ■ ■ ■ ■	Incorporated Place ²
■ ■ ■ ■ ■	Census Designated Place ²
.....	Corporate Offset Boundary
●●●●●	Voting District ³
■■■■■	Census Tract
■■■■■	BLOCK ³
■ ■ ■ ■ ■	Military
Inset	Out Area

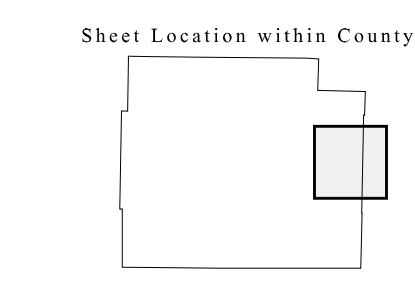
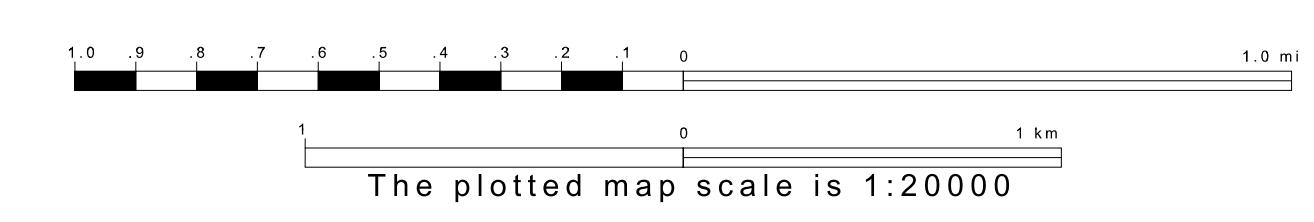
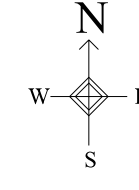
1 A "*" following a place name indicates that the place is coterminous with a MCD. A "-" indicates that the place is also a false MCD. In both cases, the MCD name is shown only when it differs from the place name.

2 A "*" following a VTD code indicates an actual voting district. Its absence indicates that the VTD is a pseudo voting district or no information is available as to its status.

3 A "*" following a block number indicates that the block number is repeated elsewhere in the block.

36 626518N
91 232287W

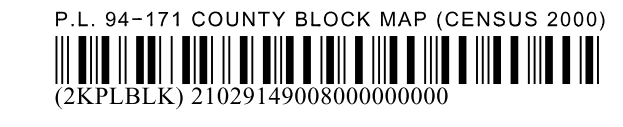
36 626518N
91 232287W



Key to Adjacent Sheets

3	4
7	8
11	12

ST: Missouri (29)
COU: Oregon (149)
SHEET 8 OF 12 PARENT SHEETS



All legal boundaries and names are as of January 1, 2000. The boundaries shown on this map are for Census Bureau statistical data collection and tabulation purposes only; their depiction and designation for statistical purposes does not constitute a determination of jurisdictional authority or rights of ownership or entitlement. U.S. DEPARTMENT OF COMMERCE Economics and Statistics Administration U.S. Census Bureau