

36 805309N
91 265250W

36 805309N
91 001509W

GEOGRAPHIC AREAS LEGEND

SYMBOL	NAME STYLE
*****	INTERNATIONAL
//////	STATE
□□□□	COUNTY
○ ○ ○ ○ ○	MINOR CIVIL DIV. ¹
Yellow box	Incorporated Place ¹
Pink box	Census Designated Place ¹
Blue line	Voting District ²
Brown dots	SLD-Senate
Blue triangles	SLD-House
Dashed line	Minority
Inset box	Inset
Out Area box	Out Area

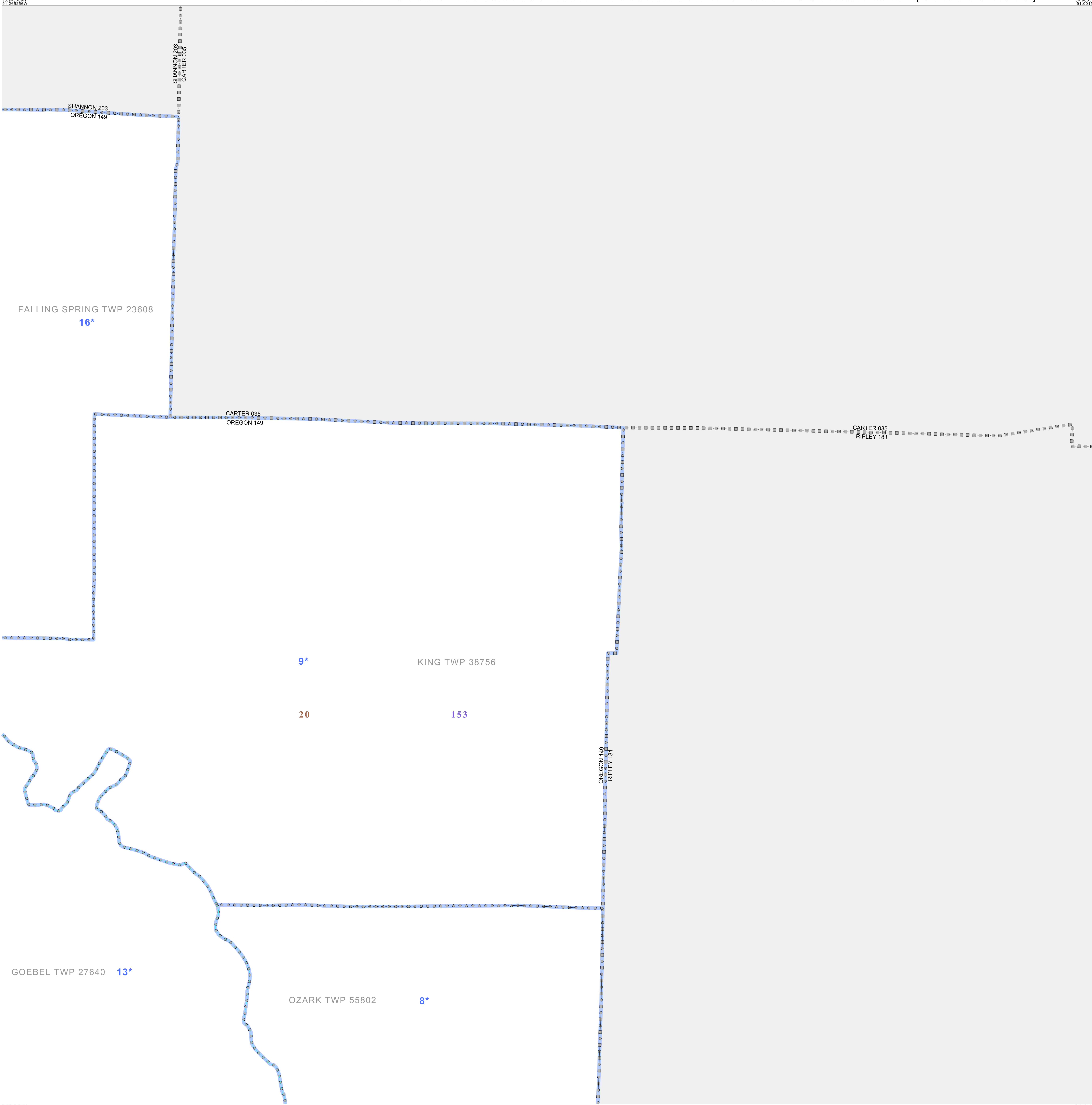
Abbreviation Reference: AIR = American Indian Reservation; SDAISA = State Designated American Indian Statistical Area

¹ A "*" following a place name indicates that the place is coterminous with a MCD. A "-" indicates that the place is also a false MCD. In both cases, the MCD name is shown only when it differs from the place name.

² A "*" following a VTD code indicates an actual voting district. Its absence indicates that the VTD is a pseudo voting district or no information is available as to its status.

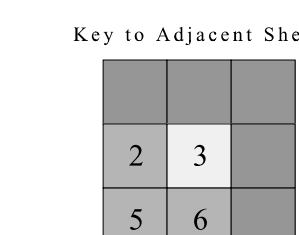
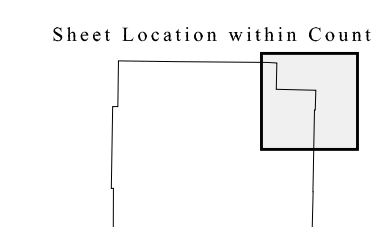
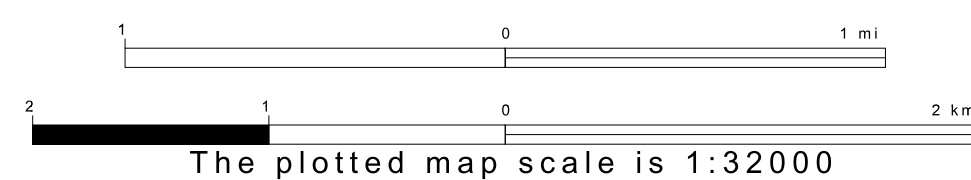
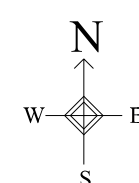
Voting Districts

Code	Name
8*	Johson@Zank Voting District
9*	King Voting District
13*	Phelps, Z. Voting District
15*	Woodside Voting District



36 692897N
91 265250W

36 692897N
91 001509W



ST: Missouri (29)
COU: Oregon (149)
SHEET 3 OF 6 PARENT SHEETS