

P.L. 94-171 VOTING DISTRICT/STATE LEGISLATIVE DISTRICT OUTLINE MAP (CENSUS 2000)

38 918473N
92 453011W

38 918473N
91 918022W

GEOGRAPHIC AREAS LEGEND

SYMBOL	NAME STYLE
*****	INTERNATIONAL
//////	STATE
□□□□	COUNTY
□□□□	MINOR CIVIL DIV ¹
■ ■ ■ ■	Incorporated Place ¹
■ ■ ■ ■	Census Designated Place ²
—	Voting District
● ● ● ●	SLD-Senate
▲ ▲ ▲ ▲	SLD-House
⋮	Minority
Inset	Inset
Out Area	Out Area

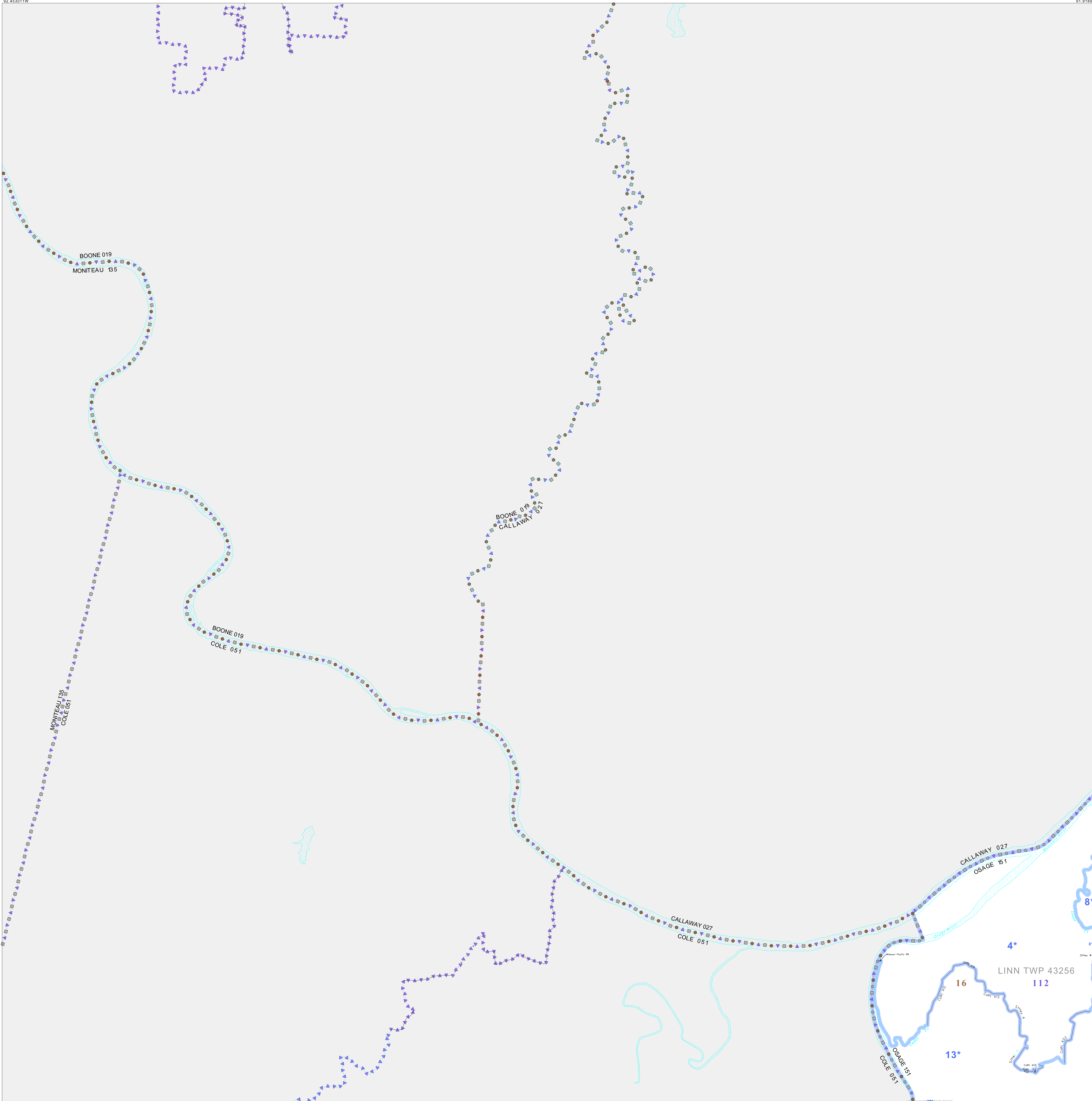
Abbreviation Reference: AIR = American Indian Reservation; SDAISA = State Designated American Indian Statistical Area

¹ A "*" following a place name indicates that the place is coterminous with a MCD. A "-" indicates that the place is also a false MCD. In both cases, the MCD name is shown only when it differs from the place name.

² A "*" following a VTD code indicates an actual voting district. Its absence indicates that the VTD is a pseudo voting district or no information is available as to its status.

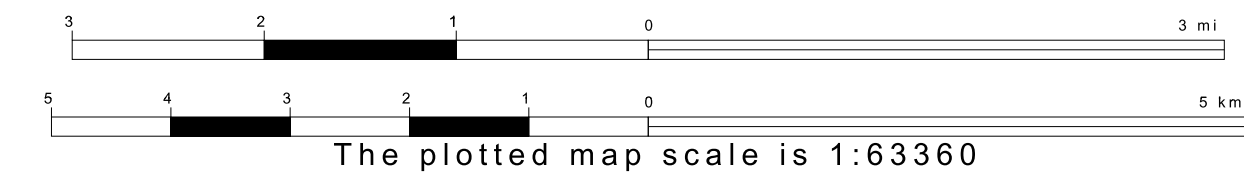
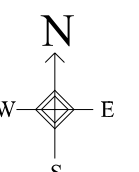
Voting Districts

Code	Name
4*	BennetsMill Voting District
8*	Frankenshaw Voting District
13*	Linnecreek Voting District
20*	Westphalia Voting District

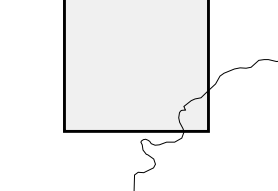


38 498028N
92 453011W

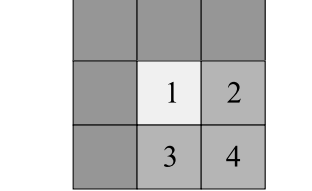
38 498028N
91 918022W



Sheet Location within County



Key to Adjacent Sheets



ST: Missouri (29)
COU: Osage (151)
SHEET 1 OF 4 PARENT SHEETS

