

P.L. 94-171 VOTING DISTRICT/STATE LEGISLATIVE DISTRICT OUTLINE MAP (CENSUS 2000)

37 655136N
90 012165W

37 655136N
89 811616W

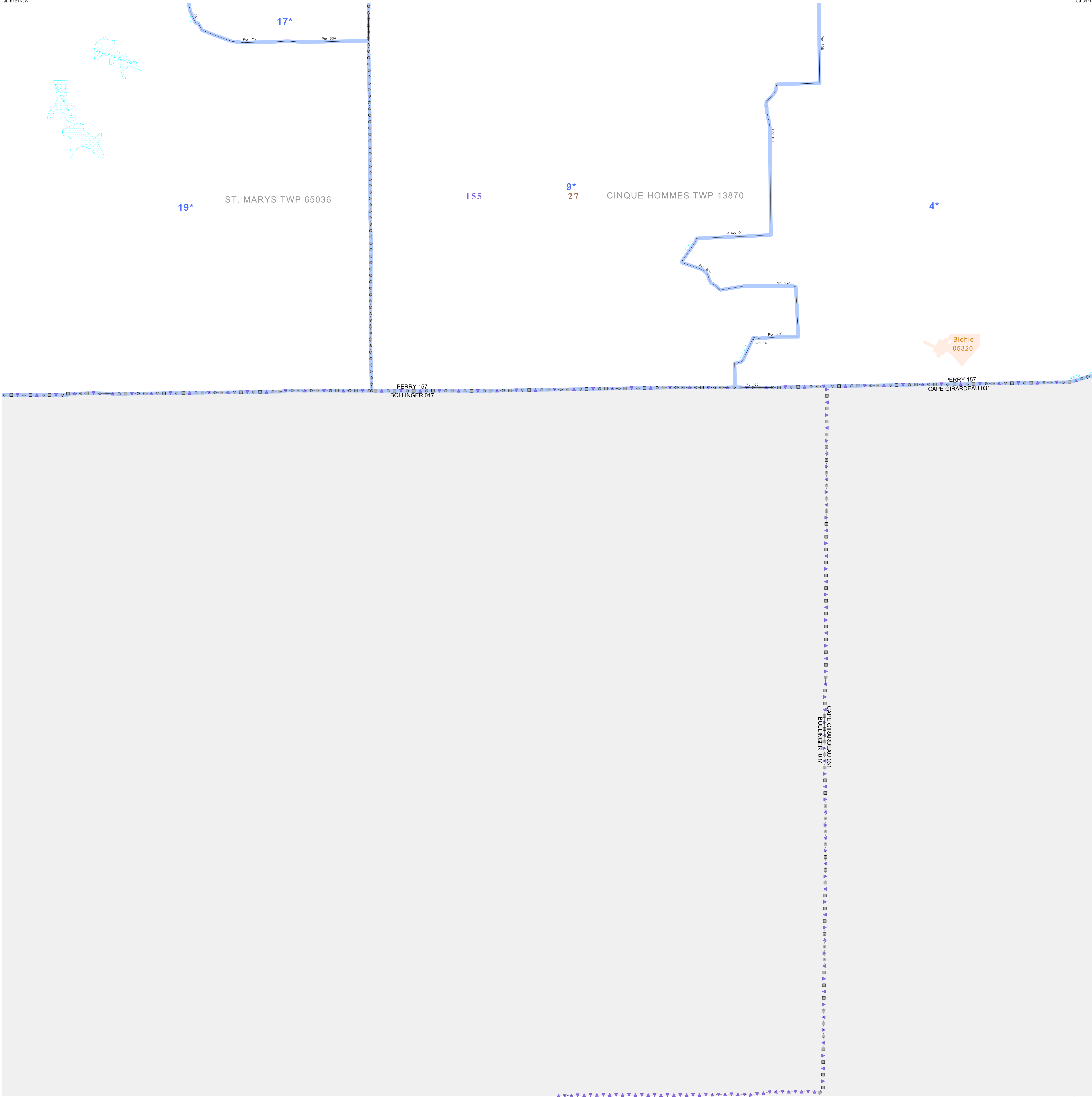
GEOGRAPHIC AREAS LEGEND

SYMBOL	NAME STYLE
*****	INTERNATIONAL
///////	STATE
■■■■■	COUNTY
○	MINOR CIVIL DIV. ¹
■	Incorporated Place ¹
■	Census Designated Place ²
—	Voting District
●●●●●	SLD—Senate
▲▲▲▲▲	SLD—House

Abbreviation Reference: AIR = American Indian Reservation; SDAISA = State Designated American Indian Statistical Area
¹ A "*" following a place name indicates that the place is coterminous with a MCD. A "-" indicates that the place is also a false MCD. In both cases, the MCD name is shown only when it differs from the place name.
² A "*" following a VTD code indicates an actual voting district. Its absence indicates that the VTD is a pseudo voting district or no information is available as to its status.

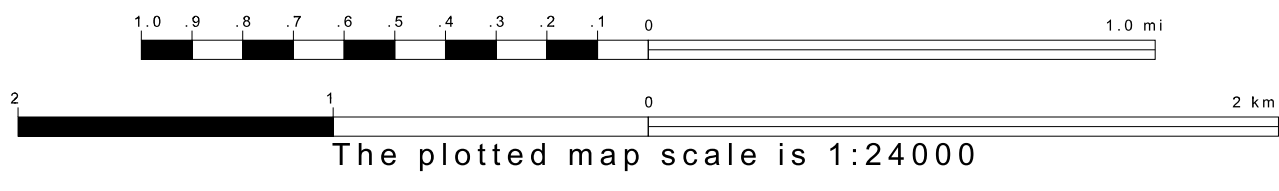
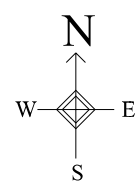
Voting Districts

Code	Name
4*	Biehle Voting District
9*	Highland Voting District
19*	Shirelake Voting District
19*	Yount Voting District

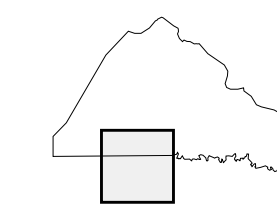


37 495856N
90 012165W

37 495856N
89 811616W



Sheet Location within County



Key to Adjacent Sheets

3	4	5
7	8	9

ST: Missouri (29)
 COU: Perry (157)
 SHEET 8 OF 10 PARENT SHEETS