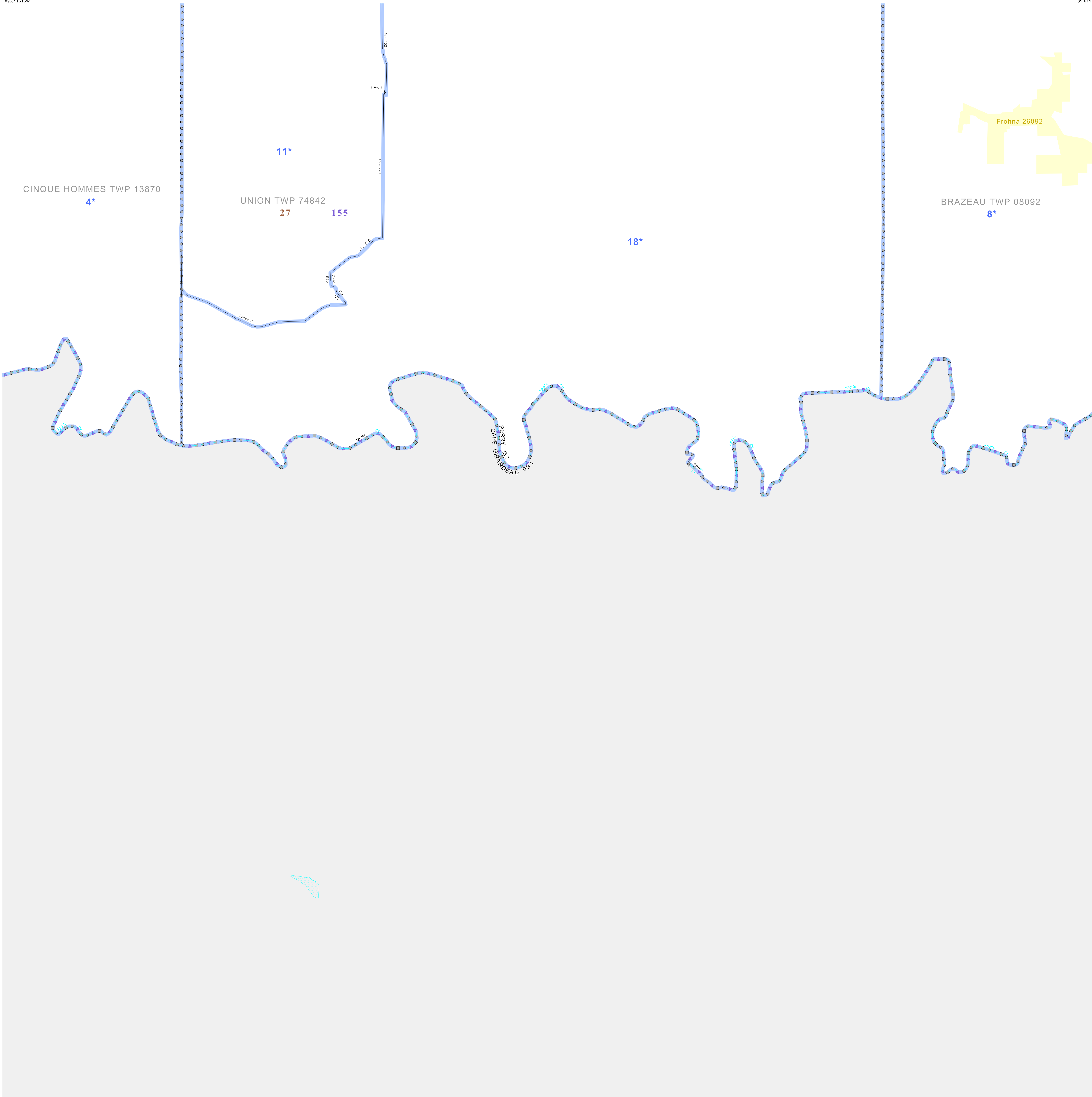


P.L. 94-171 VOTING DISTRICT/STATE LEGISLATIVE DISTRICT OUTLINE MAP (CENSUS 2000)

37 655136N  
89 811616W

37 655136N  
89 811616W



GEOGRAPHIC AREAS LEGEND

SYMBOL	NAME STYLE
*****	INTERNATIONAL
//////	STATE
□□□□□□	COUNTY
○ ○ ○ ○ ○	MINOR CIVIL DIV <sup>1</sup>
■ ■ ■ ■ ■	Incorporated Place <sup>1</sup>
■ ■ ■ ■ ■	Census Designated Place <sup>1</sup>
— — — — —	Voting District <sup>2</sup>
● ● ● ● ●	SLD-Senate
▲ ▲ ▲ ▲ ▲	SLD-House

Abbreviation Reference: AIR - American Indian Reservation; SDAISA - State Designated American Indian Statistical Area

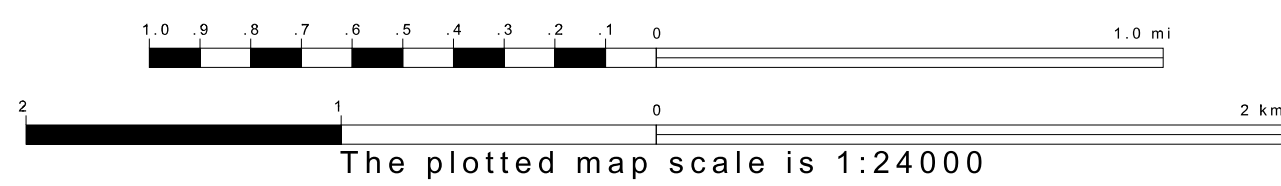
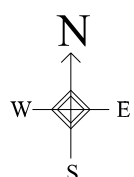
<sup>1</sup> A "\*" following a place name indicates that the place is consecutive with a MCD. A "-" indicates that the place is also a false MCD. In both cases, the MCD name is shown only when it differs from the place name.  
<sup>2</sup> A "\*" following a VTD code indicates an actual voting district. Its absence indicates that the VTD is a pseudo voting district or no information is available as to its status.

Voting Districts

Code	Name
4*	Betha Voting District
8*	Frohna Voting District
11*	Lansham Voting District
18*	Uniontown Voting District

37 495856N  
89 811616W

37 495856N  
89 811616W



Sheet Location within County



Key to Adjacent Sheets

4	5	6
8	9	10

ST: Missouri (29)  
 COU: Perry (157)  
 SHEET 9 OF 10 PARENT SHEETS

