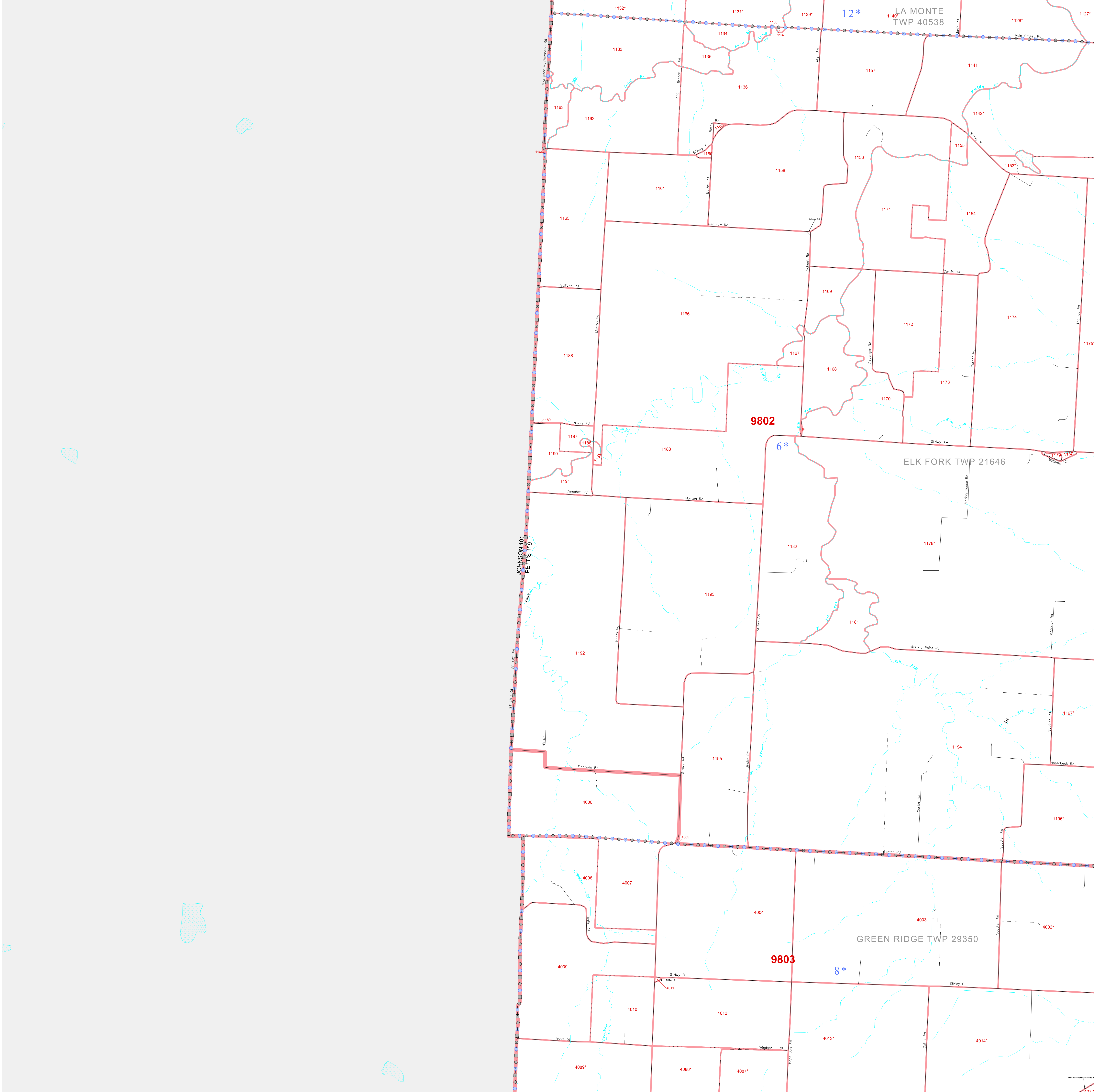


P. L. 94-171 COUNTY BLOCK MAP (CENSUS 2000)

38 724578N  
93 578130W

38 724578N  
93 429901W



GEOGRAPHIC AREAS LEGEND

SYMBOL	NAME STYLE
☆☆☆☆☆	INTERNATIONAL
///////	STATE
□□□□□	COUNTY
□□□□□	MINOR CIVIL DIV <sup>1</sup>
■ ■ ■ ■ ■	Incorporated Place <sup>2</sup>
■ ■ ■ ■ ■	Census Designated Place <sup>2</sup>
.....	Corporate Offset Boundary
●●●●●	Voting District <sup>3</sup>
■ ■ ■ ■ ■	Census Tract
■ ■ ■ ■ ■	BLOCK <sup>3</sup>

1 A "\*" following a place name indicates that the place is coterminous with a MCD. A "-" indicates that the place is also a false MCD. In both cases, the MCD name is shown only when it differs from the place name.

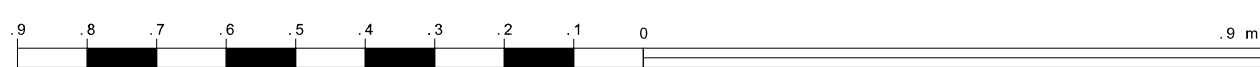
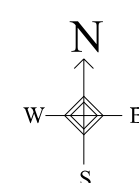
2 A "\*" following a VTD code indicates an actual voting district. Its absence indicates that the VTD is a pseudo voting district or no information is available as to its status.

3 A "\*" following a block number indicates that the block number is repeated elsewhere in the block.

Military Inset Out Area

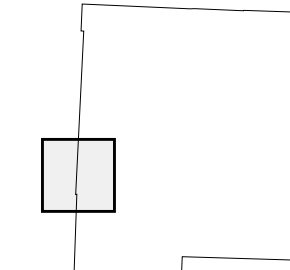
38 608456N  
93 578130W

38 608456N  
93 429901W



The plotted map scale is 1:17500

Sheet Location within County



Key to Adjacent Sheets

5	6
9	10
13	14

ST: Missouri (29)  
COU: Pettis (159)  
SHEET 9 OF 16 PARENT SHEETS

