

P.L. 94-171 VOTING DISTRICT/STATE LEGISLATIVE DISTRICT OUTLINE MAP (CENSUS 2000)

38 008922N
92 112669W

38 008922N
91 777182W

GEOGRAPHIC AREAS LEGEND

SYMBOL	NAME STYLE
*****	INTERNATIONAL
//////	STATE
□□□□□□	COUNTY
○ ○ ○ ○ ○ ○	MINOR CIVIL DIV. ¹
■ ■ ■ ■ ■ ■	Incorporated Place ¹
■ ■ ■ ■ ■ ■	Census Designated Place ²
—	Voting District
● ● ● ● ● ●	SLD—Senate
▲ ▲ ▲ ▲ ▲ ▲	SLD—House
⋯	Minority
Inset	Inset
Out Area	Out Area

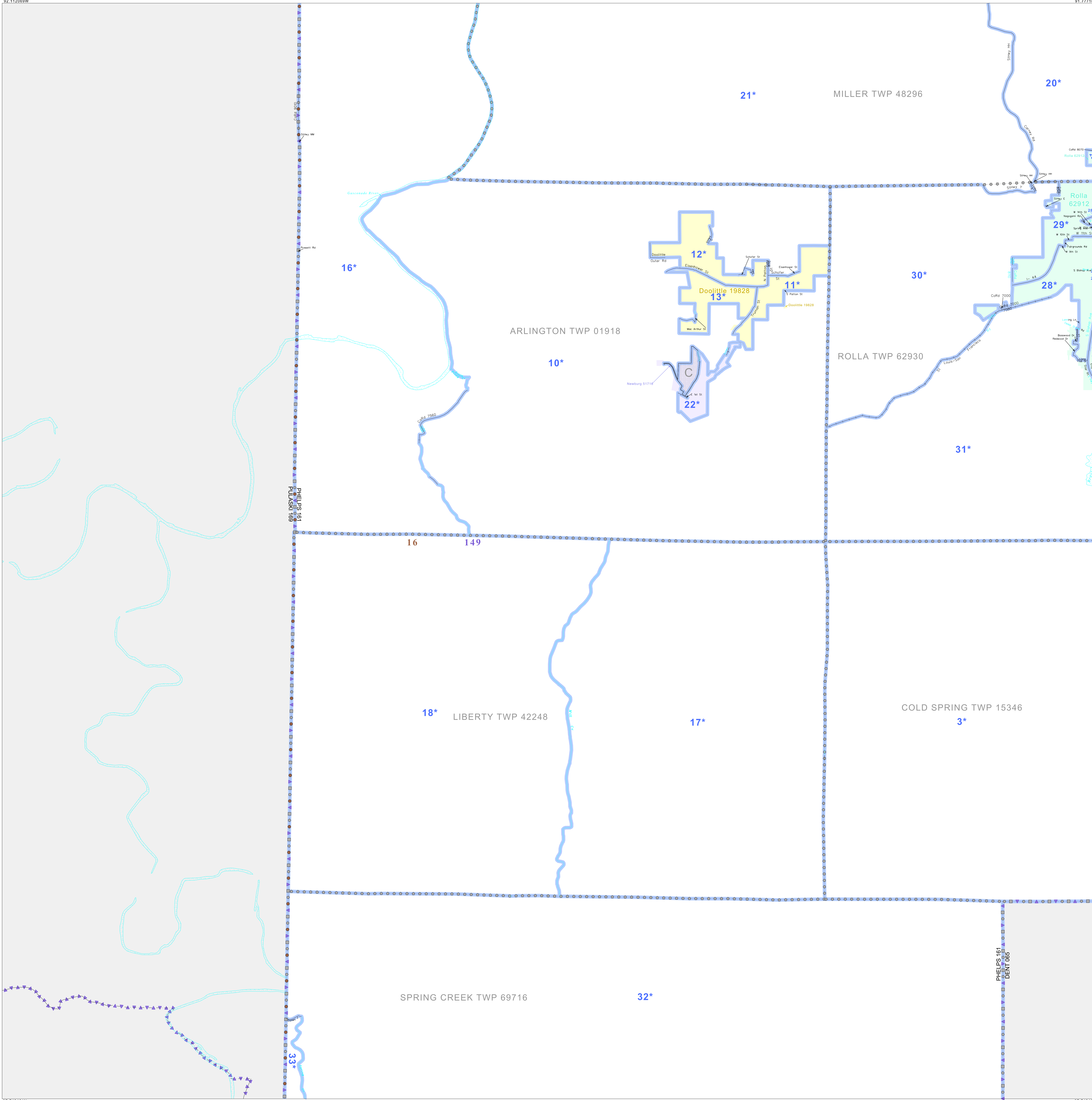
Abbreviation Reference: AIR = American Indian Reservation; SDAISA = State Designated American Indian Statistical Area

¹ A * * * following a place name indicates that the place is consecutive with a MCD. A * * * indicates that the place is also a false MCD. In both cases, the MCD name is shown only when it differs from the place name.

² A * * * following a VTD code indicates an actual voting district. Its absence indicates that the VTD is a pseudo voting district or no information is available as to its status.

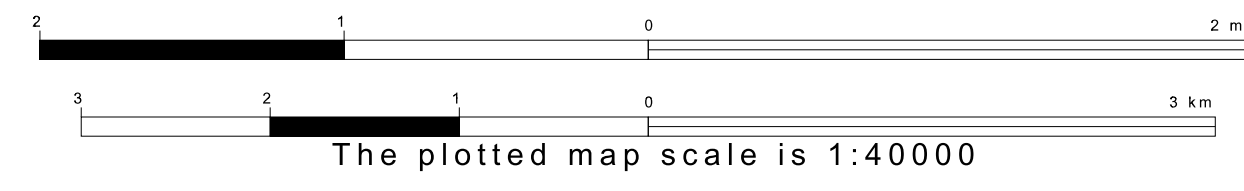
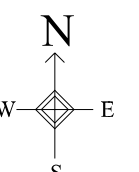
Voting Districts

Code	Name
3*	ColdSpringsWest Voting District
16*	DooLittleOutside Voting District
11*	DooLittleWest
12*	DooLittleWest2
13*	DooLittleWest3
15*	Jerome Voting District
17*	LibertyEast Voting District
18*	LibertyWest Voting District
20*	MillerEast Voting District
21*	MillerWest Voting District
22*	NewburgNo. 1 Voting District
23*	RollaNo. 4 Voting District
24*	RollaNo. 3 Voting District
25*	RollaNo. 5 Voting District
28*	RollaNo. 2 Voting District
29*	RollaNo. 1 Voting District
31*	RollaNo. 6 Voting District
32*	SpringCreek S.E. Voting District
33*	SpringCreek S.W. Voting District

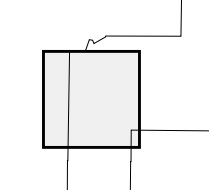


37 743461N
92 112669W

37 743461N
91 777182W



Sheet Location within County



Key to Adjacent Sheets

1	2
3	4
5	

ST: Missouri (29)
COU: Phelps (161)
SHEET 3 OF 5 PARENT SHEETS

