

39 448260N
90 885675W

39 448260N
90 885675W

GEOGRAPHIC AREAS LEGEND

| SYMBOL | NAME STYLE |
|---------|--------------------------------------|
| ***** | INTERNATIONAL |
| ////// | STATE |
| □□□□ | COUNTY |
| ○ ○ ○ ○ | MINOR CIVIL DIV. ¹ |
| ■ ■ ■ ■ | Incorporated Place ¹ |
| ■ ■ ■ ■ | Census Designated Place ² |
| — — — — | Voting District |
| ● ● ● ● | SLD-Senate |
| ▲ ▲ ▲ ▲ | SLD-House |
| □ □ □ □ | Minority |
| □ □ □ □ | Inset |
| □ □ □ □ | Out Area |

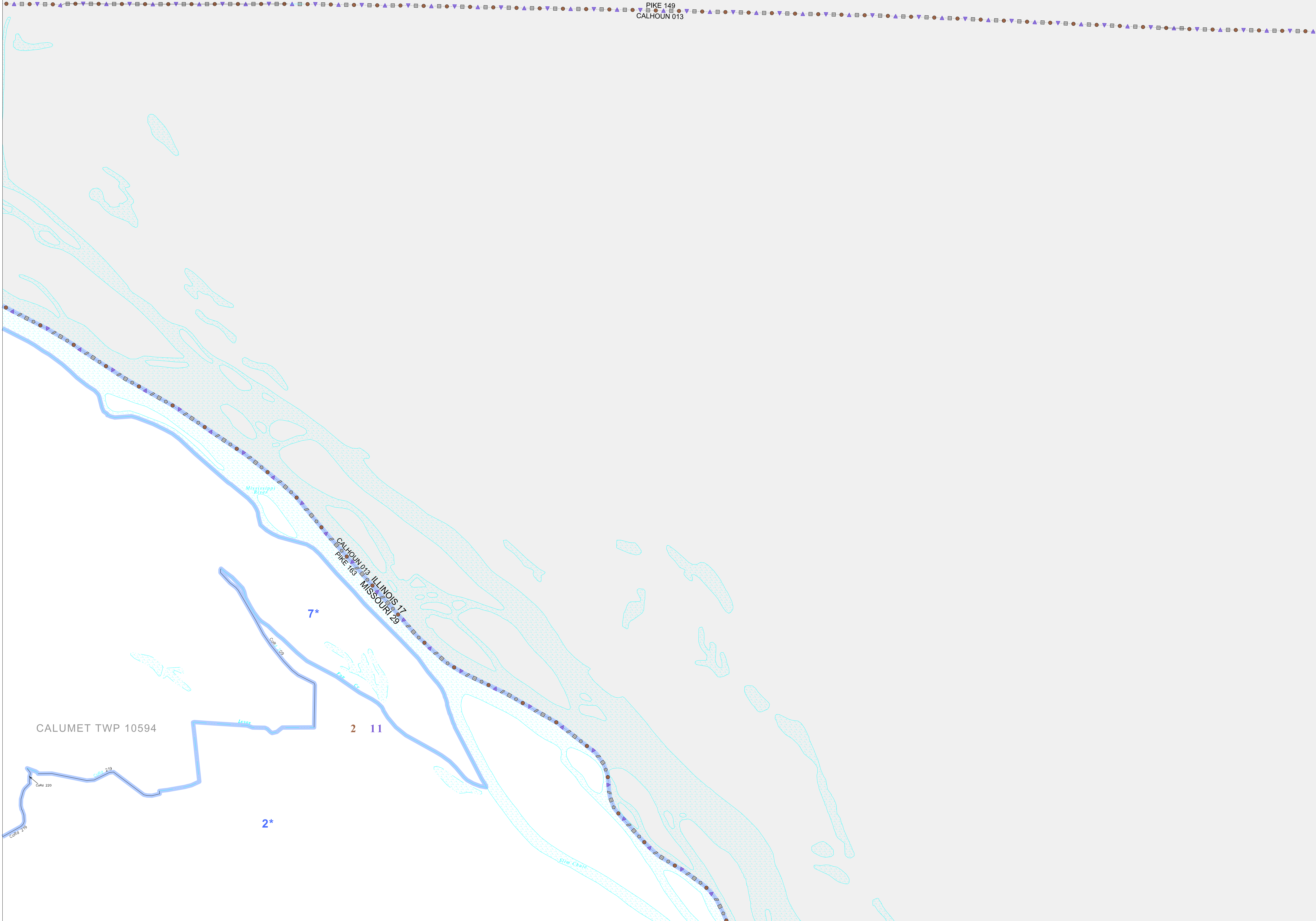
Abbreviation Reference: AIR - American Indian Reservation; SDAISA - State Designated American Indian Statistical Area

¹ A "*" following a place name indicates that the place is coterminous with a MCD. A "-" indicates that the place is also a false MCD. In both cases, the MCD name is shown only when it differs from the place name.

² A "*" following a VTD code indicates an actual voting district. Its absence indicates that the VTD is a pseudo voting district or no information is available as to its status.

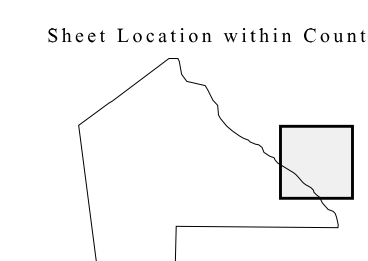
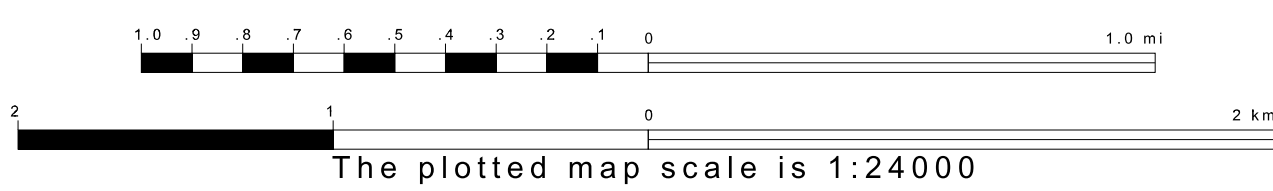
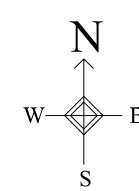
Voting Districts

| Code | Name |
|------|----------------------------|
| 7* | Anada Voting District |
| 7* | Clarkville Voting District |



39 289224N
90 885675W

39 289224N
90 885675W



Key to Adjacent Sheets

| | |
|----|----|
| 3 | |
| 6 | 7 |
| 10 | 11 |

ST: Missouri (29)
COU: Pike (163)
SHEET 7 OF 11 PARENT SHEETS