

39 286024N
91 501095W

39 286024N
91 299955W

GEOGRAPHIC AREAS LEGEND

SYMBOL	NAME STYLE
*****	INTERNATIONAL
//////	STATE
□□□□□□	COUNTY
○ ○ ○ ○ ○	MINOR CIVIL DIV. ¹
■ ■ ■ ■ ■	Incorporated Place ¹
■ ■ ■ ■ ■	Census Designated Place ²
—	Voting District
● ● ● ● ●	SLD-Senate
▲ ▲ ▲ ▲ ▲	SLD-House
□ □ □ □ □	Minority
□ □ □ □ □	Inset
□ □ □ □ □	Out Area

Abbreviation Reference: AIR - American Indian Reservation; SDAISA - State Designated American Indian Statistical Area

¹ A " " following a place name indicates that the place is coterminous with a MCD. A " " indicates that the place is also a MCD. In both cases, the MCD name is shown only when it differs from the place name.

² A " " following a VTD code indicates an actual voting district. Its absence indicates that the VTD is a pseudo voting district or no information is available as to its status.

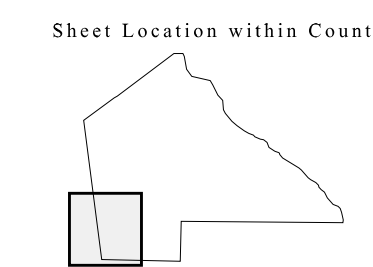
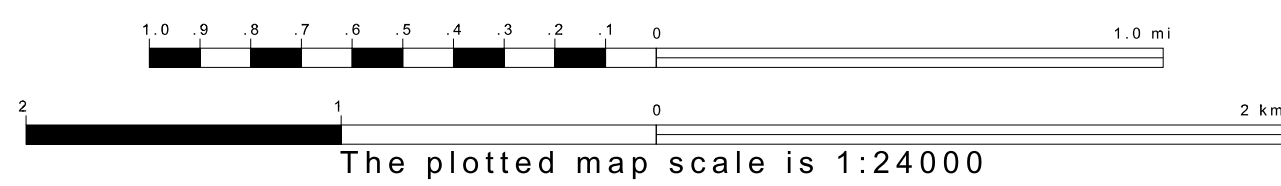
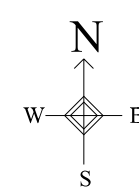
Voting Districts

Code	Name
15*	NewHarmony Voting District
16*	NewHartford Voting District



39 129789N
91 501095W

39 129789N
91 299955W



Key to Adjacent Sheets

4	5
8	9

ST: Missouri (29)
COU: Pike (163)
SHEET 8 OF 11 PARENT SHEETS

