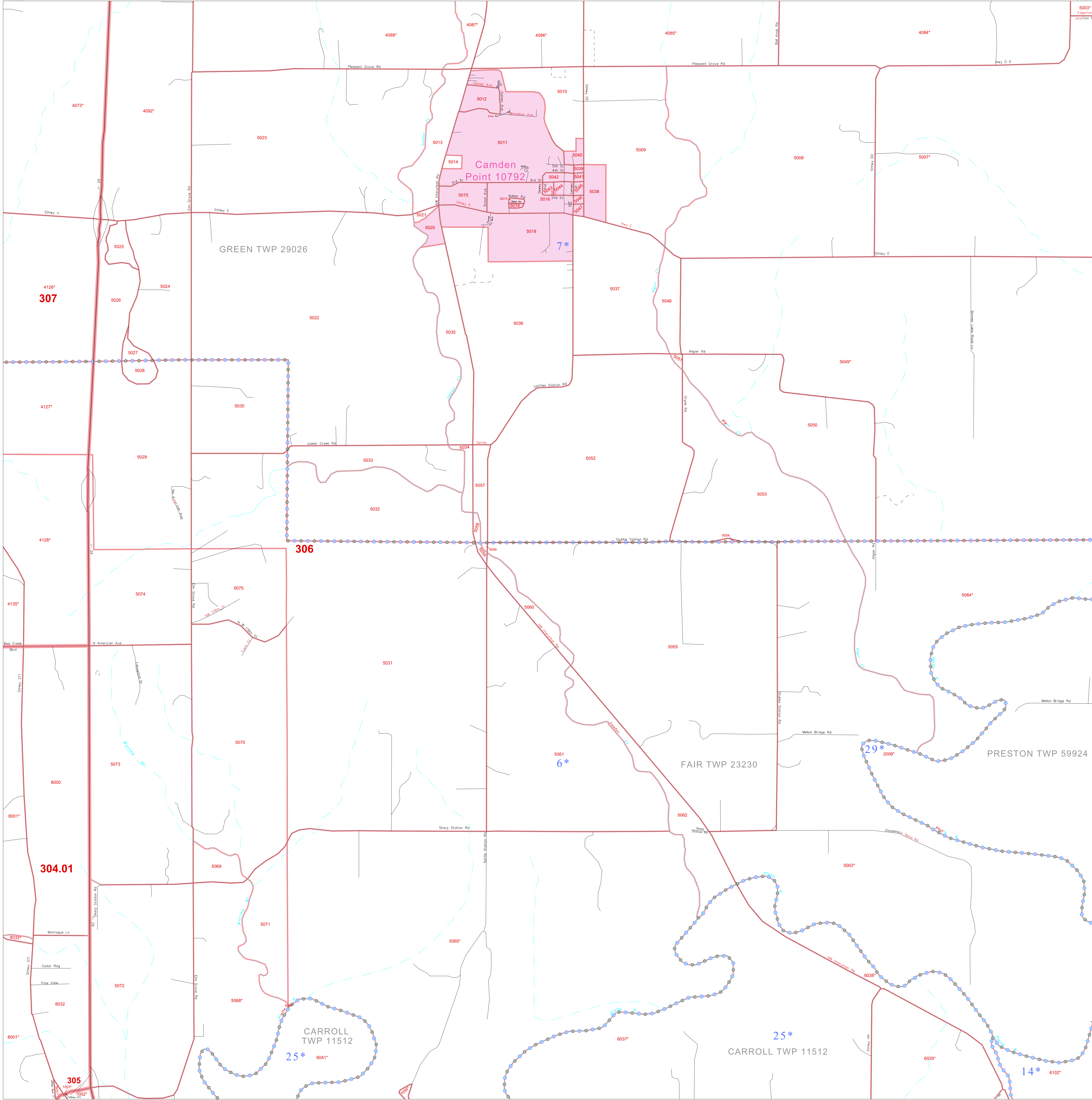


P. L. 94-171 COUNTY BLOCK MAP (CENSUS 2000)

39 467629N
94 799208W

39 467629N
94 891433W



GEOGRAPHIC AREAS LEGEND

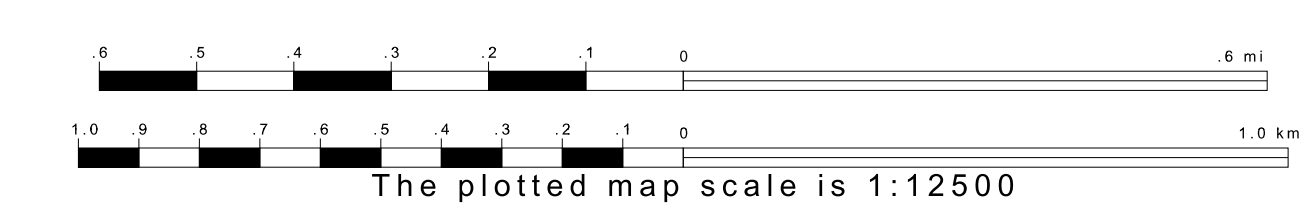
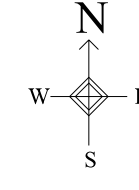
SYMBOL	NAME STYLE
☆☆☆☆	INTERNATIONAL
////	STATE
□□□□	COUNTY
○	MINOR CIVIL DIV ¹
Yellow/Pink	Incorporated Place ¹
Yellow/Pink	Census Designated Place ¹
.....	Corporate Offset Boundary
.....	Voting District ²
Red Solid	Census Tract
Red Dashed	BLOCK ³

Military Inset Out Area

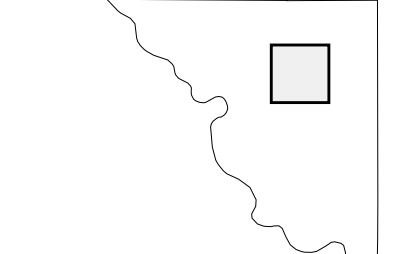
¹ A "*" following a place name indicates that the place is coterminous with a MCD. A "-" indicates that the place is also a false MCD. In both cases, the MCD name is shown only when it differs from the place name.
² A "*" following a VTD code indicates an actual voting district. Its absence indicates that the VTD is a pseudo voting district or no information is available as to its status.
³ A "-" following a block number indicates that the block number is repeated elsewhere in the block.

39 384693N
94 799208W

39 384693N
94 891433W



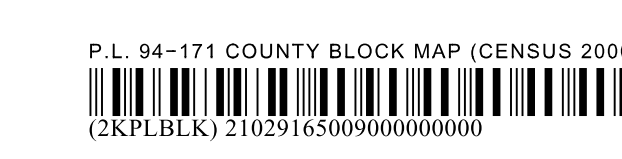
Sheet Location within County



Key to Adjacent Sheets

3	4	5
8	9	10
12	13	14

ST: Missouri (29)
 COU: Platte (165)
 SHEET 9 OF 20 PARENT SHEETS



All legal boundaries and names are as of January 1, 2000. The boundaries shown on this map are for Census Bureau statistical data collection and tabulation purposes only; their depiction and designation for statistical purposes does not constitute a determination of jurisdictional authority or rights of ownership or entitlement. U.S. DEPARTMENT OF COMMERCE Economics and Statistics Administration U.S. Census Bureau