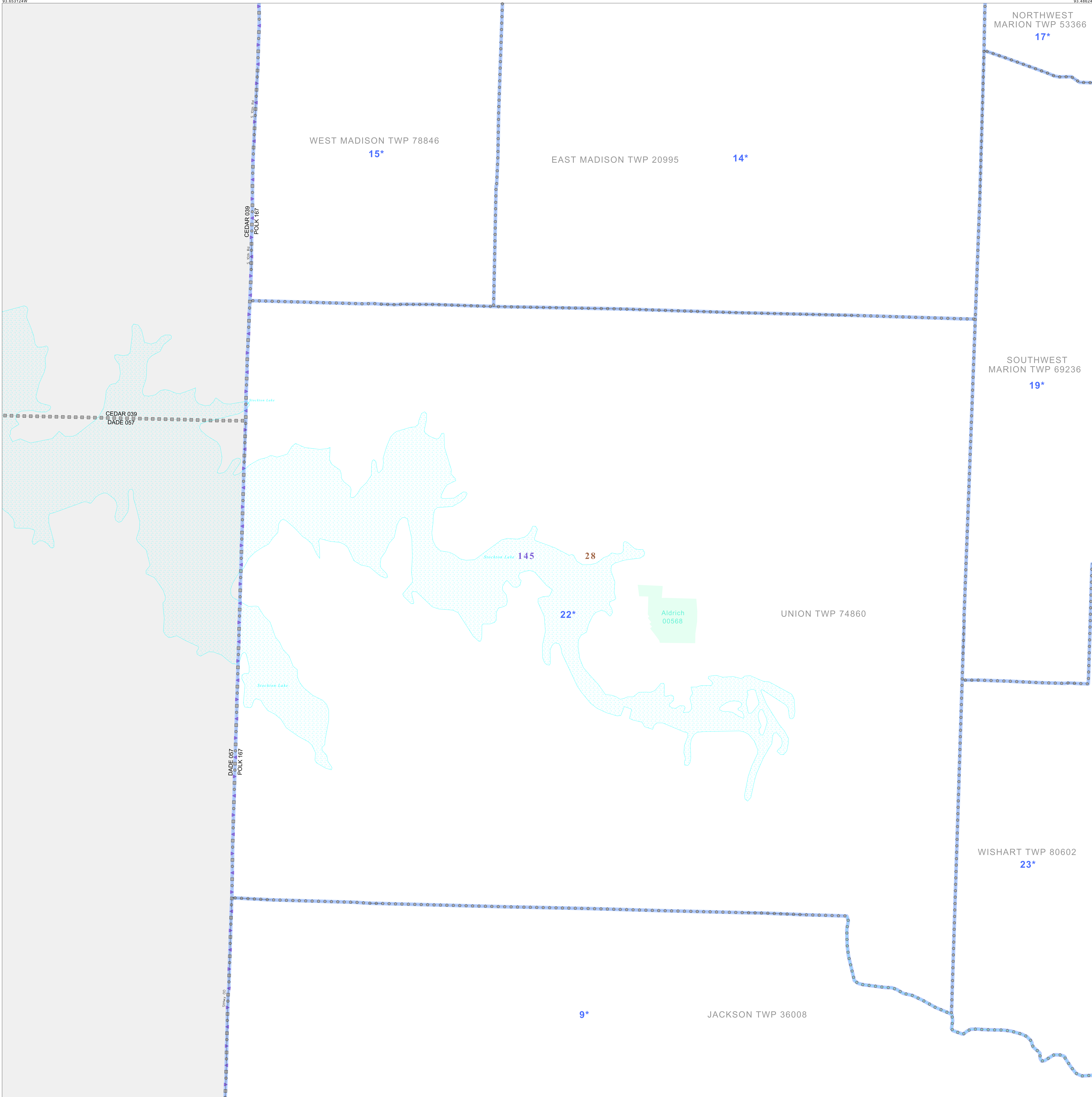


P.L. 94-171 VOTING DISTRICT/STATE LEGISLATIVE DISTRICT OUTLINE MAP (CENSUS 2000)

37 423354N  
93 853124W

37 423354N  
93 486249W



GEOGRAPHIC AREAS LEGEND

SYMBOL	NAME STYLE
*****	INTERNATIONAL STATE
#####	COUNTY
-----	MINOR CIVIL DIV <sup>1</sup>
■ ■ ■ ■ ■	Incorporated Place <sup>1</sup>
■ ■ ■ ■ ■	Census Designated Place <sup>2</sup>
— — — — —	Voting District
● ● ● ● ●	SLD-Senate
▲ ▲ ▲ ▲ ▲	SLD-House

Abbreviation Reference: AIR - American Indian Reservation; SDAISA - State Designated American Indian Statistical Area

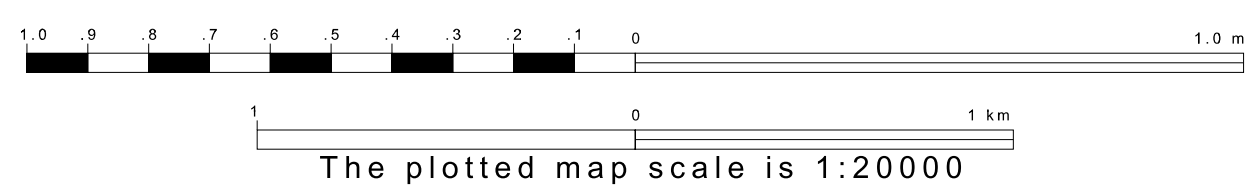
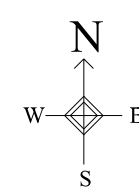
<sup>1</sup> A "\*" following a place name indicates that the place is coterminous with a MCD. A "-" indicates that the place is also a false MCD. In both cases, the MCD name is shown only when it differs from the place name.  
<sup>2</sup> A "\*" following a VTD code indicates an actual voting district. Its absence indicates that the VTD is a pseudo voting district or no information is available as to its status.

Voting Districts

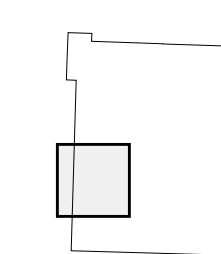
Code	Name
9*	Jackson Voting District
14*	MadisonEast Voting District
15*	MadisonWest Voting District
17*	MarionNorthwest Voting District
19*	MarionSouthwest Voting District
22*	Union Voting District
28*	Wishart Voting District

37 423354N  
93 853124W

37 490618N  
93 486249W



Sheet Location within County



Key to Adjacent Sheets

4	5
7	8
10	11

ST: Missouri (29)  
 COU: Polk (167)  
 SHEET 7 OF 12 PARENT SHEETS

