

P. L. 94-171 COUNTY BLOCK MAP (CENSUS 2000)

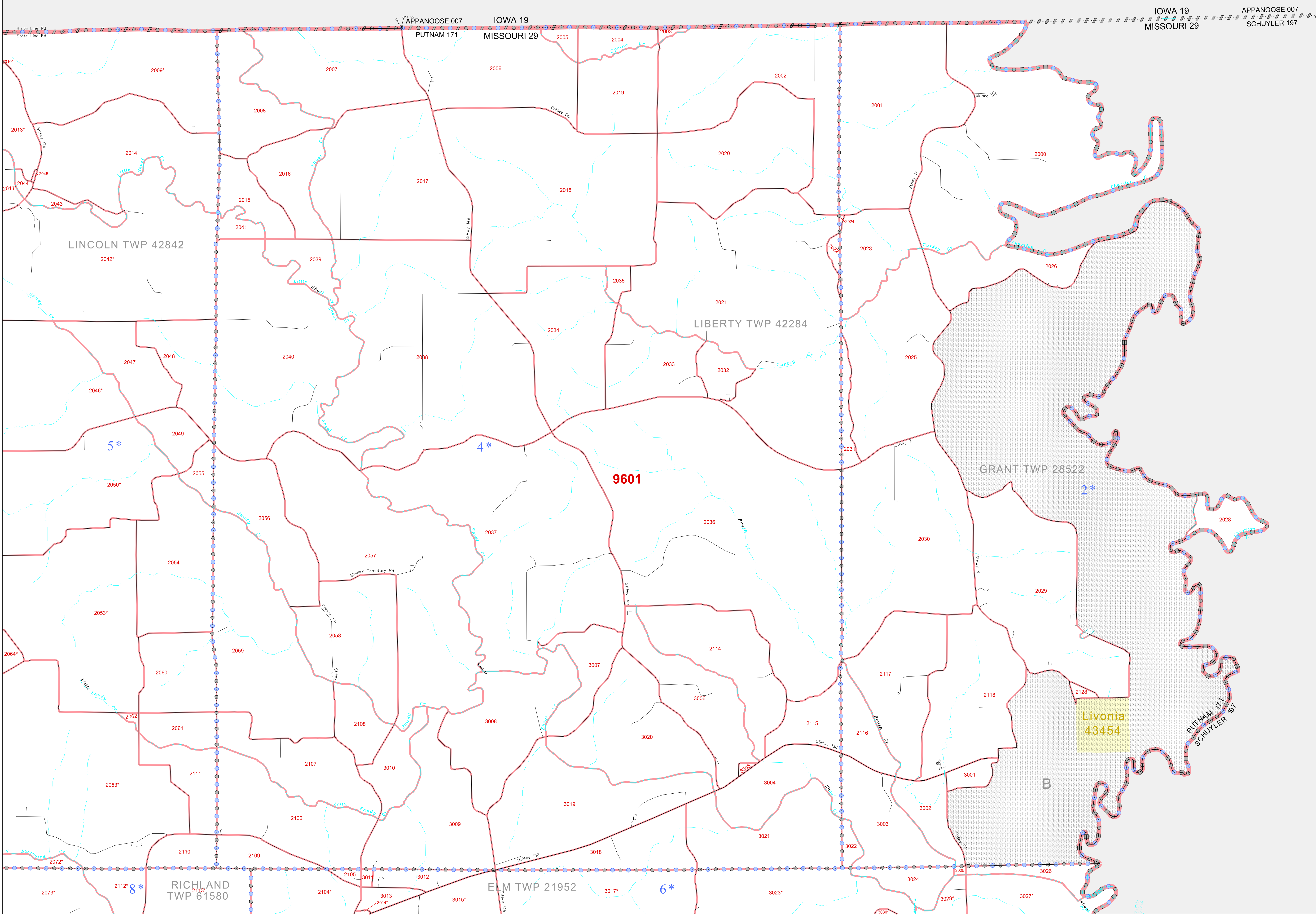
40 648305N
92 900397W

40 648305N
92 681599W

GEOGRAPHIC AREAS LEGEND

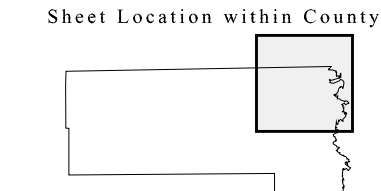
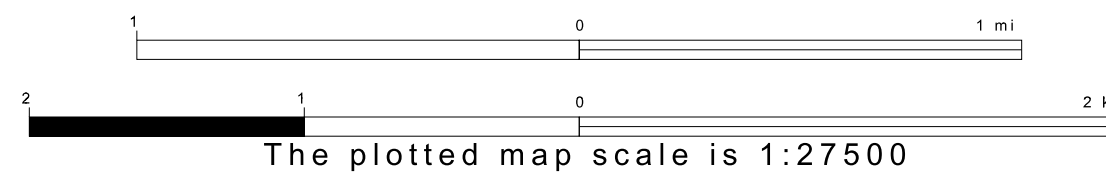
SYMBOL	NAME STYLE
*****	INTERNATIONAL
///////	STATE
■■■■■	COUNTY
□□□□□	MINOR CIVIL DIV ¹
■ ■ ■ ■ ■	Incorporated Place ²
■ ■ ■ ■ ■	Census Designated Place ²
.....	Corporate Offset Boundary
.....	Voting District ³
■■■■■	Census Tract
■■■■■	BLOCK ³
■ ■ ■ ■ ■	Military
Inset	Out Area

1 A "*" following a place name indicates that the place is coterminous with a MCD. A "-" indicates that the place is also a false MCD. In both cases, the MCD name is shown only when it differs from the place name.
 2 A "*" following a VTD code indicates an actual voting district. Its absence indicates that the VTD is a pseudo voting district or no information is available as to its status.
 3 A "*" following a block number indicates that the block number is repeated elsewhere in the block.



40 465833N
92 900397W

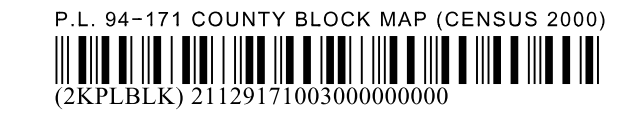
40 465833N
92 681599W



Key to Adjacent Sheets

2	3
5	6

ST: Missouri (29)
 COU: Putnam (171)
 SHEET 3 OF 6 PARENT SHEETS



All legal boundaries and names are as of January 1, 2000. The boundaries shown on this map are for Census Bureau statistical data collection and tabulation purposes only; their depiction and designation for statistical purposes does not constitute a determination of jurisdictional authority or rights of ownership or entitlement. U.S. DEPARTMENT OF COMMERCE Economics and Statistics Administration U.S. Census Bureau