

P. L. 94-171 COUNTY BLOCK MAP (CENSUS 2000)

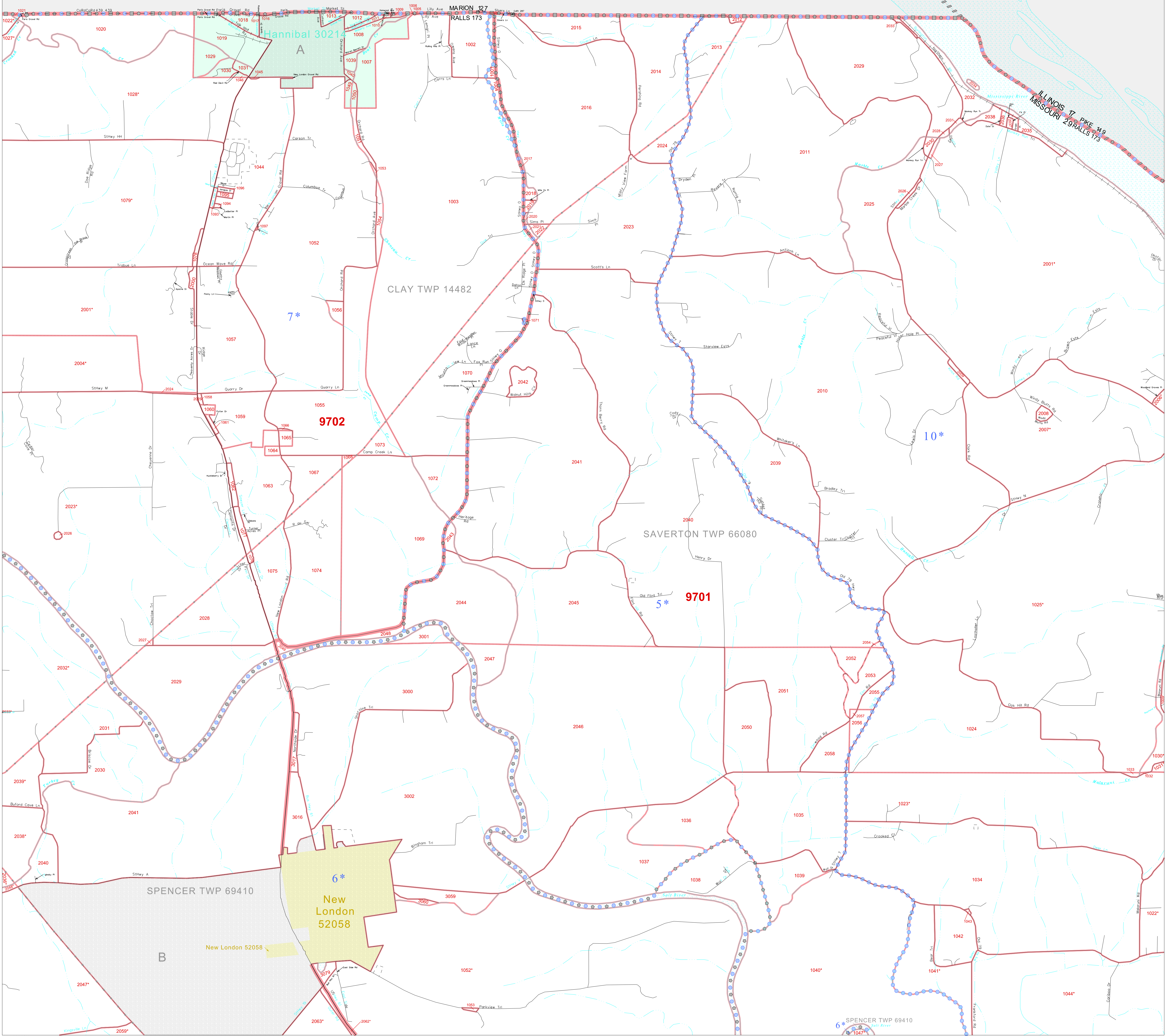
39 701603N
91.448239W

39 701603N
91.276961W

GEOGRAPHIC AREAS LEGEND

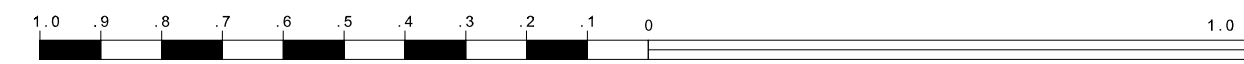
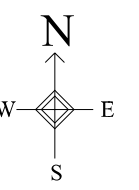
SYMBOL	NAME STYLE
*****	INTERNATIONAL
///////	STATE
■■■■■	COUNTY
■■■■■	MINOR CIVIL DIV ¹
■■■■■	Incorporated Place ²
■■■■■	Census Designated Place ²
.....	Corporate Offset Boundary
.....	Voting District ³
■■■■■	Census Tract
■■■■■	BLOCK ³

1 A "*" following a place name indicates that the place is coterminous with a MCD. "A*" indicates that the place is also a false MCD. In both cases, the MCD name is shown only when it differs from the place name.
 2 A "*" following a VTD code indicates an actual voting district. Its absence indicates that the VTD is a pseudo voting district or no information is available as to its status.
 3 A "*" following a block number indicates that the block number is repeated elsewhere in the block.



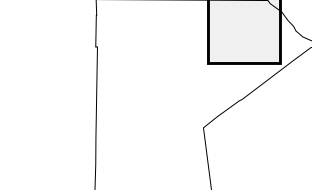
39 566910N
91.448239W

39 566910N
91.276961W



The plotted map scale is 1:20000

Sheet Location within County



Key to Adjacent Sheets

2	3	4
6	7	8

ST: Missouri (29)
 COU: Ralls (173)
 SHEET 3 OF 11 PARENT SHEETS

