

P.L. 94-171 VOTING DISTRICT/STATE LEGISLATIVE DISTRICT OUTLINE MAP (CENSUS 2000)

36 719092N
90 994961W

36 719092N
90 994961W

GEOGRAPHIC AREAS LEGEND

SYMBOL	NAME STYLE
*****	INTERNATIONAL
//////	STATE
□□□□	COUNTY
○	MINOR CIVIL DIV. ¹
■	Incorporated Place ¹
■	Census Designated Place ²
—	Voting District
●	SLD-Senate
▲	SLD-House

Military Inset Out Area

Abbreviation Reference: AIR - American Indian Reservation; SDAISA - State Designated American Indian Statistical Area

¹ A "*" following a place name indicates that the place is coterminous with a MCD. A "-" indicates that the place is also a false MCD. In both cases, the MCD name is shown only when it differs from the place name.

² A "*" following a VTD code indicates an actual voting district. Its absence indicates that the VTD is a pseudo voting district or no information is available as to its status.

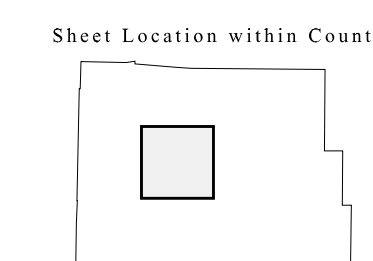
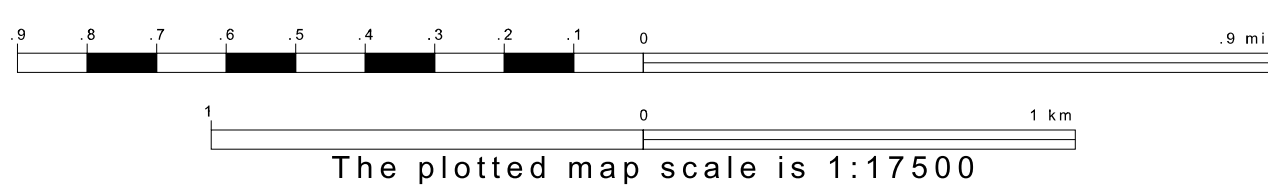
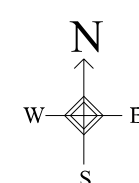
Voting Districts

Code	Name
2*	DoniphanFt Voting District
4*	DoniphanWest Voting District
8*	Jordan/JobessetP Voting District
11*	Shirley&Kelly Voting District



36 802928N
90 994961W

36 802928N
90 994961W



Key to Adjacent Sheets

1	2	3
5	6	7
9	10	11

ST: Missouri (29)
COU: Ripley (181)
SHEET 6 OF 12 PARENT SHEETS

