

P.L. 94-171 VOTING DISTRICT/STATE LEGISLATIVE DISTRICT OUTLINE MAP (CENSUS 2000)

39 170025N
93 581763W

39 170025N
93 581763W

GEOGRAPHIC AREAS LEGEND

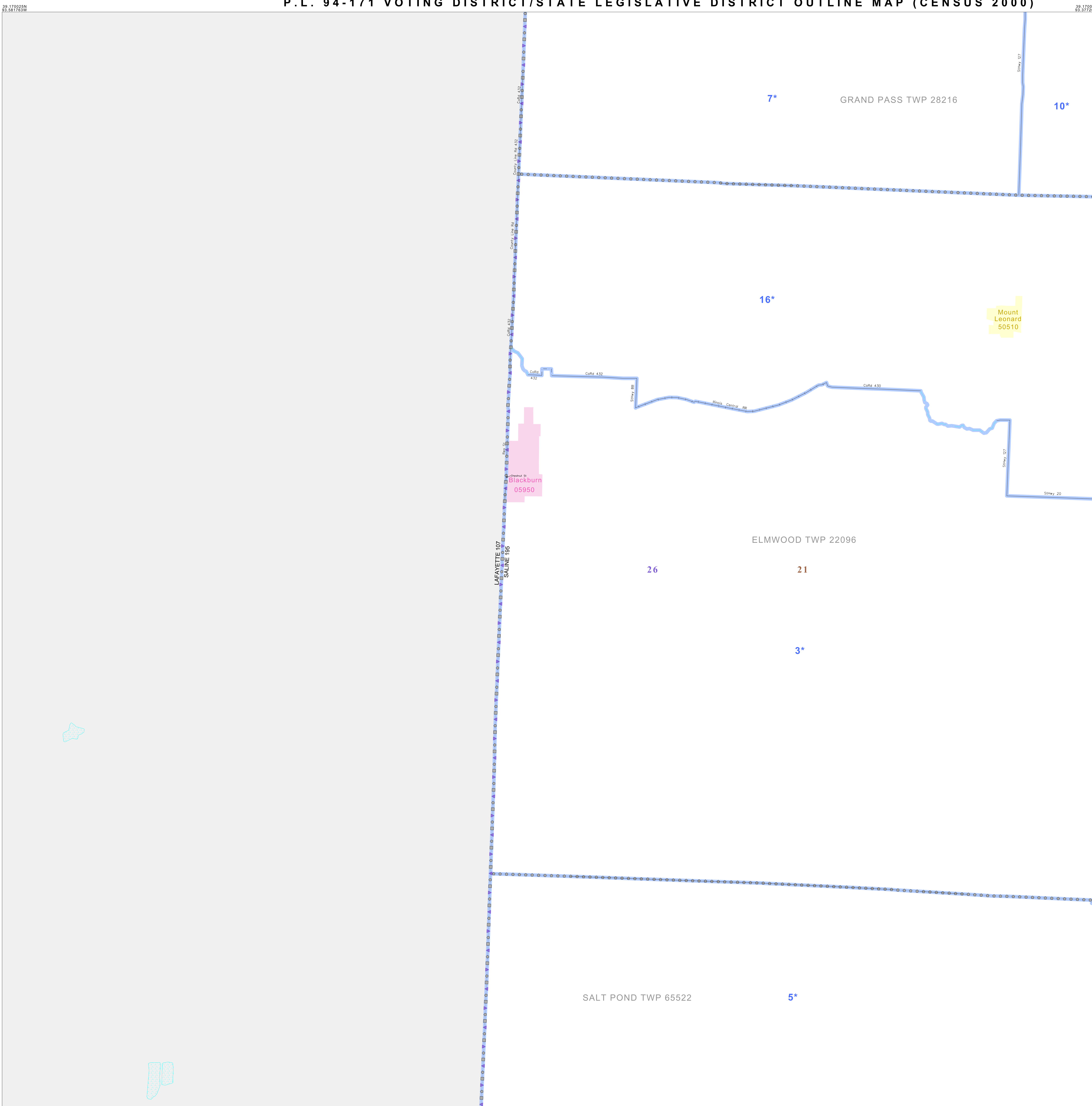
SYMBOL	NAME STYLE
*****	INTERNATIONAL
//////	STATE
□□□□□□	COUNTY
○ ○ ○ ○ ○ ○	MINOR CIVIL DIV ¹
■ ■ ■ ■ ■ ■	Incorporated Place ¹
■ ■ ■ ■ ■ ■	Census Designated Place ²
—	Voting District
● ● ● ● ● ●	SLD-Senate
▲ ▲ ▲ ▲ ▲ ▲	SLD-House

Abbreviation Reference: AIR - American Indian Reservation; SDAISA - State Designated American Indian Statistical Area

¹ A "*" following a place name indicates that the place is coterminous with a MCD. A "-" indicates that the place is also a false MCD. In both cases, the MCD name is shown only when it differs from the place name.
² A "*" following a VTD code indicates an actual voting district. Its absence indicates that the VTD is a pseudo voting district or no information is available as to its status.

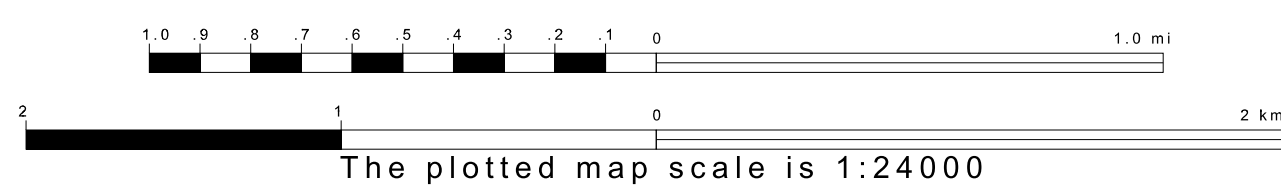
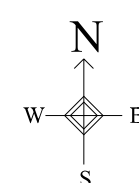
Voting Districts

Code	Name
3*	Blackburn Voting District
5*	Emma Voting District
7*	GrandPass Voting District
10*	WaltBead Voting District
16*	MLLeonard Voting District

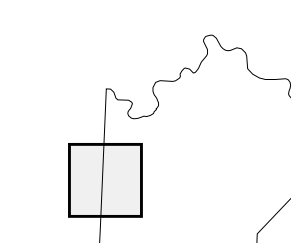


39 010784N
93 581763W

39 010784N
93 581763W



Sheet Location within County



Key to Adjacent Sheets

3	4
7	8
11	12

ST: Missouri (29)
 COU: Saline (195)
 SHEET 7 OF 13 PARENT SHEETS

