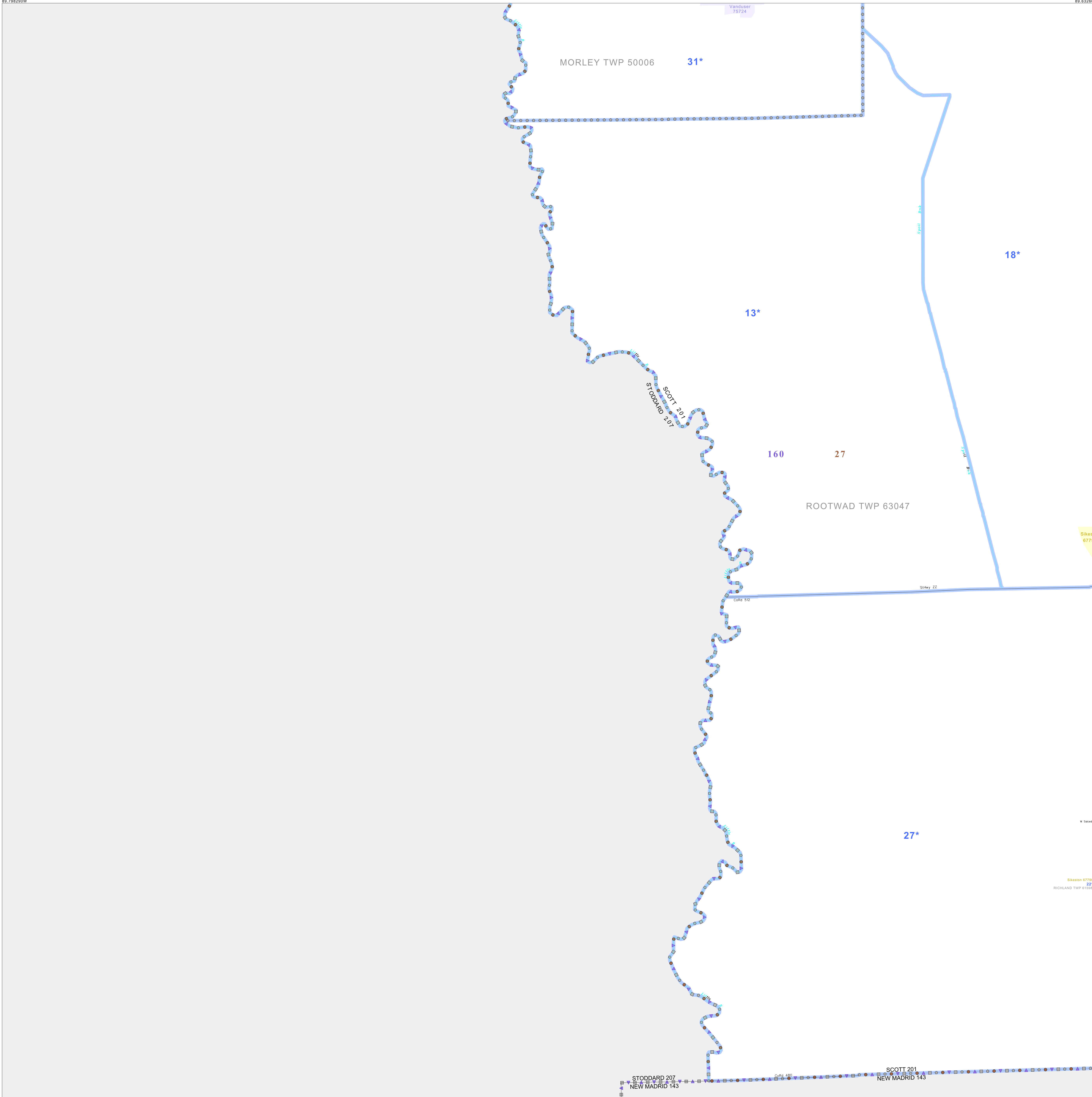


P.L. 94-171 VOTING DISTRICT/STATE LEGISLATIVE DISTRICT OUTLINE MAP (CENSUS 2000)

36 990000N
89 798290W

36 990000N
89 832860W



GEOGRAPHIC AREAS LEGEND

SYMBOL	NAME STYLE
*****	INTERNATIONAL
//////	STATE
□□□□	COUNTY
○	MINOR CIVIL DIV ¹
■	Incorporated Place ¹
■	Census Designated Place ¹
—	Voting District ²
●	SLD-Senate
▲	SLD-House

Abbreviation Reference: AIR - American Indian Reservation; SDAISA - State Designated American Indian Statistical Area

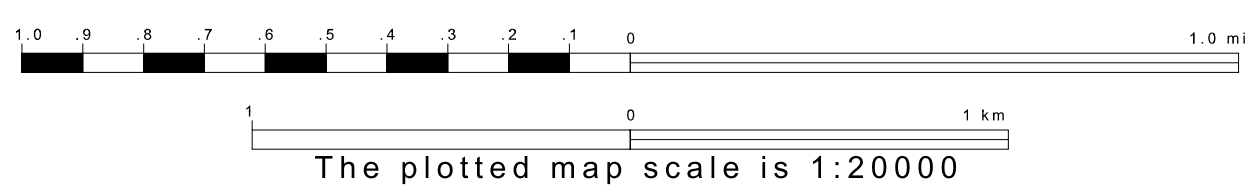
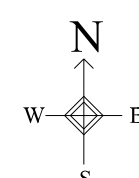
¹ A "*" following a place name indicates that the place is coterminous with a MCD. A "-" indicates that the place is also a false MCD. In both cases, the MCD name is shown only when it differs from the place name.
² A "*" following a VTD code indicates an actual voting district. Its absence indicates that the VTD is a pseudo voting district or no information is available as to its status.

Voting Districts

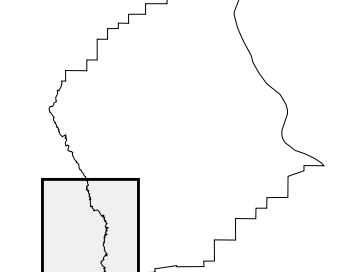
Code	Name
13*	Crowder Voting District
16*	McMillin Voting District
22*	Northwest Voting District
27*	Salcedo Voting District
31*	Vanduser Voting District

36 857260N
89 798290W

36 857260N
89 832860W



Sheet Location within County



Key to Adjacent Sheets

4	5
7	8

ST: Missouri (29)
 COU: Scott (201)
 SHEET 7 OF 9 PARENT SHEETS

