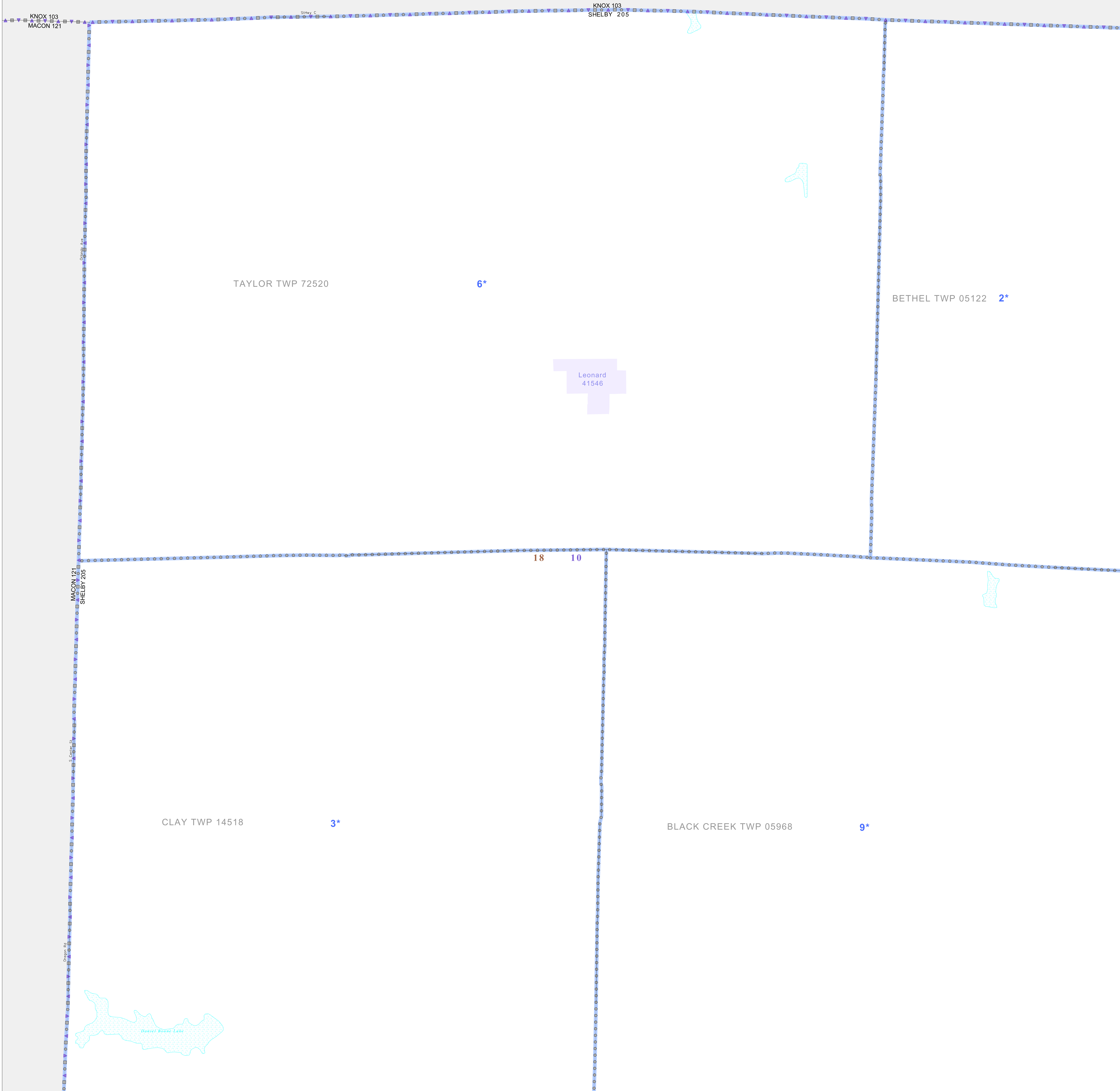


P.L. 94-171 VOTING DISTRICT/STATE LEGISLATIVE DISTRICT OUTLINE MAP (CENSUS 2000)

39 961733N  
92 308187W

39 961733N  
92 089740W



### GEOGRAPHIC AREAS LEGEND

SYMBOL	NAME STYLE
*****	INTERNATIONAL
//////	STATE
□□□□	COUNTY
○ ○ ○ ○	MINOR CIVIL DIV. <sup>1</sup>
■ ■ ■ ■	Incorporated Place <sup>1</sup>
■ ■ ■ ■	Census Designated Place <sup>2</sup>
— — — —	Voting District <sup>2</sup>
● ● ● ●	SLD-Senate
▲ ▲ ▲ ▲	SLD-House

Military  Inset  Out Area

Abbreviation Reference: AIR - American Indian Reservation; SDAISA - State Designated American Indian Statistical Area

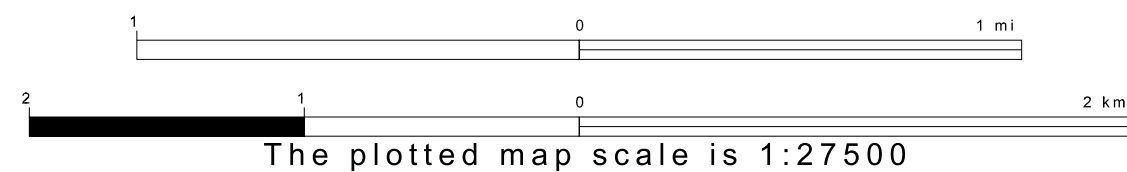
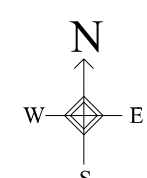
<sup>1</sup> A " " following a place name indicates that the place is coterminous with a MCD. A " " indicates that the place is also a CDP. In both cases, the MCD name is shown only when it differs from the place name.  
<sup>2</sup> A " " following a VTD code indicates an actual voting district. Its absence indicates that the VTD is a pseudo voting district or no information is available as to its status.

### Voting Districts

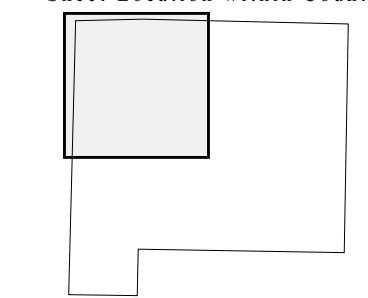
Code	Name
2*	Bethel/Burksville Voting District
3*	Clay/Hines Church Voting District
6*	Leonard Voting District
9*	Shelbyville Voting District

39 779289N  
92 308187W

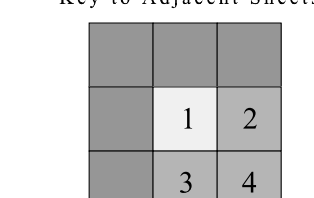
39 779289N  
92 089740W



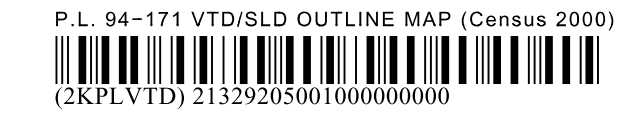
Sheet Location within County



Key to Adjacent Sheets



ST: Missouri (29)  
COU: Shelby (205)  
SHEET 1 OF 4 PARENT SHEETS



All legal boundaries and names are as of January 1, 2000. The boundaries shown on this map are for Census Bureau statistical data collection and tabulation purposes only; their depiction and designation for statistical purposes does not constitute a determination of jurisdictional authority or rights of ownership or entitlement. U.S. DEPARTMENT OF COMMERCE Economics and Statistics Administration U.S. Census Bureau