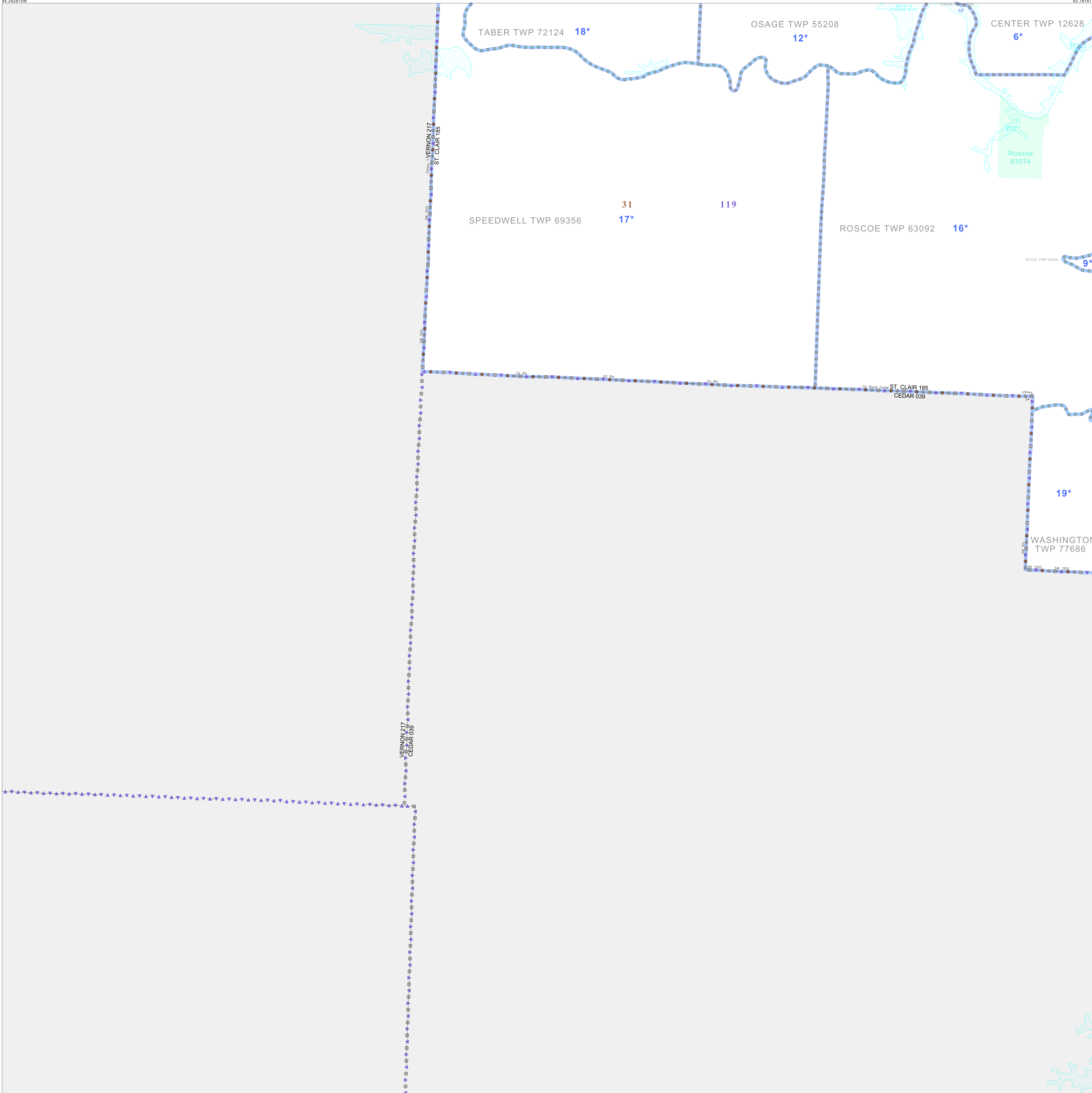


P.L. 94-171 VOTING DISTRICT/STATE LEGISLATIVE DISTRICT OUTLINE MAP (CENSUS 2000)

38 024133N
94 242870W

38 024133N
93 781477W



GEOGRAPHIC AREAS LEGEND

SYMBOL	NAME STYLE
*****	INTERNATIONAL
=====	STATE
=====	COUNTY
-----	MINOR CIVIL DIV. ¹
■ ■ ■ ■ ■	Incorporated Place ¹
■ ■ ■ ■ ■	Census Designated Place ²
-----	Voting District
● ● ● ● ●	SLD-Senate
▲ ▲ ▲ ▲ ▲	SLD-House
.....	Minority
Inset	Inset
Out Area	Out Area

Abbreviation Reference: AIR - American Indian Reservation; SDAISA - State Designated American Indian Statistical Area

¹ A "*" following a place name indicates that the place is coterminous with a MCD. A "-" indicates that the place is also a MCD. In both cases, the MCD name is shown only when it differs from the place name.

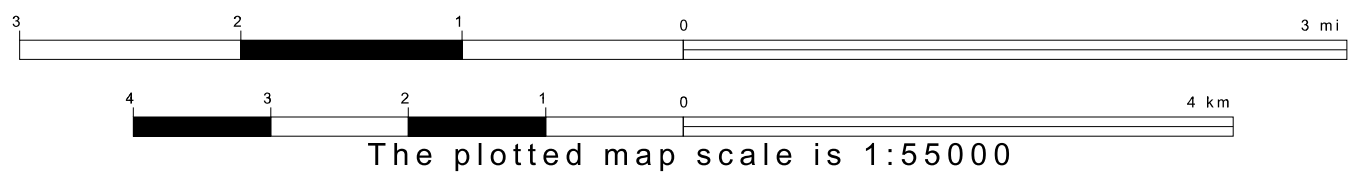
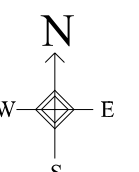
² A "*" following a VTD code indicates an actual voting district. Its absence indicates that the VTD is a pseudo voting district or no information is available as to its status.

Voting Districts

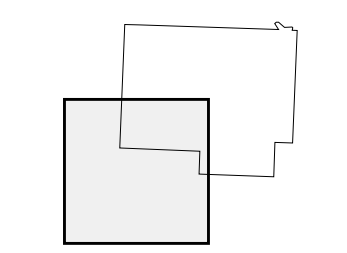
Code	Name
6*	Center Voting District
9*	Doyal Voting District
12*	Osage Voting District
16*	Roscoe Voting District
17*	Speedwell Voting District
18*	Taber Voting District
19*	Washington Voting District

37 559134N
94 242870W

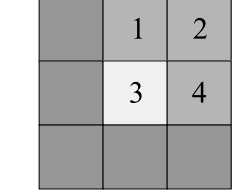
37 559134N
93 781477W



Sheet Location within County



Key to Adjacent Sheets



ST: Missouri (29)
COU: St. Clair (185)
SHEET 3 OF 4 PARENT SHEETS

