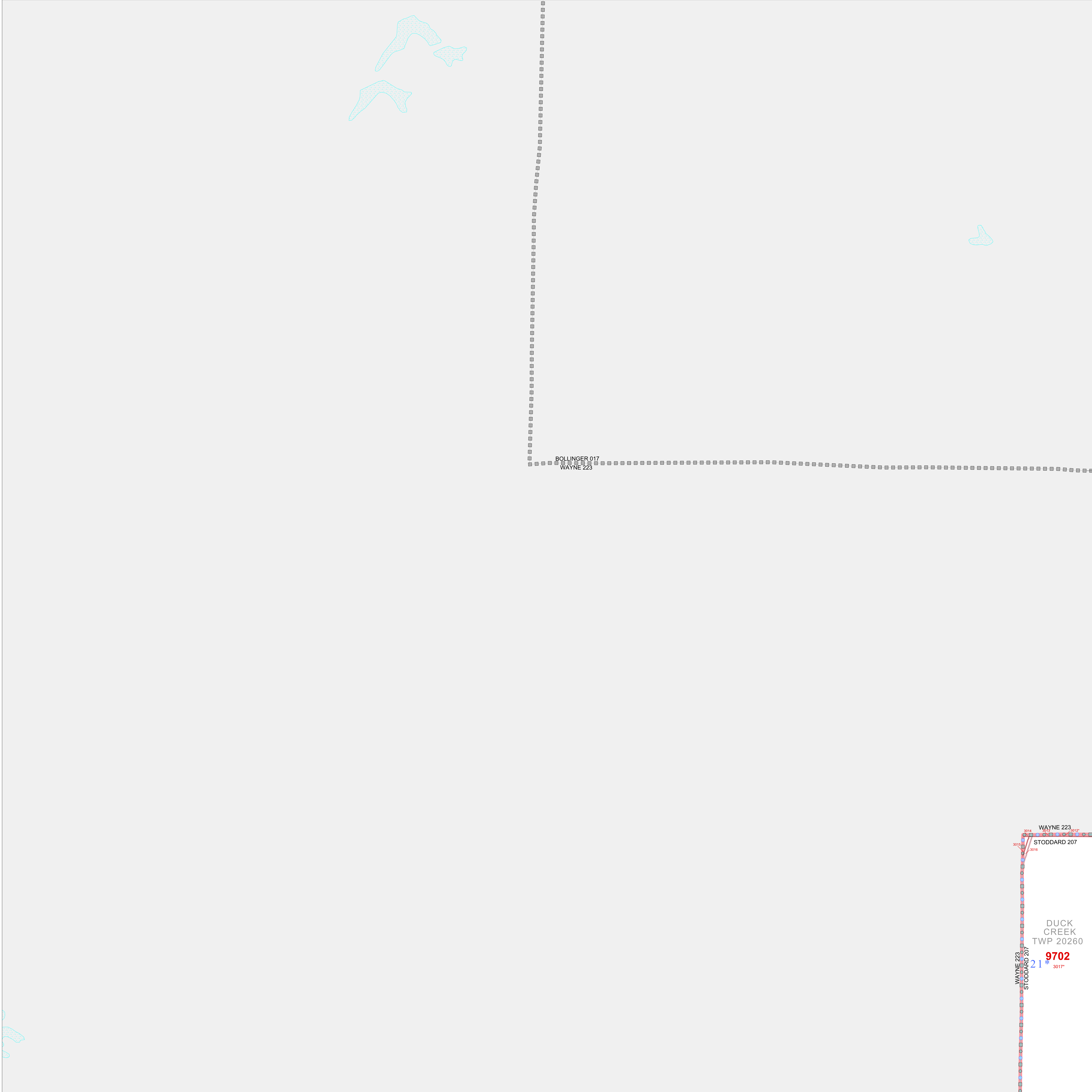


P.L. 94-171 COUNTY BLOCK MAP (CENSUS 2000)

37 142811N
90 303059W

37 142811N
90 137821W



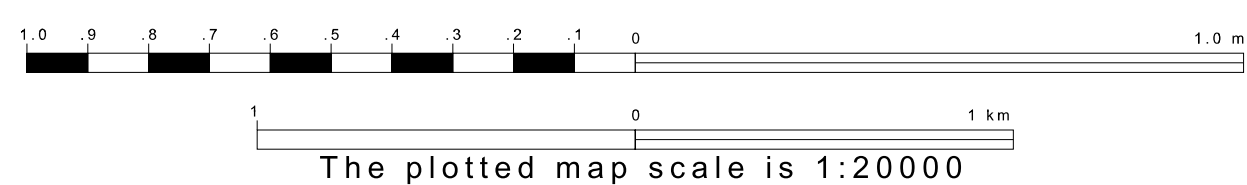
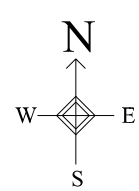
GEOGRAPHIC AREAS LEGEND

SYMBOL	NAME STYLE
*****	INTERNATIONAL
//////	STATE
■■■■■	COUNTY
●●●●●	MINOR CIVIL DIV ¹
■ ■ ■ ■ ■	Incorporated Place ¹
■ ■ ■ ■ ■	Census Designated Place ¹
-----	Corporate Offset Boundary
●●●●●	Voting District ²
■■■■■	Census Tract
■■■■■	BLOCK ³
■ ■ ■ ■ ■	Military
Inset	Inset
Out Area	Out Area

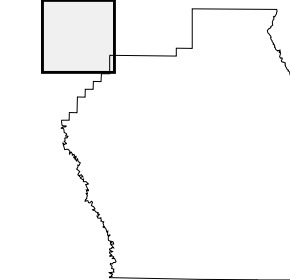
1 A "*" following a place name indicates that the place is coterminous with a MCD. A "-" indicates that the place is also a false MCD. In both cases, the MCD name is shown only when it differs from the place name.
 2 A "*" following a VTD code indicates an actual voting district. Its absence indicates that the VTD is a pseudo voting district or no information is available as to its status.
 3 A "*" following a block number indicates that the block number is repeated elsewhere in the block.

37 010058N
90 303059W

37 010058N
90 137821W



Sheet Location within County



Key to Adjacent Sheets

	1	2
5		6

ST: Missouri (29)
 COU: Stoddard (207)
 SHEET 1 OF 16 PARENT SHEETS

