

36 877304N
90 303059W

36 877304N
90 303059W

GEOGRAPHIC AREAS LEGEND

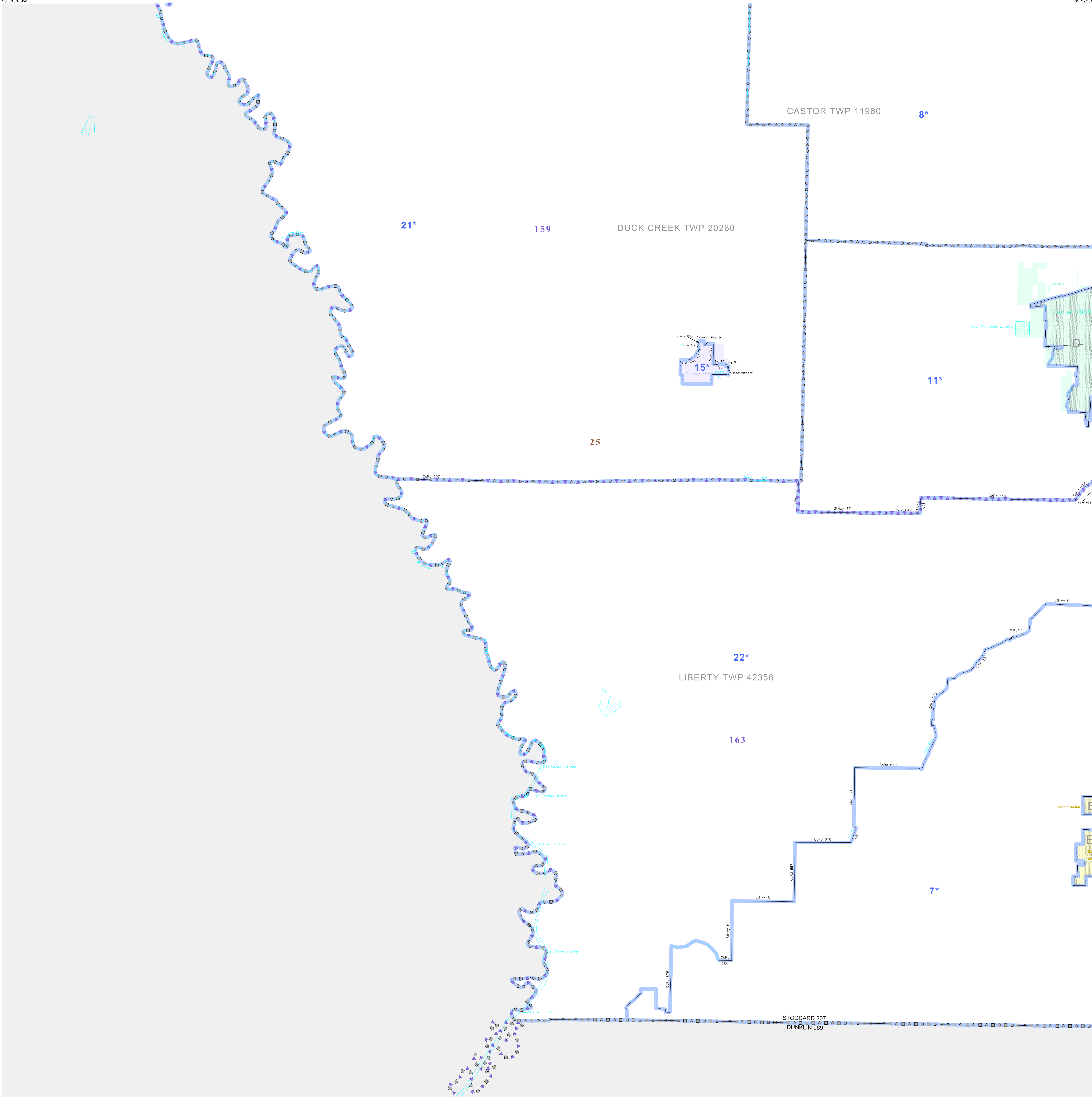
SYMBOL	NAME STYLE
*****	INTERNATIONAL
//////	STATE
□□□□□□	COUNTY
○	MINOR CIVIL DIV ¹
■	Incorporated Place ¹
■	Census Designated Place ²
—	Voting District
●●●●●	SLD-Senate
▲▲▲▲▲	SLD-House
⋮	Boundary
Inset	Inset
Out Area	Out Area

Abbreviation Reference: AIR - American Indian Reservation; SDAISA - State Designated American Indian Statistical Area

¹ A "*" following a place name indicates that the place is coterminous with a MCD. A "-" indicates that the place is also a false MCD. In both cases, the MCD name is shown only when it differs from the place name.
² A "*" following a VTD code indicates an actual voting district. Its absence indicates that the VTD is a pseudo voting district or no information is available as to its status.

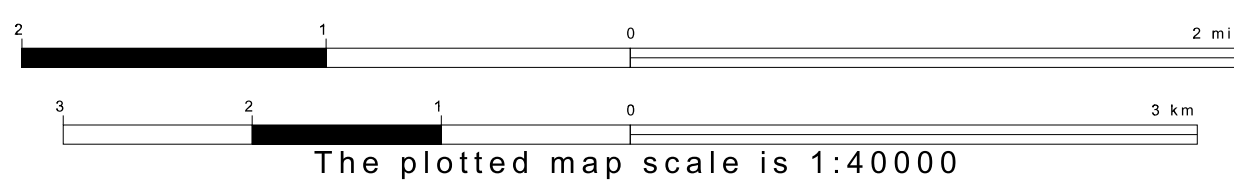
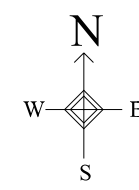
Voting Districts

Code	Name
7*	Bemis Rural Voting District
8*	Bloomfield Rural Voting District
11*	Dexter Rural Voting District
15*	Dudley Voting District
21*	Proctor Rural Voting District
22*	Pyle Voting District

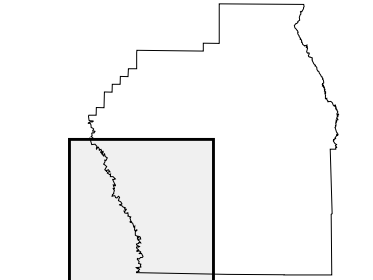


36 811790N
90 303059W

36 811790N
90 303059W



Sheet Location within County



Key to Adjacent Sheets

1	2
3	4

ST: Missouri (29)
 COU: Stoddard (207)
 SHEET 3 OF 4 PARENT SHEETS

