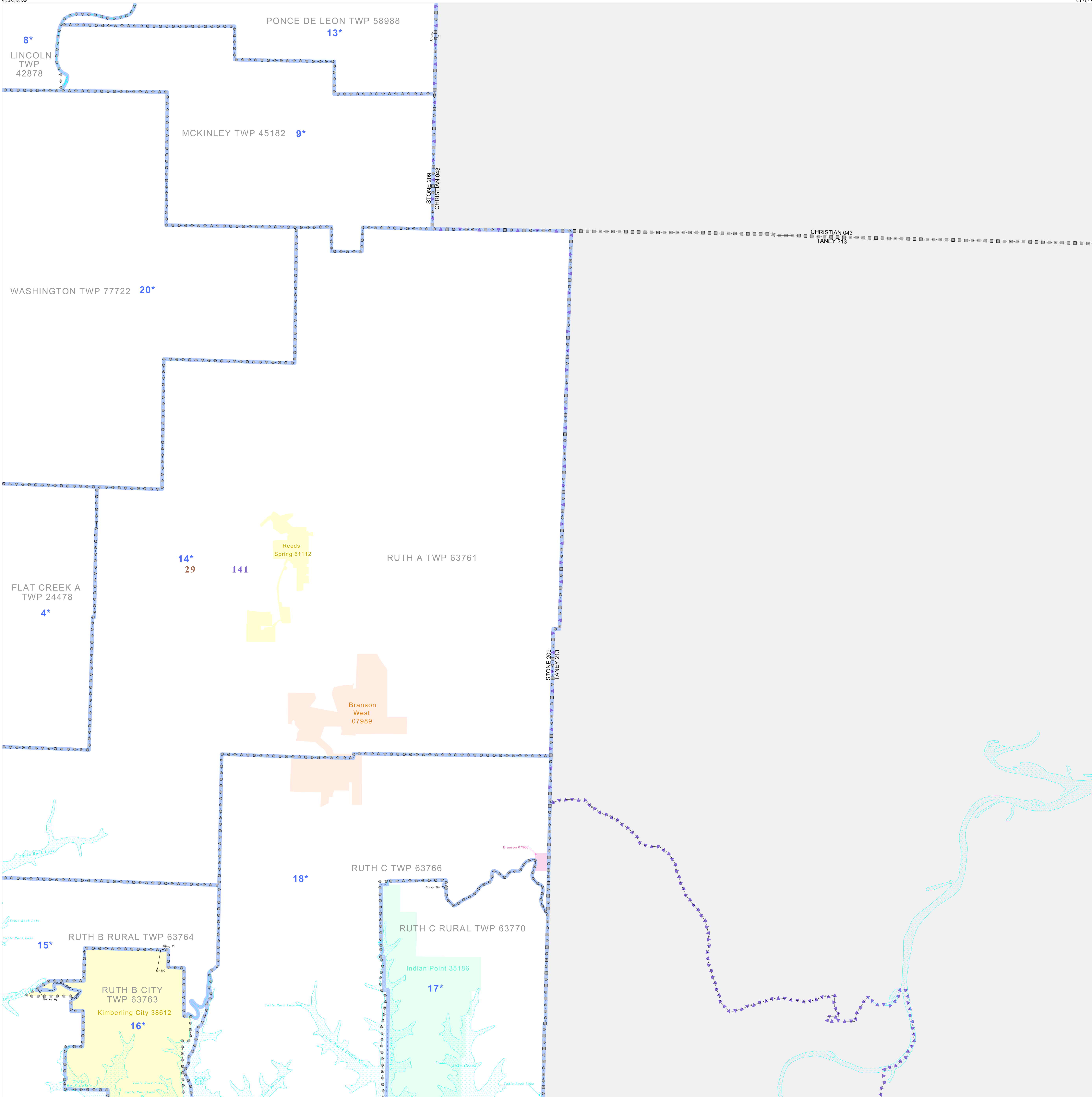


P.L. 94-171 VOTING DISTRICT/STATE LEGISLATIVE DISTRICT OUTLINE MAP (CENSUS 2000)

38.86854N
93.45862W

38.86854N
93.16170W



GEOGRAPHIC AREAS LEGEND

SYMBOL	NAME STYLE
*****	INTERNATIONAL
//////	STATE
□□□□□□	COUNTY
○ ○ ○ ○ ○ ○	MINOR CIVIL DIV. ¹
■ ■ ■ ■ ■ ■	Incorporated Place ¹
■ ■ ■ ■ ■ ■	Census Designated Place ²
— — — — —	Voting District
● ● ● ● ● ●	SLD-Senate
▲ ▲ ▲ ▲ ▲ ▲	SLD-House
□ □ □ □ □ □	Minority
□ □ □ □ □ □	Inset
□ □ □ □ □ □	Out Area

Abbreviation Reference: AIR - American Indian Reservation; SDAISA - State Designated American Indian Statistical Area

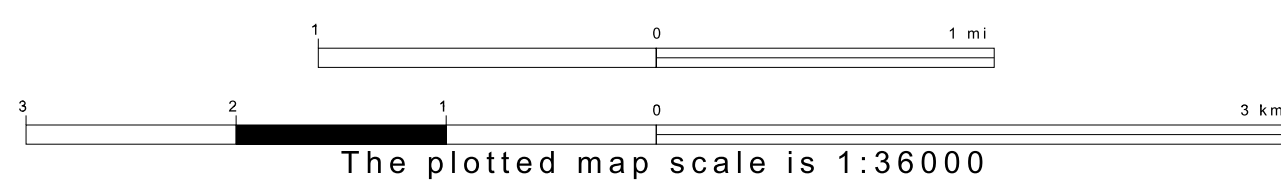
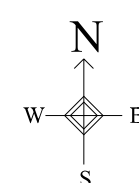
¹ A "*" following a place name indicates that the place is coterminous with a MCD. A "-" indicates that the place is also a false MCD. In both cases, the MCD name is shown only when it differs from the place name.
² A "*" following a VTD code indicates an actual voting district. Its absence indicates that the VTD is a pseudo voting district or no information is available as to its status.

Voting Districts

Code	Name
4*	FlatCreekA Voting District
8*	Lincoln Voting District
9*	Mckinley Voting District
13*	PonceDeLeon Voting District
14*	RuthRuralA2
15*	RuthRural Voting District
16*	RuthRuralA2
17*	RuthRural Voting District
18*	RuthWardsA2
20*	Washington Voting District

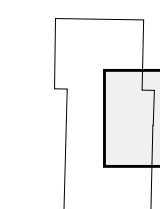
38.827603N
93.45862W

38.827603N
93.16170W



Sheet Location within County

Key to Adjacent Sheets



1	2
3	4
5	6

ST: Missouri (29)
 COU: Stone (209)
 SHEET 4 OF 6 PARENT SHEETS

